



**DANEHURST**  
— ESTATE AGENTS —

**Seaward Avenue, Southbourne**

**Guide Price £350,000 - £375,000**











**\*\* Guide Price £350,000 - £375,000 \*\***

This charming two-bedroom ground-floor garden flat offers a fantastic blend of location and lifestyle, ideally positioned between Southbourne Grove where you'll find a range of independent shops, cafes, and restaurants. The award-winning sandy beach with its promenade is just a moments walk away.

The property has been well-maintained and updated over the ownership of the current owners. It boasts a spacious reception room that opens directly onto the rear garden, a generously sized master bedroom, and a modern kitchen/breakfast room complete with integrated appliances with direct access to the garden.

Key features include a long lease, ownership of both front and rear gardens, and the convenience of off-road parking at the front. Additionally, there is side access that provides easy access to the rear garden, which is landscaped with a lawn, mature shrubs, and a patio area ideal for outdoor relaxation.

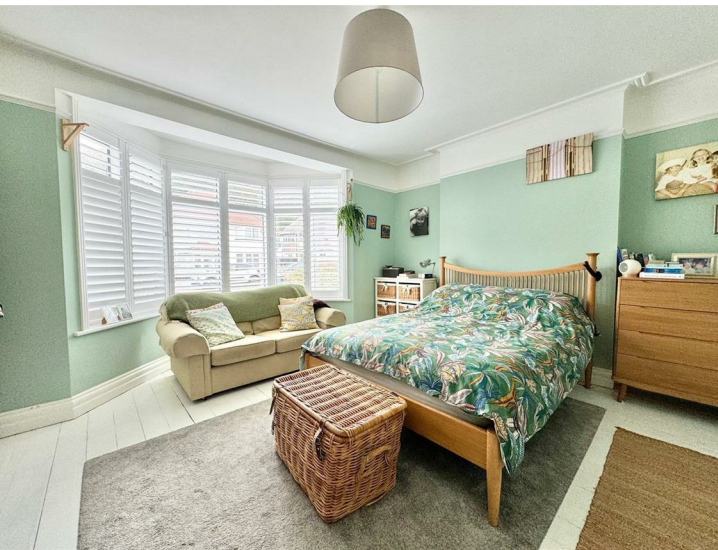
Lease: Approximately 122 years remaining.

Ground Rent: Peppercorn

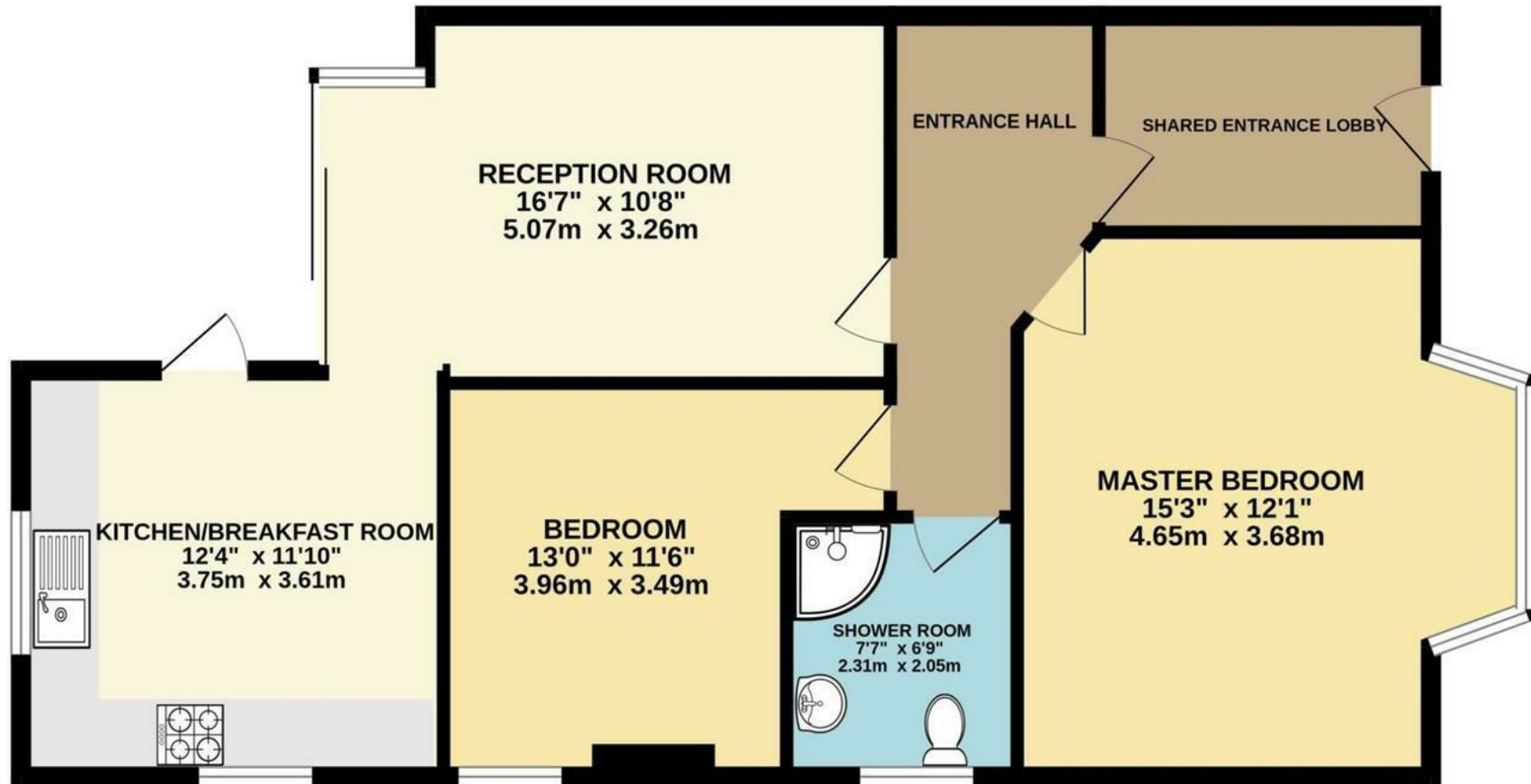
Service Charge: As and when required

Tenure: Leasehold

Council Tax Band: C



**GROUND FLOOR**  
833 sq.ft. (77.4 sq.m.) approx.

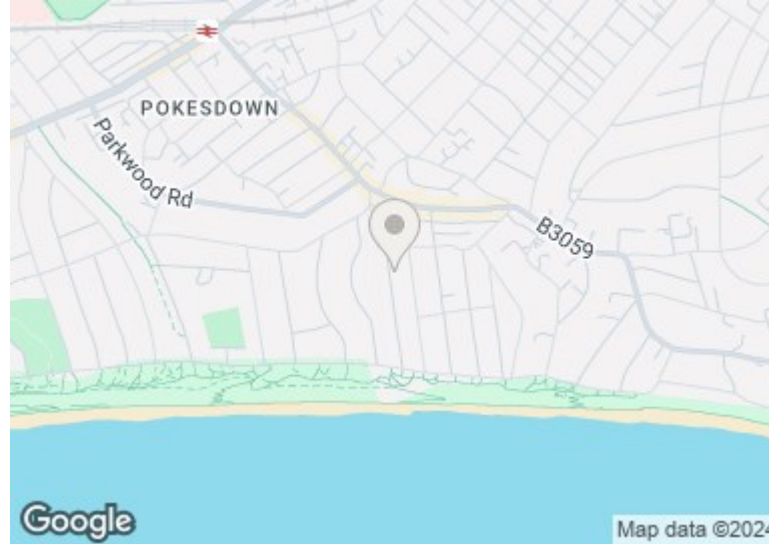


TOTAL FLOOR AREA : 833 sq.ft. (77.4 sq.m.) approx.

Whilst every attempt has been made to ensure the accuracy of the floorplan contained here, measurements of doors, windows, rooms and any other items are approximate and no responsibility is taken for any error, omission or mis-statement. This plan is for illustrative purposes only and should be used as such by any prospective purchaser. The services, systems and appliances shown have not been tested and no guarantee as to their operability or efficiency can be given.

Made with Metropix ©2023





**Viewing arrangements by appointment**

**01202 289000**

**[info@danehurstea.co.uk](mailto:info@danehurstea.co.uk)**

**[www.danehurstea.co.uk](http://www.danehurstea.co.uk)**



Interested parties should satisfy themselves, by inspection or otherwise as to the accuracy of the description given and any floor plans shown in these property details. All measurements, distances and areas listed are approximate. Fixtures, fittings and other items are NOT included unless specified in these details. Please note that any services, heating systems, or appliances have not been tested and no warranty can be given or implied as to their working order.