

DANEHURST

— ESTATE AGENTS —



BRAEMAR AVENUE, HENGISTBURY HEAD, BH6 4JF

Guide Price £900,000 - £950,000



**** Guide Price £900,000 - £950,000 ****

Nestled in the sought-after coastal area of Hengistbury Head, this exceptional 2,032 sq ft chalet bungalow is a Californian-inspired luxury home that beautifully blends modern bohemian aesthetics with a relaxed, timeless natural feel. From the moment you step inside, you're greeted by light-filled, open-plan living spaces that combine comfort and style.

The expansive living and dining area, with 6m sliding doors, seamlessly connects to the beautifully landscaped garden. Featuring warm woods, organic textiles, and artisanal elements, the space offers a perfect mix of modern refinement and a laid-back atmosphere. The designer kitchen, with minimalist cabinetry and natural materials, enhances the home's inviting yet sophisticated look.

The bedrooms are designed to be peaceful retreats, with soft neutral tones and a thoughtful use of textures. The upstairs master suite is a standout feature, offering a separate dressing room, and a luxurious en-suite bathroom with marble finishes, a walk-in shower, and a freestanding tub. A cosy window seat with garden views completes this serene space.

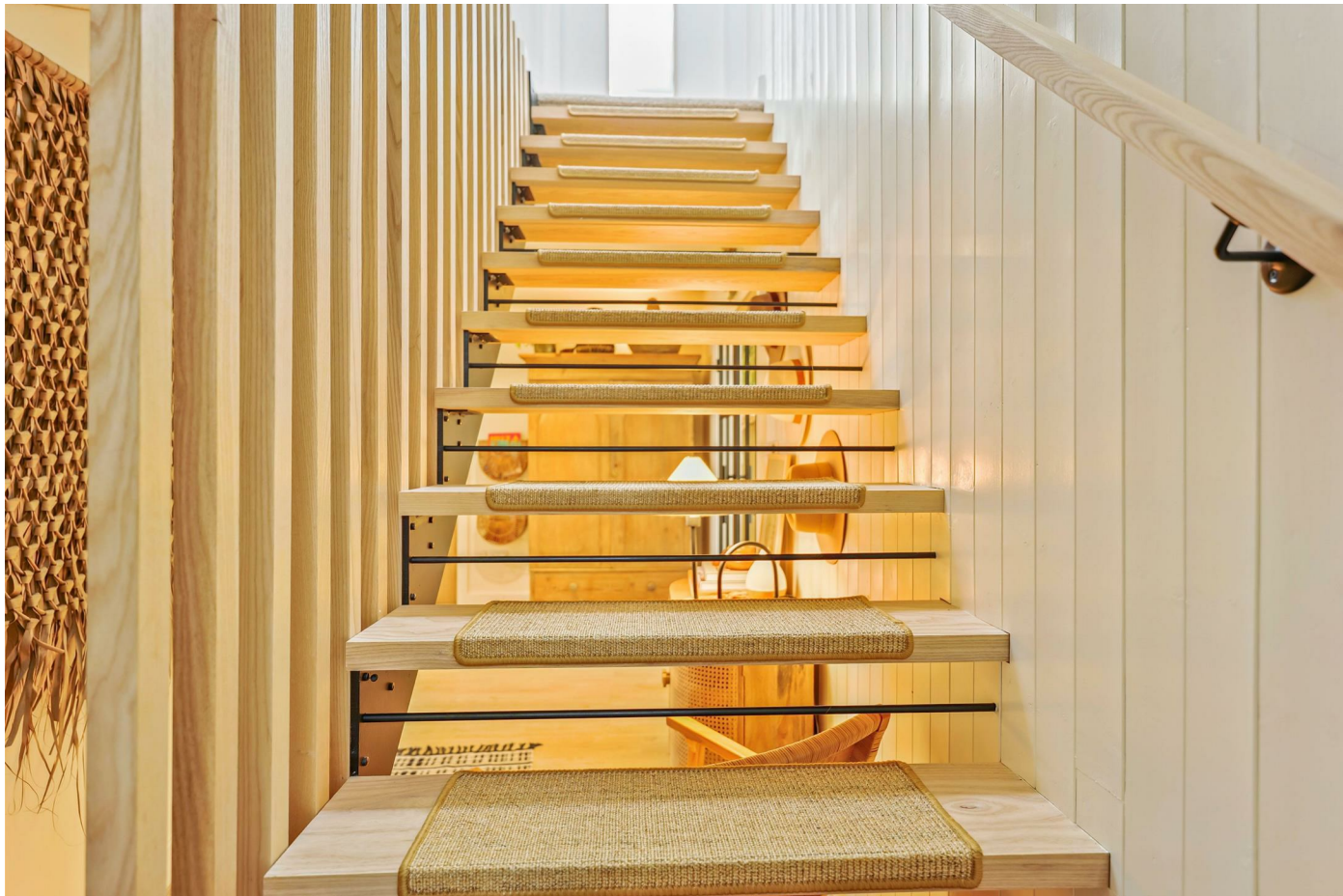
Outside, the spacious garden offers a haven of tranquillity, with raised planters, a large deck, and an outdoor shower, perfect after a day at the nearby beach. The space is ideal for al fresco dining and entertaining, extending the casual yet stylish feel of the home.

Located just moments from the beach, coastal paths, and local amenities, this beautiful property captures the essence of relaxed luxury living in one of the areas most desirable locations.



- Stunning 4 Bedroom Detached Chalet Style Bungalow
- Open-Plan Kitchen Living Dining Room
- Californian Inspired luxury Modern Home
- Principle Bedroom Suite on First Floor
- En-Suite & Walk-In Dressing Room
- Delightful South West Facing Garden
- Only 600m From Beaches And Coastal Paths
- Outdoor Shower Perfect For After A Day At The Nearby Beach
- Annex Potential
- Council Tax Band D Epc Rating C





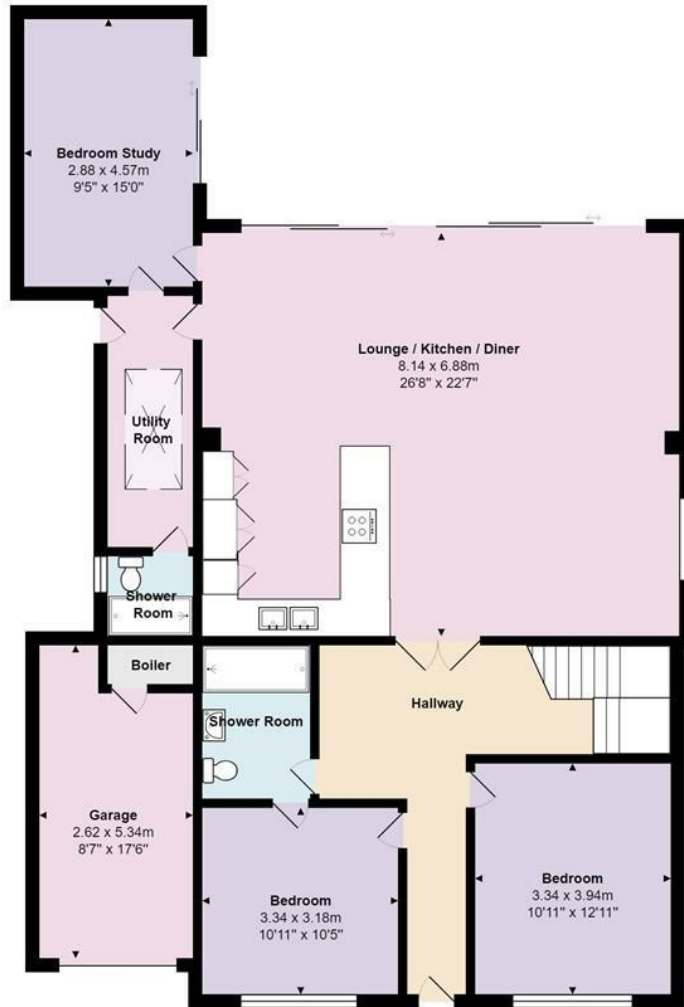
Location

Located just a short distance from Southbourne Beach, and Hengistbury Head this property offers the perfect spot to enjoy the seaside. Nearby, you can explore the beautiful River Stour and the historic Hengistbury Head, known for its breathtaking views, nature reserve, and scenic walking trails. Hengistbury Head also features the Hiker's Café and offers a walk to Mudeford Spit.

Local amenities include the popular Bistro on the Beach, with excellent food and stunning sea views, and the Riverside Bistro Pub, which has gardens along the river. A golf course is also within walking distance from Braemar Avenue.

The property is conveniently located near the "Broadway" shops, offering a local store, and post office. Good schools are nearby, and Christchurch and Bournemouth railway stations provide direct links to London in just two hours.





Ground Floor

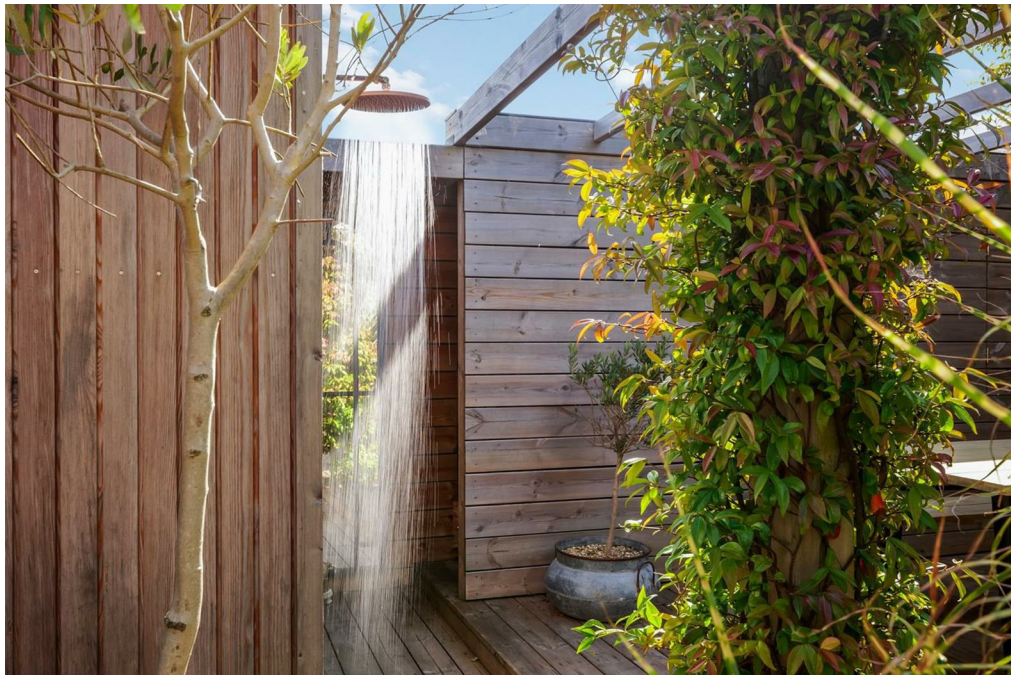


First Floor



Total Area: 188.8 m² ... 2032 ft²
All measurements are approximate and for display purposes only







DANEHURST
— ESTATE AGENTS —

01202 289000
www.danehurstea.co.uk