



DANEHURST
— ESTATE AGENTS —

Beaconsfield Road, Christchurch

Price Guide £350,000 - £375,000





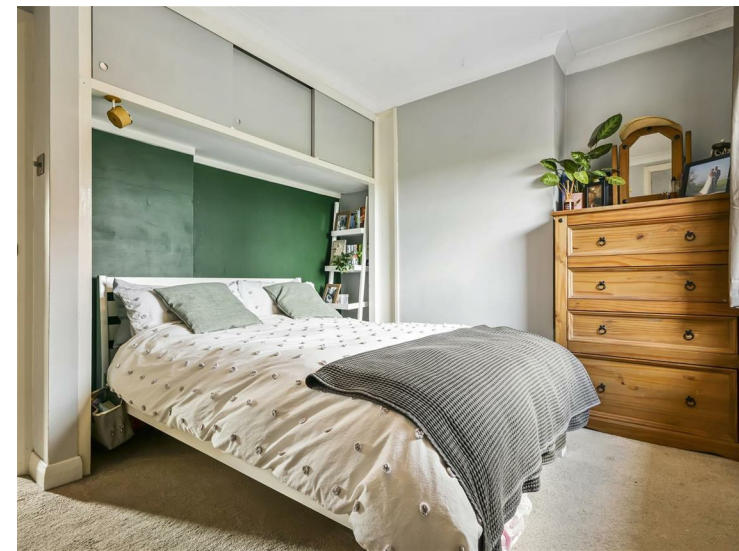
**** GUIDE PRICE £350,000 - £375,000 ****

This charming mid terrace character cottage is located in a convenient cul-de-sac just off Bargates. The property is ideally positioned within only a few minutes walk of Christchurch town centre and the mainline railway station, making it perfect for those seeking both convenience and access to excellent transport links. Additionally, it falls within the highly desirable Twynham School catchment area.

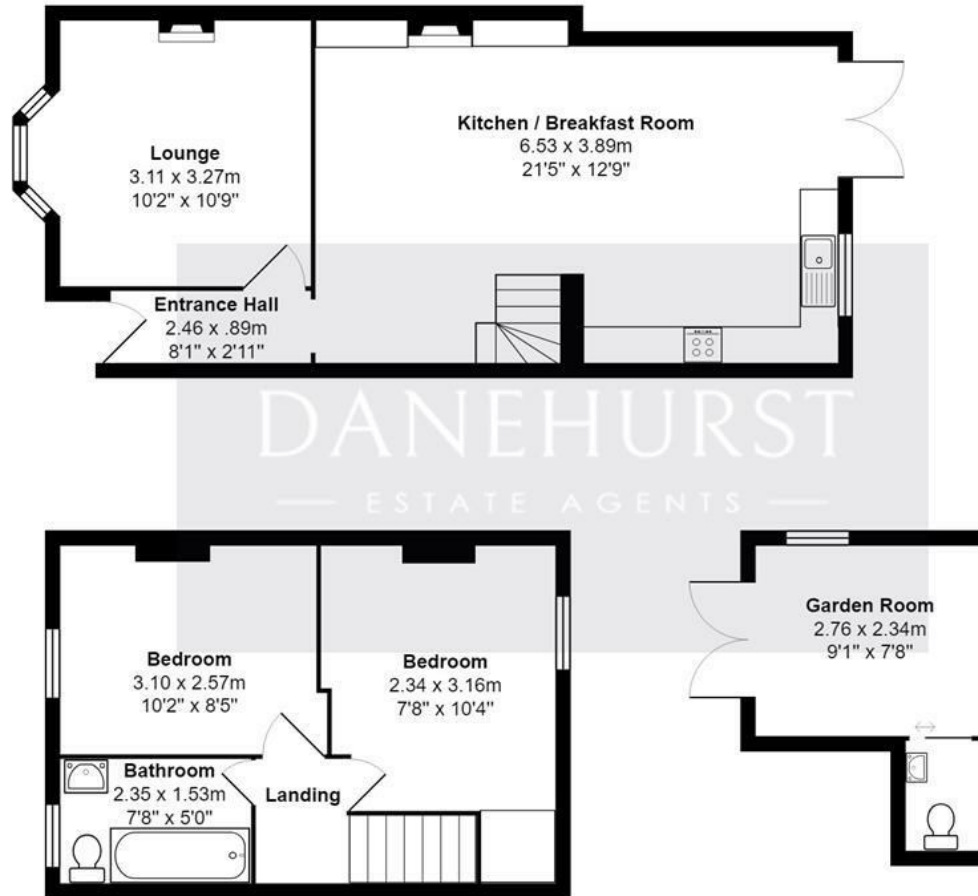
As you enter the property, a welcoming hallway leads to a separate cosy lounge featuring an open fireplace, adding to the cottage's character. The rear of the house opens up to a spacious, open-plan kitchen/diner complete with a log burner, a range of base and wall units, and integrated appliances, creating a perfect space for both cooking and entertaining. Upstairs, the property offers two well-proportioned bedrooms and a bathroom.

The rear garden is primarily laid to lawn, complemented by shrub borders and a contemporary garden room, offering versatile use which includes its own cloakroom with a WC and basin, providing an ideal workspace or guest accommodation.

TENURE: Freehold EPC RATING: C COUNCIL TAX BAND: C



Beaconsfield Road, Christchurch, BH23 1QT



Total Area: 64.3 m² ... 692 ft² (excluding garden room)
All measurements are approximate and for display purposes only



Viewing arrangements by appointment

01202 289000

info@danehurstea.co.uk

www.danehurstea.co.uk



Interested parties should satisfy themselves, by inspection or otherwise as to the accuracy of the description given and any floor plans shown in these property details. All measurements, distances and areas listed are approximate. Fixtures, fittings and other items are NOT included unless specified in these details. Please note that any services, heating systems, or appliances have not been tested and no warranty can be given or implied as to their working order.