



DANEHURST  
— ESTATE AGENTS —

**Rowlands Hill, Wimborne**

**£245,000**





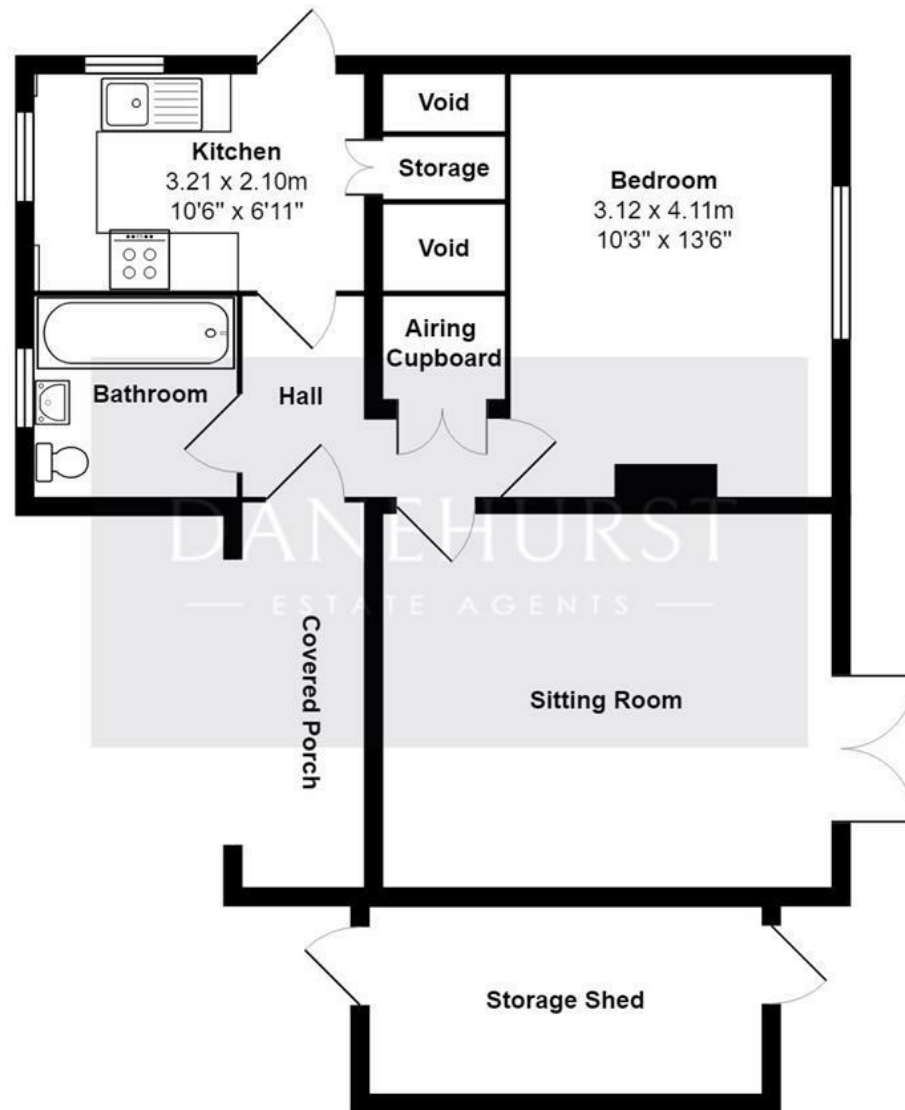
A truly delightful one bedroom ground floor property with direct access to its own private garden. This is a ground floor apartment but it feels more like a bungalow as it is located in the old gatehouse with just one flat above, has its own covered porch which leads to the front door.

This delightful home is located just a short walk from Wimborne Town Centre and benefits from two allocated parking spaces.

Throughout the apartment there are high ceilings creating the feeling of extra space, the sitting room is a bright and spacious space with french doors opening on to the garden. A single step leads down to the delightful bedroom which has a large feature window. The modern kitchen has been well appointed and has a comprehensive range of units and appliances. The bathroom is again modern and benefits from a shower over the bath.

Outside: To the rear of the apartment is a fully enclosed garden, with direct access to the road. The garden is particularly private but would benefit from some landscaping. In addition there is a side garden just off the kitchen. To the front there are two parking spaces right by the covered porch with a further lean-to storage shed to the side.







**Viewing arrangements by appointment**

**01202 289000**

**[info@danehurstea.co.uk](mailto:info@danehurstea.co.uk)**

**[www.danehurstea.co.uk](http://www.danehurstea.co.uk)**



Interested parties should satisfy themselves, by inspection or otherwise as to the accuracy of the description given and any floor plans shown in these property details. All measurements, distances and areas listed are approximate. Fixtures, fittings and other items are NOT included unless specified in these details. Please note that any services, heating systems, or appliances have not been tested and no warranty can be given or implied as to their working order.