

# DANEHURST



STRUAN GARDENS, ASHLEY HEATH, RINGWOOD, BH24 2EQ

Price guide £1,175,000



An exceptional 4/5-bedroom residence, situated on one of the most prestigious roads in Ashley Heath. This truly versatile home offers accommodation with advantage of ground floor rooms, suitable for an Annex. The magnificent kitchen / breakfast / family room is a particular feature of this home, fitted with a wide range of bespoke units and appliances, island unit and beautiful granite worktops. It further benefits from French doors leading out to the Sun Terrace and garden beyond. The sitting room features a dual-aspect design, boasting doors that open to both the garden and the newly built garden room. This addition not only provides direct access to the garden but also effortlessly connects to what could serve as an annex. There is a spacious utility room, cloak room and boot room with access to the integrated garage. The spacious reception hall provides generous storage space and leads to two additional bedrooms, one of which could be repurposed as a sitting room. Together with the shower room and study, this area is ideally suited to serve as a self-contained annex.

On the upper floor, the master bedroom is exceptionally spacious, equipped with extensive built-in wardrobes, a dressing area, and a generous ensuite bathroom. It is complemented by two additional double bedrooms and a family bathroom.

Outside: the front garden has been beautifully landscaped and is fully enclosed with electric gates, offering ample off-road parking, and giving access to the garage with its power door. To the rear of the house, there is a manicured garden with sun terrace, patio, summer house, arbour, and outside lighting, along with the well-stocked borders and lawn make this space a delight to enjoy throughout the summer months.

Council Tax Band: G

EPC Rating: C

Tenure: Freehold



- Immaculate Condition
- Rooms suitable for Annex
- Stunning Kitchen Family Room
- Large Sitting Room
- 4/5 Bedrooms
- Prestigious Location
- Summer House with Power and Lighting
- Garden Room
- Manicured Gardens
- Dorset Council Tax Band G





## Location

Ashley Heath is a popular residential area just a short distance from the market town of Ringwood. Surrounded by lush woodlands, Ashley Heath offers a serene escape into nature at Moors Valley Country Park and offers wonderful walks along the Castleman Trailway

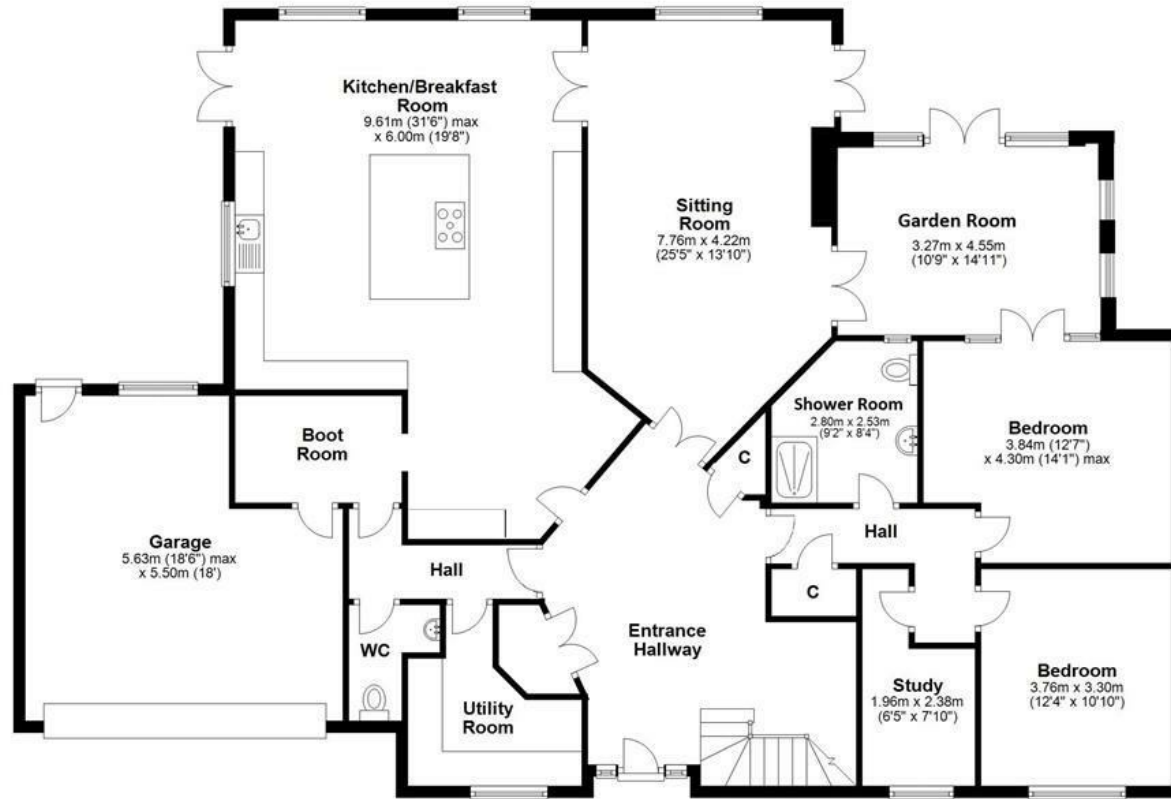
The village boasts a close-knit community atmosphere, where residents take pride in their surroundings. There are a wide variety of local amenities including convenience store just along the road. Its proximity to the New Forest means there is easy access to explore the area's natural beauty.



Total area: approx. 308.9 sq. metres (3324.6 sq. feet)

### Ground Floor

Approx. 215.3 sq. metres (2317.3 sq. feet)



### First Floor

Approx. 93.6 sq. metres (1007.3 sq. feet)



Whilst every attempt has been made to ensure the accuracy of the floor plan, measurements of doors, windows, rooms and any other items are approximate and no responsibility is taken for error, omission or misstatement. This plan is for illustrative purposes only and should be used as such by any prospective purchaser. The services systems and appliances shown have not been tested and no guarantee as to their operability or efficiency can be given.





DANEHURST



01202 289000

[www.danehurstea.co.uk](http://www.danehurstea.co.uk)