



1 Empress Drive

Wallingford, OX10 0FY

75% Shared Ownership £240,000

A well presented and maintained 2 bedroom second floor apartment at Frances Curtis Court situated just outside Wallingford which provides Independent Living for the over 55's. Available with no onward chain. The apartment offers an open plan modern kitchen with integrated hob, oven, extractor hood, fridge/freezer and washer/dryer. Adjacent dining/living room area. Two good size bedrooms with a Jack-and-Jill ensuite shower room which is accessible from both the hall and master bedroom. Entrance hallway with good size storage cupboard.

Benefits include communal wifi, café and residents' communal sitting room and hair salon. There are two car parks for residents and visitors and beautiful landscaped gardens.

Designed to provide independent living for people and with the addition of some extra domiciliary support if required, this is not a care home but offers support for people who have low needs, as well as those who have mobility or health problems. Domiciliary care staff are on duty day and night. Living here offers privacy, independence and flexibility of essential on-site care services.

- Estimated Monthly Service Charge £409.25
- Estimated Weekly All-Care Charge £45
- Two good sized bedrooms
- Second Floor Apartment
- Jack & Jill Ensuite Shower Room
- Open Plan Kitchen, Dining/ Living area
- Café and Residents' Communal Sitting Room
- Beautiful landscaped Gardens
- Car Park for Residents and Visitors



2



1

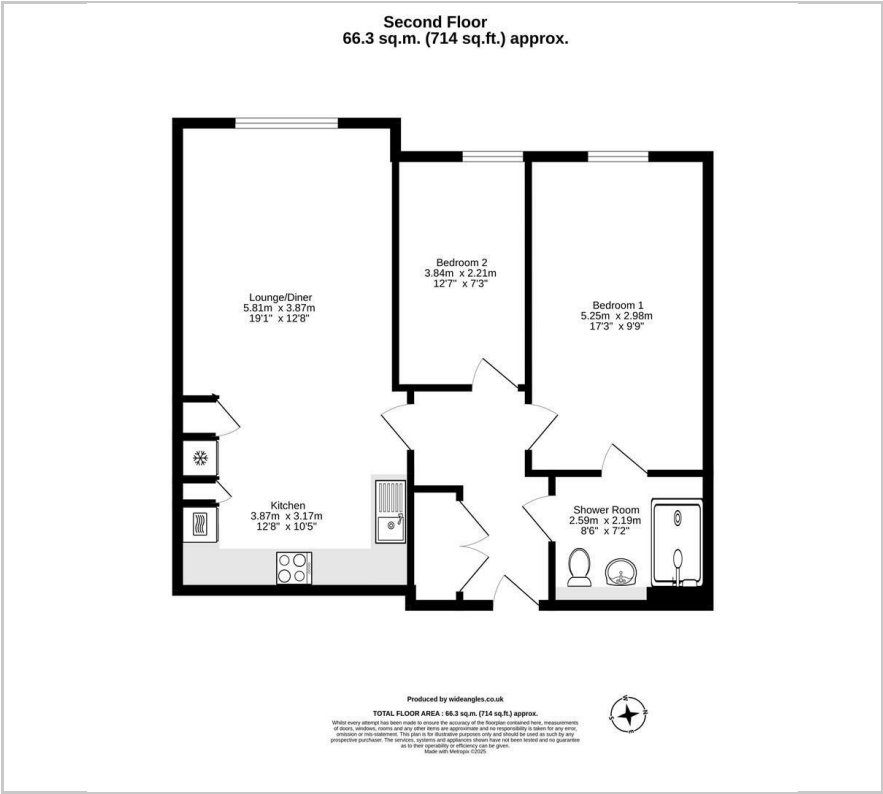


1



B

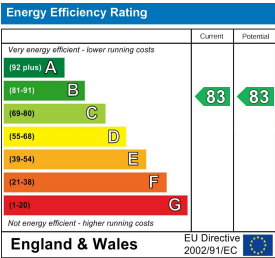
Floor Plan



Area Map



Energy Efficiency Graph



These particulars, whilst believed to be accurate are set out as a general outline only for guidance and do not constitute any part of an offer or contract. Intending purchasers should not rely on them as statements of representation of fact, but must satisfy themselves by inspection or otherwise as to their accuracy. No person in this firm's employment has the authority to make or give any representation or warranty in respect of the property.