



8 Willow Farm

Marcham Abingdon, OX13 6FP

50% Shared Ownership £215,000

This attractive, modern, well presented, 3 bedroom detached property is situated within a small select village development, in Marcham.

The property offers well proportioned accommodation incorporating on the ground floor, entrance hall with a cloakroom, spacious and light living room with doors leading out to the rear garden, and a stylish kitchen/dining room. On the first floor master bedroom, family bathroom and two further great size bedrooms. Two allocated parking spaces and rear garden measuring 10 x 11.6m enclosed with feature wall and fence.

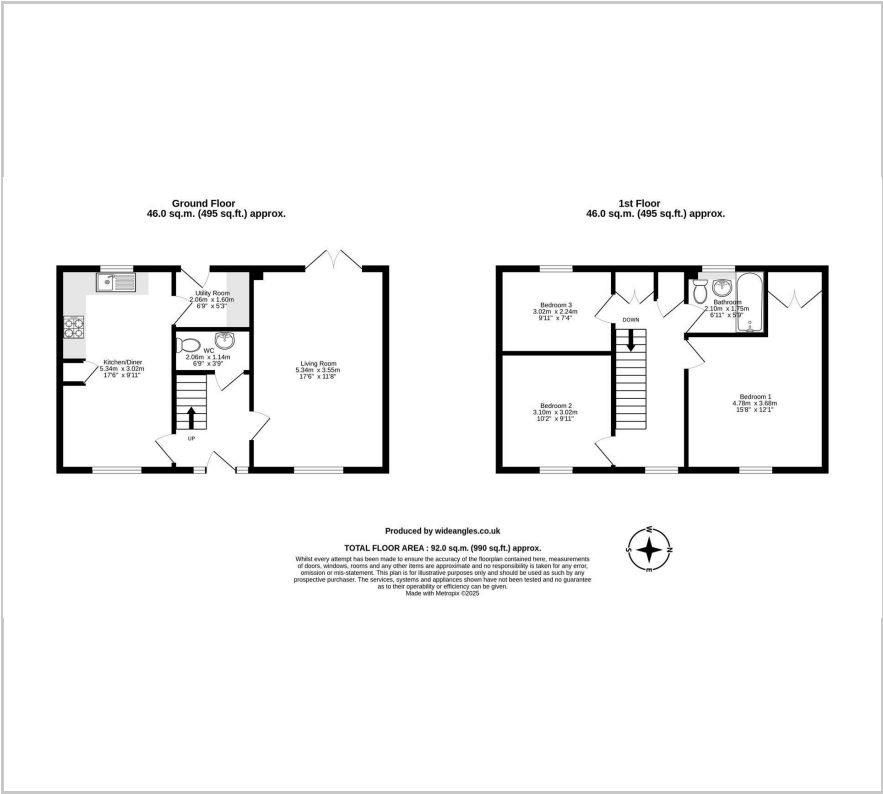
Marcham is a well regarded village with a thriving local community just two miles west of Abingdon. It has a community run Post Office/store, public house, scenic church, central community centre complete with village cricket green. Also, it has a junior school and regular public transport. Highly rated Frilford Heath Golf Club is within 3 miles, providing three 18-hole Championship quality courses for those keen golfers. Millets Farm & Garden Centre within 2 miles.

Whilst the village is surrounded by countryside, it is well located for the A34 which connects northbound to Oxford and the M40 southbound to the M4 and for commuters, Didcot Parkway railway station provides a regular mainline connection to London Paddington.

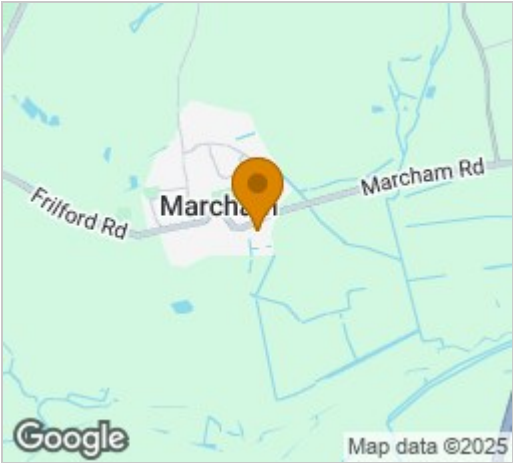
- Full open market price £ 430,000
- Rent £ 548.96 pcm
- Service Charge £ 121.85 pcm
- Three great size bedrooms
- Family bathroom
- Stylish, modern fitted kitchen/dining room
- Light and spacious dual aspect family living room.
- Rear garden measuring 10 x 11.6m enclosed with feature wall and fence.
- Two allocated parking spaces.
- Village location



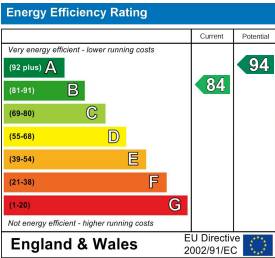
Floor Plan



Area Map



Energy Efficiency Graph



These particulars, whilst believed to be accurate are set out as a general outline only for guidance and do not constitute any part of an offer or contract. Intending purchasers should not rely on them as statements of representation of fact, but must satisfy themselves by inspection or otherwise as to their accuracy. No person in this firms employment has the authority to make or give any representation or warranty in respect of the property.