



## 15 Corbetts Way

Thame, OX9 2FL

75% Shared Ownership £277,500

Corbetts Way is a well presented and spacious first floor apartment with a bright open plan kitchen and living area, two bedrooms and shower room.

Windmill Place is a development of 40 apartments for independent living for the over 55's. The flats are built for wheelchair users, have fitted kitchens, bathrooms with level access showers. Windmill Place offers •Comfortable Communal Lounge •Hobbies and Activity room •Restaurant •Hair & Beauty Salon •Guest Suite •Buggy Store •Lift access to all floors •Laundry •Landscaped communal grounds •Dedicated Community Manager •Resident Care Team •24 hour emergency alarm system

Thame is a traditional English market town in Oxfordshire, about 9 miles (14 km) east of the city of Oxford and 7 miles (11 km) southwest of the Buckinghamshire town of Aylesbury. It has a unique heritage, with a strong independent retail sector and a wide range of pubs, restaurants and tea rooms.

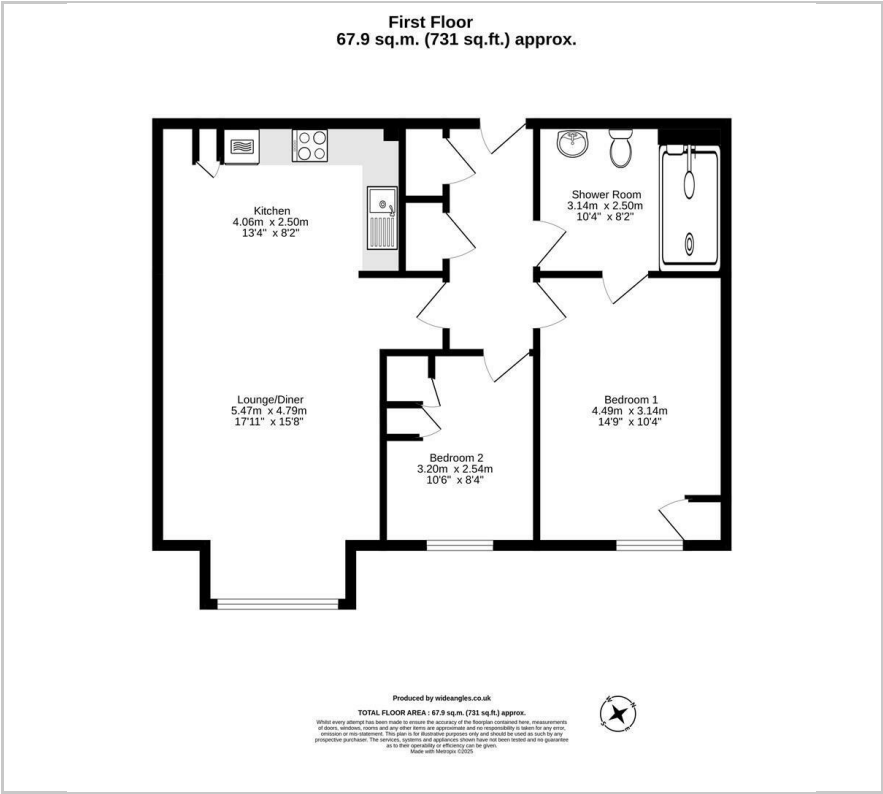
There are plenty of good, local facilities in the town (including a community hospital) and a lively, weekly market.

- Full market price £370,000
- Rent £0 on 25% outstanding share
- Service charge approximately £292.92 pcm
- Ground rent approximately £8.33 pcm
- Thames water charge £20 pcm
- Core care charge £26.99 per week - 24-hour emergency alarm system
- Two good sized bedrooms
- Open plan and light kitchen living space
- Comfortable communal lounge and conservatory
- Over 55's Scheme





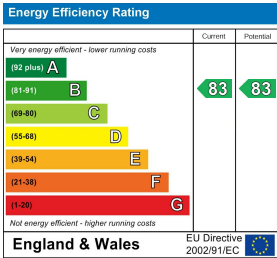
Floor Plan



Area Map



Energy Efficiency Graph



These particulars, whilst believed to be accurate are set out as a general outline only for guidance and do not constitute any part of an offer or contract. Intending purchasers should not rely on them as statements of representation of fact, but must satisfy themselves by inspection or otherwise as to their accuracy. No person in this firm's employment has the authority to make or give any representation or warranty in respect of the property.