



## 7 Horse Leys

Rotherfield Greys, RG9 4BQ

**40% Shared Ownership £158,000**

A very well presented 2 bedroom ground floor apartment only 5 years old. Comprising of two double bedrooms, a spacious and light kitchen living space with door opening to a small patio area. Good sized bathroom, allocated parking with carport, gas central heating and double glazed windows.

Situated just on the outskirts of Henley-on-Thames in a small and quiet development. Henley-on-Thames is one of the most beautiful towns in England previously voted by The Times & The Telegraph as one of the best places to live in the English countryside. In the town centre Henley-on-Thames is a shoppers paradise providing a wide array of boutique shops, art galleries and artisan markets. There is also fantastic transport links including a train stations.

- Full market price £395,000
- Rent £520.04 pcm approximately
- Service charge £152.63 pcm approximately
- 2 Bedroom ground floor apartment
- Spacious kitchen / living space with door opening on to small patio area
- 2 double bedrooms
- Good sized bathroom
- Two allocated parking spaces including carport
- Gas central heating
- Double glazed windows



2



1



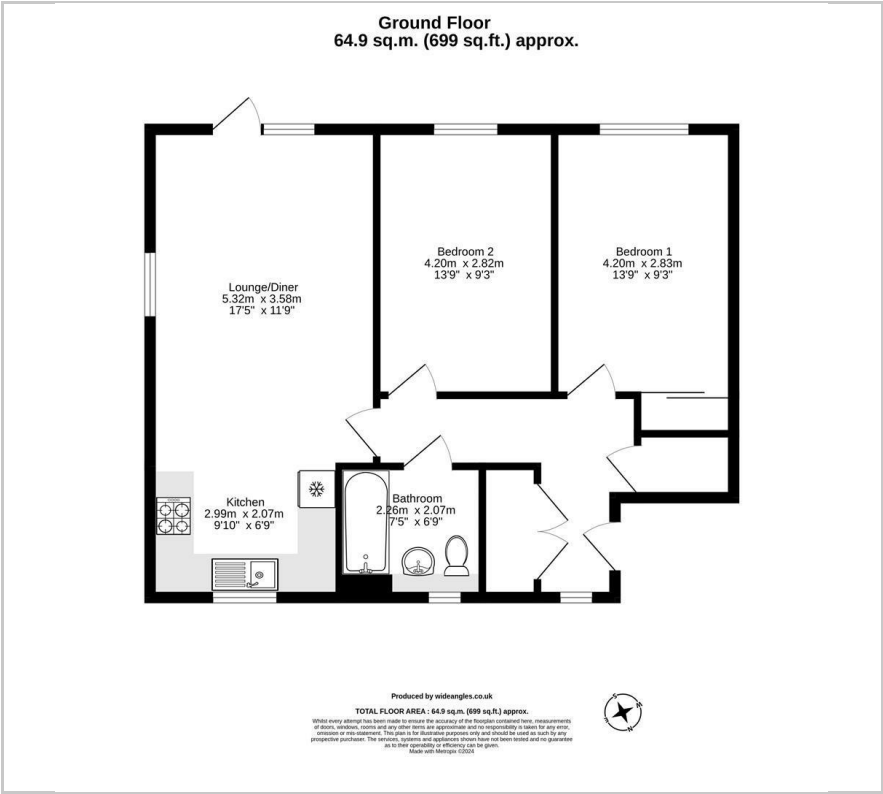
1



B



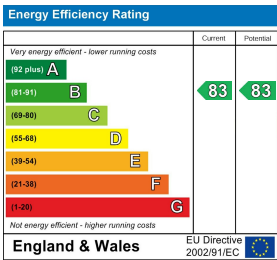
Floor Plan



Area Map



Energy Efficiency Graph



These particulars, whilst believed to be accurate are set out as a general outline only for guidance and do not constitute any part of an offer or contract. Intending purchasers should not rely on them as statements of representation of fact, but must satisfy themselves by inspection or otherwise as to their accuracy. No person in this firm's employment has the authority to make or give any representation or warranty in respect of the property.

Royal Scot House 99 Station Road, Didcot, Oxfordshire, OX11 7NN  
Tel: 01235 515900 Email: Sales@soha.co.uk