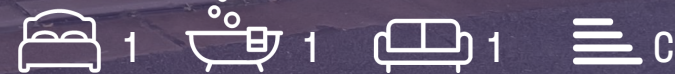


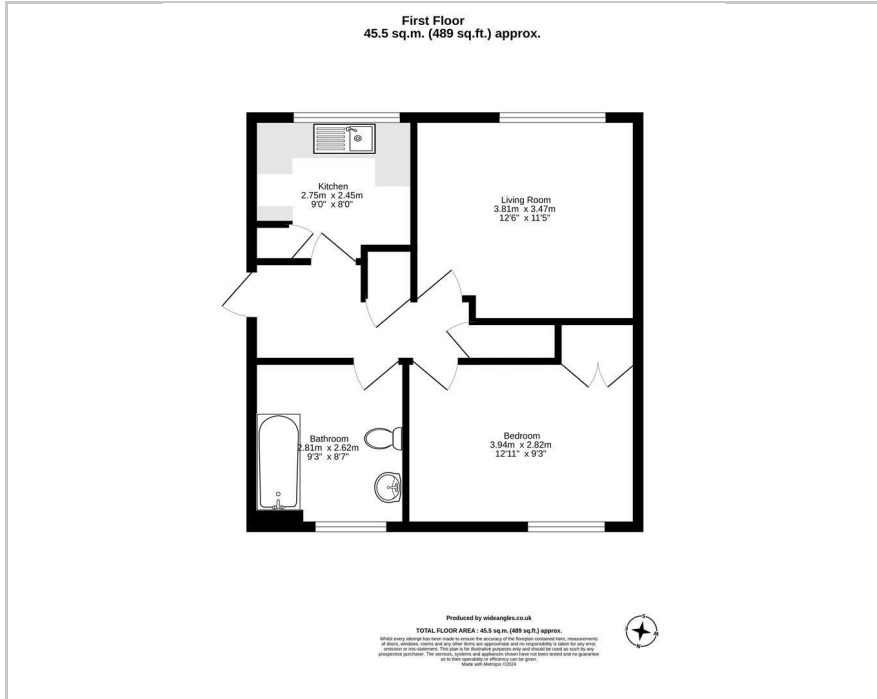


11G Watermans Road, Henley-On-Thames, RG9 1EX

50% Shared Ownership £ 122,500



Floor Plan



Accommodation

- Full market price £ 245,000
- Rent £ 342.78 pcm approximately
- Service charge £ 29.50 pcm approximately
- Ground rent £ 8.33 pcm approximately
- 1 bedroom first floor apartment with extended lease of 990 years
- Convenient location
- Spacious bathroom
- Off street parking
- Gas central heating
- New replacement boiler 2022



Area Map



Energy Efficiency Graph

Energy Efficiency Rating		Current	Potential
Very energy efficient - lower running costs			
(92 plus) A			
(81-91) B		79	80
(69-80) C			
(55-68) D			
(39-54) E			
(21-38) F			
(1-20) G			
Not energy efficient - higher running costs			
England & Wales		EU Directive 2002/91/EC	

These particulars, whilst believed to be accurate are set out as a general outline only for guidance and do not constitute any part of an offer or contract. Intending purchasers should not rely on them as statements of representation of fact, but must satisfy themselves by inspection or otherwise as to their accuracy. No person in this firm's employment has the authority to make or give any representation or warranty in respect of the property.