



28 Spring Field Way

Sutton Courtenay, OX14 4FQ

50% Shared Ownership £ 170,000

A beautifully presented 2 bedroom end of terrace house with fantastic sized garden in a quiet position within the pretty village of Sutton Courtenay.

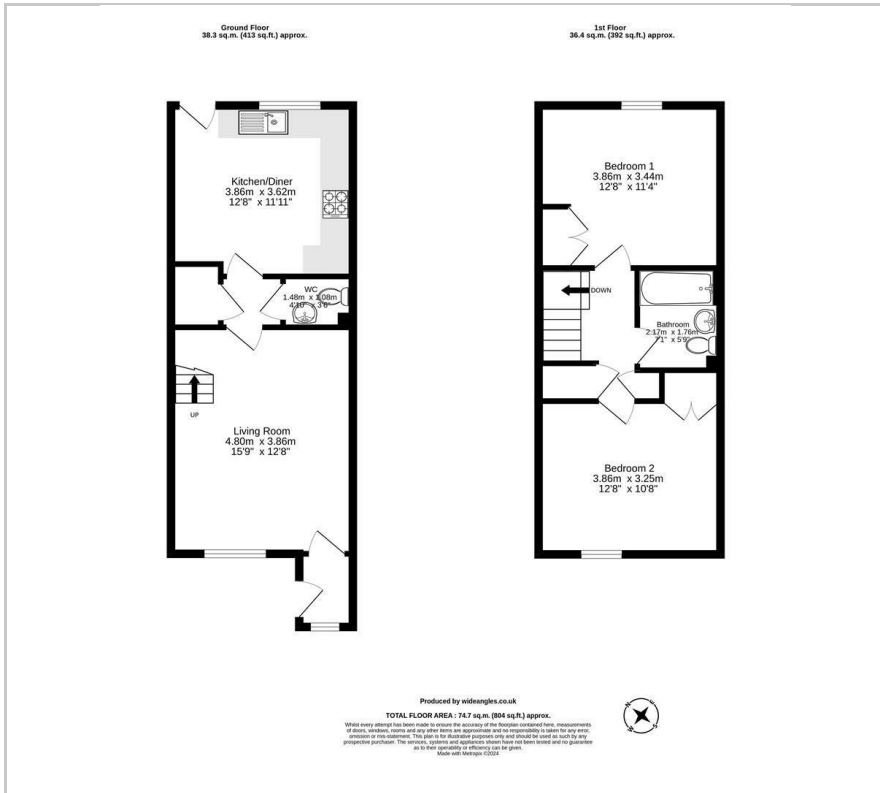
The property comprises of an entrance porch, spacious and light living room, downstairs cloakroom, leading to a kitchen diner that leads out onto a pretty patio area with the added benefit of an covered pergola, in addition there is a deked area at the bottom of the garden as well as the garden wrapping round to the side of the house. Upstairs there is two double bedrooms and a family bathroom. The house also offers gas central heating and double glazed windows.

Sutton Courtenay is a Thameside village. The village offers a number of facilities catering very adequately for its close-knit community. Abingdon-on Thames is within 5 miles offering comprehensive shopping, schooling, and recreational amenities. There is quick and easy access to the nearby A34 connecting northbound to Oxford and the M40 southbound to the M4. For commuters Didcot Parkway is within 4 miles and provides a regular mainline connection to London Paddington, in as little as 40 minutes.

- Full market price £ 340,000
- Rent £ 442.51 pcm approximately
- Service charge £ 34.51 pcm approximately
- Two double bedrooms
- Family bathroom
- Separate living room
- Good sized kitchen/diner
- Downstairs cloakroom
- Gas central heating



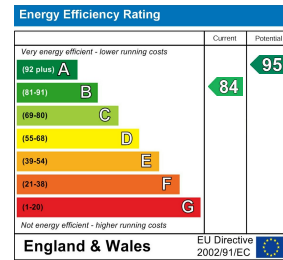
Floor Plan



Area Map



Energy Efficiency Graph



These particulars, whilst believed to be accurate are set out as a general outline only for guidance and do not constitute any part of an offer or contract. Intending purchasers should not rely on them as statements of representation of fact, but must satisfy themselves by inspection or otherwise as to their accuracy. No person in this firm's employment has the authority to make or give any representation or warranty in respect of the property.