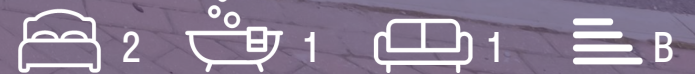


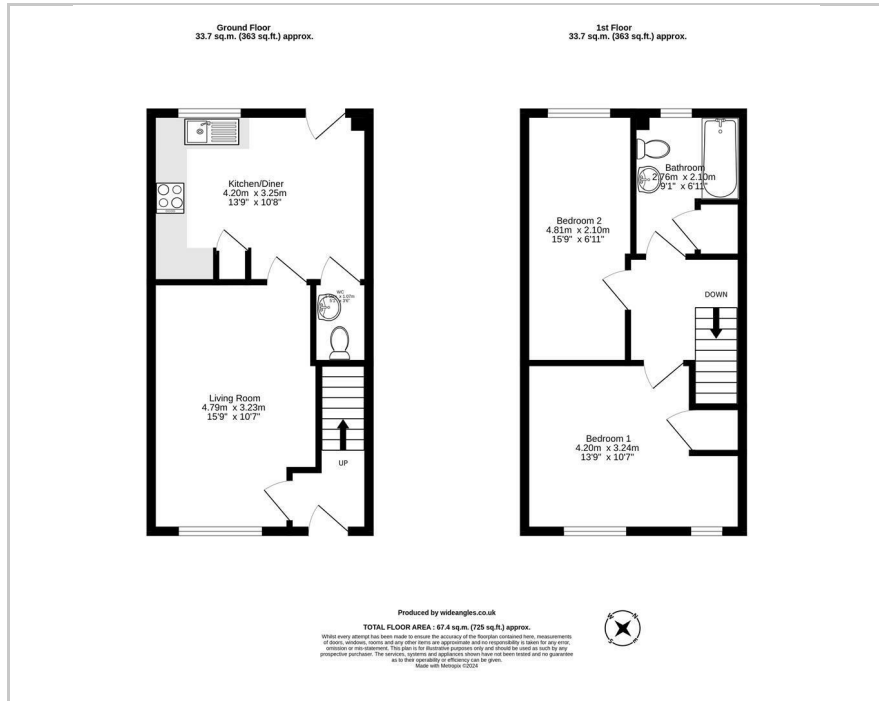


**8 Woodpecker Walk, Watlington, OX49 5BQ**

45% SharedOwnership £ 166,500



## Floor Plan



## Accommodation

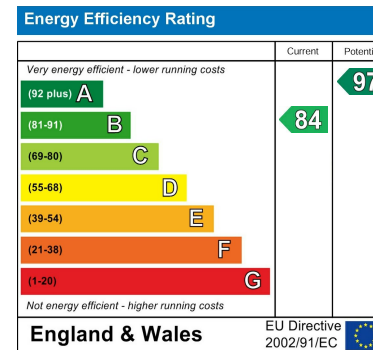
- Estimated monthly rent £456.72
- Estimated monthly service charge £18.45
- Two double bedrooms
- Bathroom
- Separate living room
- Kitchen/Diner
- Downstairs cloakroom
- Enclosed rear garden
- Two allocated parking spaces
- Rural location



## Area Map



## Energy Efficiency Graph



These particulars, whilst believed to be accurate are set out as a general outline only for guidance and do not constitute any part of an offer or contract. Intending purchasers should not rely on them as statements of representation of fact, but must satisfy themselves by inspection or otherwise as to their accuracy. No person in this firm's employment has the authority to make or give any representation or warranty in respect of the property.