



12 Ash Crescent

Harwell, OX11 0FJ

50% Shared ownership £ 160,000

Beautifully presented 2 bedroom, semi detached home set in a lovely and quiet cul de sac within a small development on the edge of the picturesque Harwell village.

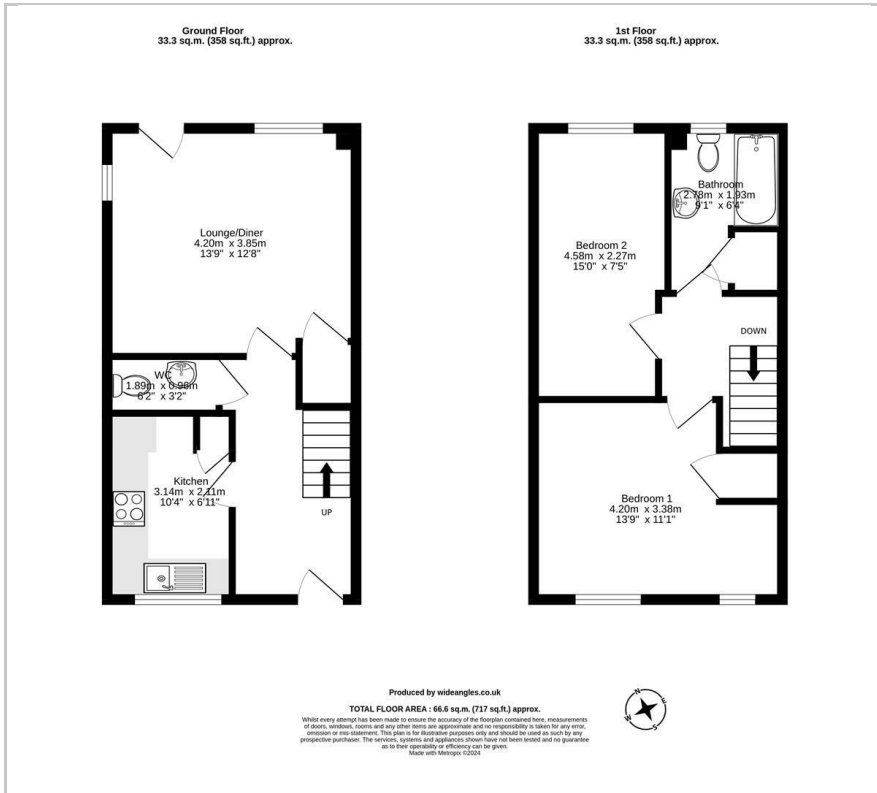
12 Ash Crescent comprises of entrance hall, kitchen, downstairs cloakroom, spacious living room leading to the fully enclosed rear garden. Upstairs there is two double bedrooms and a family bathroom. The property also has the added benefits of gas central heating, two off street parking spaces and double glazed windows.

Harwell is a pretty village and offers a primary school, Butchers, a local shop and a two pubs. Harwell is just 2 miles from Didcot which offers more comprehensive leisure and shopping facilities.

- Rent £ 392.66 pcm approximately
- Service charge £ 39.72 pcm approximately
- 2 double bedrooms
- Family bathroom
- Downstairs cloakroom
- Kitchen
- Spacious living room
- Fully enclosed rear garden
- 2 off street parking spaces
- Gas central heating



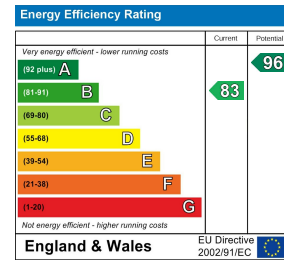
Floor Plan



Area Map



Energy Efficiency Graph



These particulars, whilst believed to be accurate are set out as a general outline only for guidance and do not constitute any part of an offer or contract. Intending purchasers should not rely on them as statements of representation of fact, but must satisfy themselves by inspection or otherwise as to their accuracy. No person in this firm's employment has the authority to make or give any representation or warranty in respect of the property.