



## 41 Priors Mill Lane

Witney, OX28 1YG

50% Shared ownership £115,000

A well presented 2 bedroom ground floor apartment which has undergone many improvements including all lighting has been replaced with LED low energy fittings. The apartment is set in a quiet location comprising of hall leading to spacious open plan kitchen and living space, with two bedrooms, a stunning bathroom and allocated parking.

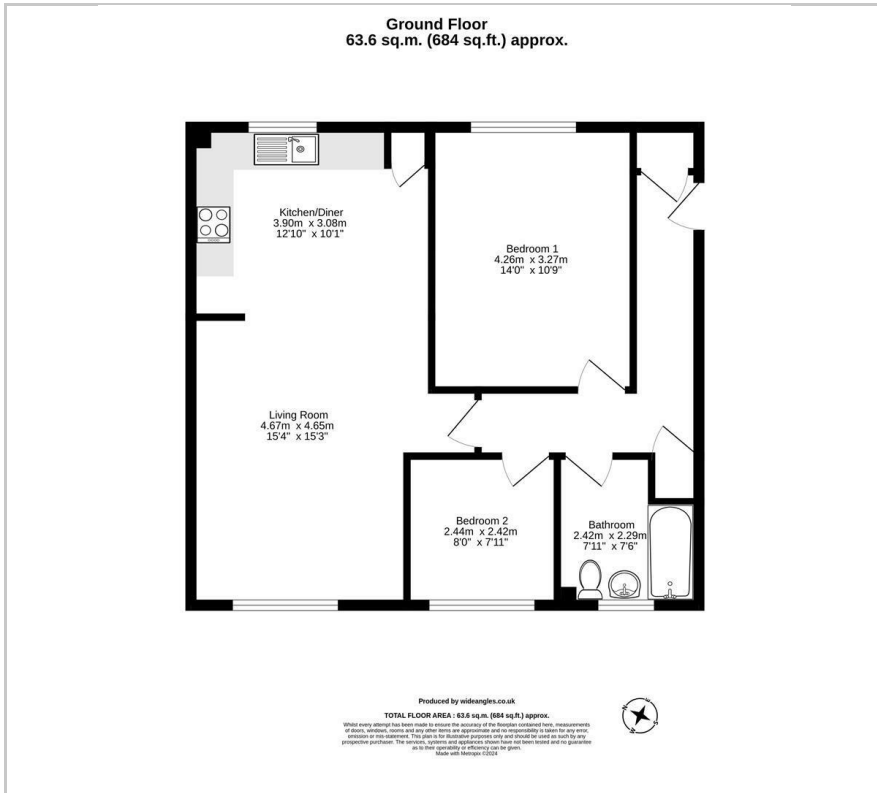
Priors Mill Lane is situated in Witney the largest market town in the Cotswolds. Witney has a charming bustling atmosphere with its unique blend of shops, antique centres and cafes including 5 mins walk to Staple Hall bus stop - a pick up and drop off point for destinations including Oxford City Centre (S1) and London (Oxford Tube).

- Estimated Monthly Rent £532.43
- Estimated Monthly Service Charge £77.78 including ground rent
- Two bedrooms.
- Stunning open plan kitchen with new hob & extractor and attractive adjacent living space.
- Beautiful bathroom with heated towel rail and new flooring.
- All lighting has been replaced with LED low energy fittings.
- New radiators to living space, bedroom and hallway. New smoke alarm to hallway.
- New hot water tank
- Allocated parking.
- Within easy walking distance to Witney High Street.





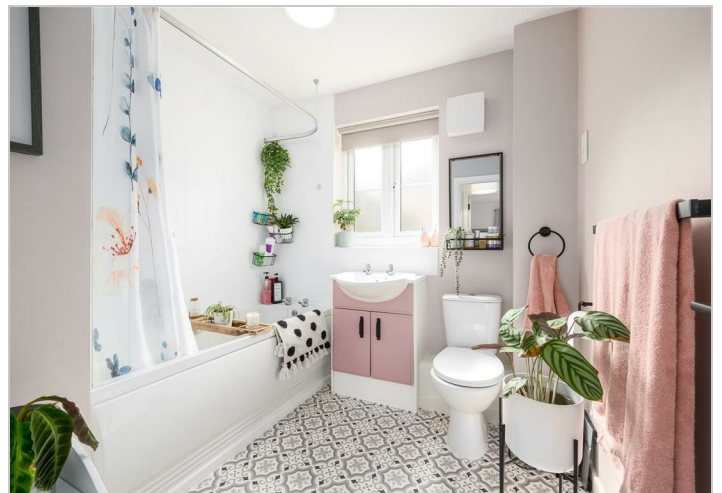
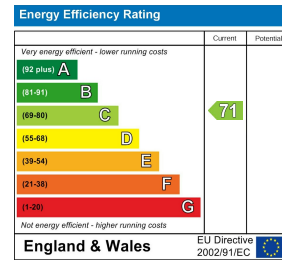
## Floor Plan



## Area Map



## Energy Efficiency Graph



These particulars, whilst believed to be accurate are set out as a general outline only for guidance and do not constitute any part of an offer or contract. Intending purchasers should not rely on them as statements of representation of fact, but must satisfy themselves by inspection or otherwise as to their accuracy. No person in this firm's employment has the authority to make or give any representation or warranty in respect of the property.