



Flat 184 Armistice Avenue

Chelmsford, CM1 6AR

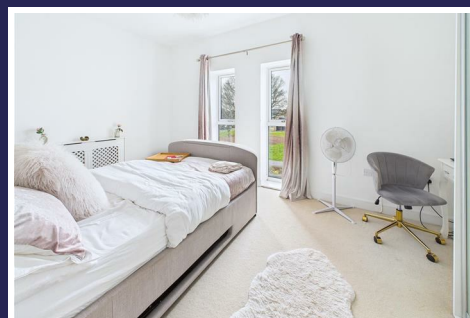
Asking price £96,000



Flat 184 Armistice Avenue

Chelmsford, CM1 6AR

Asking price £96,000



Communal Entrance

Secure telephone entrance door.

Entrance Hall

8'9 x 3'9 (2.67m x 1.14m)

Entrance door, video entry system, storage cupboard, carpet.

Bathroom

7'6 x 5'7 (2.29m x 1.70m)

Panelled bath with shower over, vanity wash hand basin, close coupled WC, heated towel rail, part tiled walls.

Bedroom

13'9 x 9'11 (4.19m x 3.02m)

Window to front, fitted mirror wardrobes, radiator, carpet.

Kitchen/Living Area

21'4 x 18'3 (6.50m x 5.56m)

Kitchen - window to front, range of fitted storage units with integrated fridge/freezer, washer/dryer, dishwasher and electric oven. Work surfaces incorporate sink unit and gas hob with extractor over.

Living Area - window to front, doors to balcony, radiator, carpet.

Balcony

Exterior

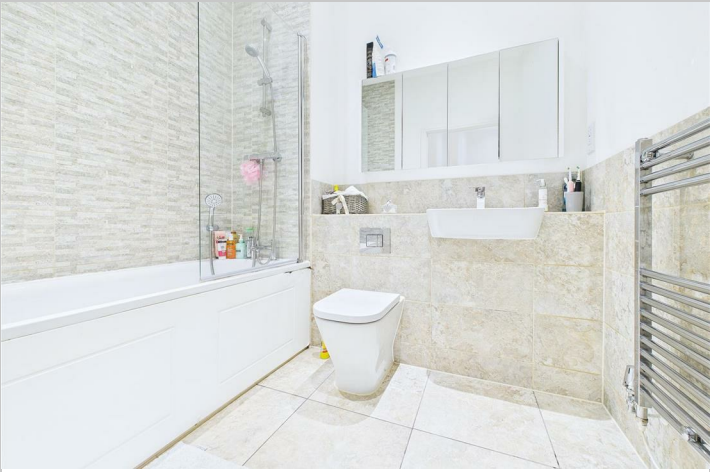
Allocated Parking

Agents Note

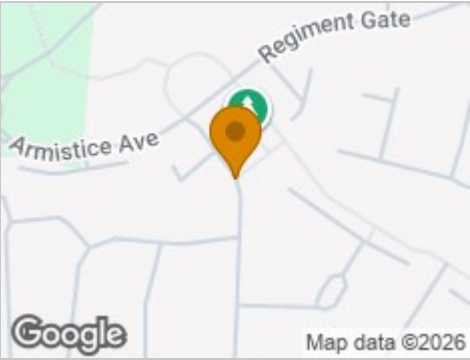
Should you be successful in having an offer accepted on a

property through ourselves, then there is an administration charge of £54.00 inc. VAT (non-refundable) to complete our Anti Money Laundering Identity checks.

Tel: 01245 330764



Road Map



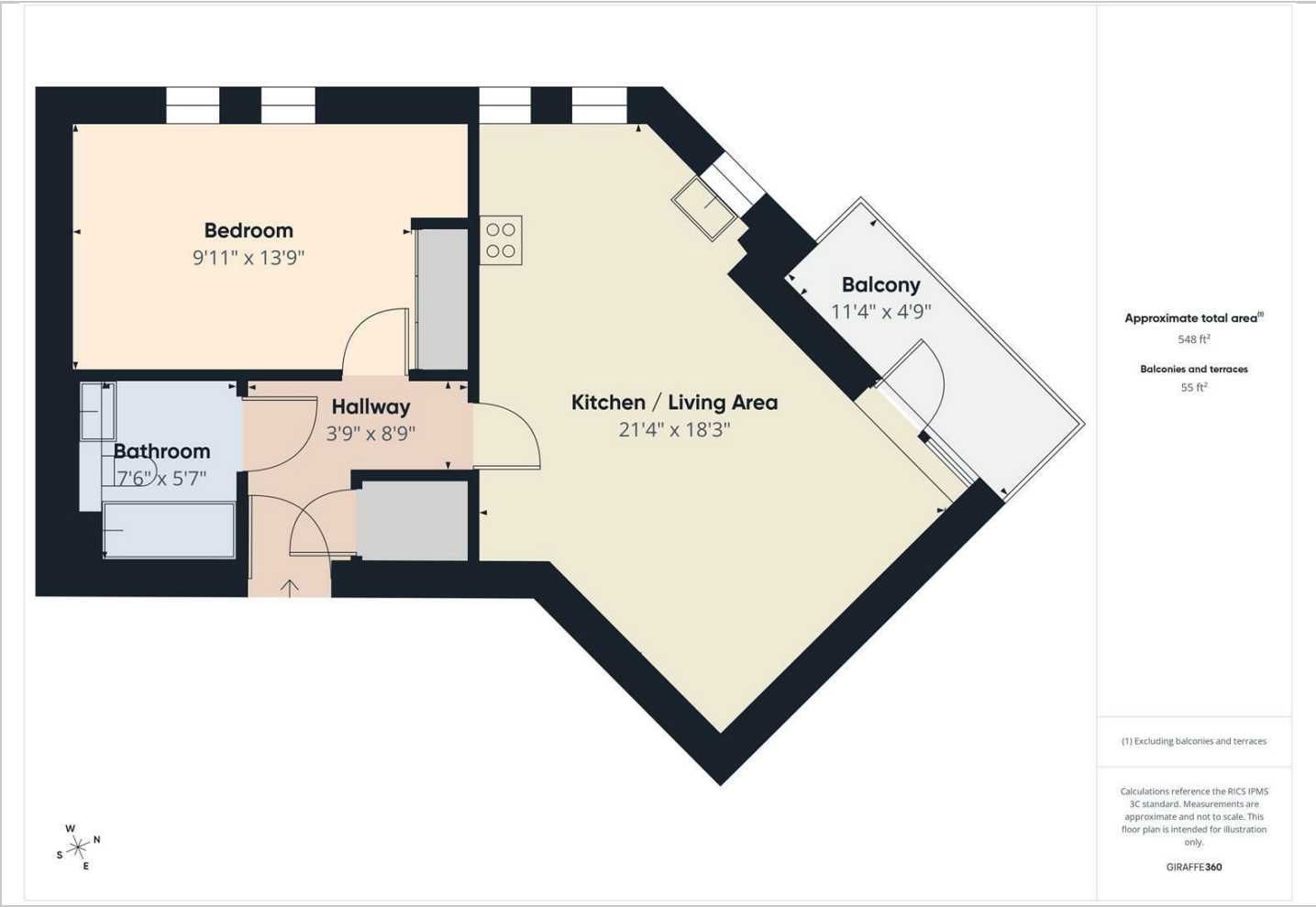
Hybrid Map



Terrain Map



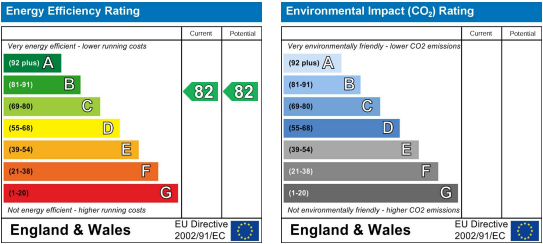
Floor Plan



Viewing

Please contact our Chelmsford Office on 01245 330764 if you wish to arrange a viewing appointment for this property or require further information.

Energy Efficiency Graph



These particulars, whilst believed to be accurate are set out as a general outline only for guidance and do not constitute any part of an offer or contract. Intending purchasers should not rely on them as statements of representation of fact, but must satisfy themselves by inspection or otherwise as to their accuracy. No person in this firms employment has the authority to make or give any representation or warranty in respect of the property.