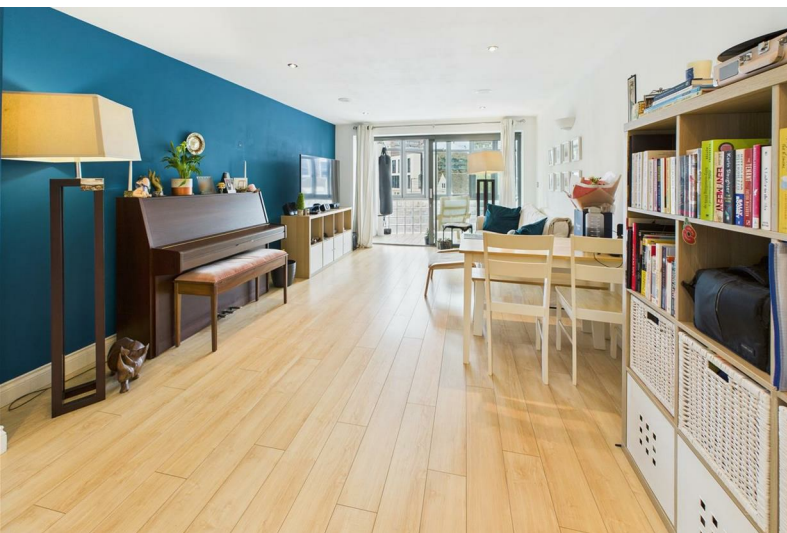




60 Victoria Court New Street

Chelmsford, CM1 1GP

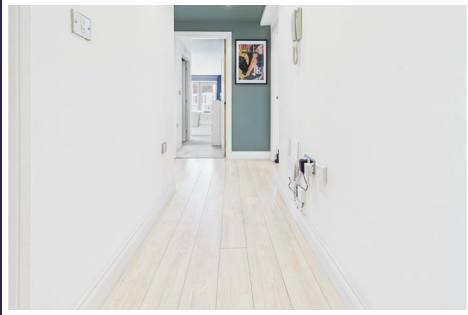
Asking price £285,000



60 Victoria Court New Street

Chelmsford, CM1 1GP

Asking price £285,000



Communal Entrance

Secure entrance with resident letterboxes, communal lift and stairs to all floors.

Entrance

11'8 max x 3'6 (3.56m max x 1.07m)

Entrance door, telephone entry system, storage cupboard, laminate flooring.

Lounge/Diner

19'7 x 11'8 (5.97m x 3.56m)

Sliding doors to Sun Room, laminate flooring, open into:

Kitchen

10'2 x 7'2 (3.10m x 2.18m)

Range of fitted storage cupboards with an integrated electric oven, fridge/freezer, washing machine and dishwasher. Work surfaces incorporate sink unit and gas hob with extractor hood over.

Re-fitted Bathroom

10'1 x 6'2 (3.07m x 1.88m)

Bath with shower over, wash hand basin, close coupled WC, heated towel rail, part tiled.

Bedroom One

15'9 x 14'7 (4.80m x 4.45m)

Window to front, door to balcony, fitted wardrobes, carpet.

Re-fitted Ensuite

4'11 x 4'7 (1.50m x 1.40m)

A recently fitted suite comprising a shower cubicle, vanity wash hand basin and a close coupled WC

Balcony

11'10 x 3'5 (3.61m x 1.04m)

Bedroom Two

15'8 x 8'6 (4.78m x 2.59m)

Window to front, fitted wardrobe

Sunroom

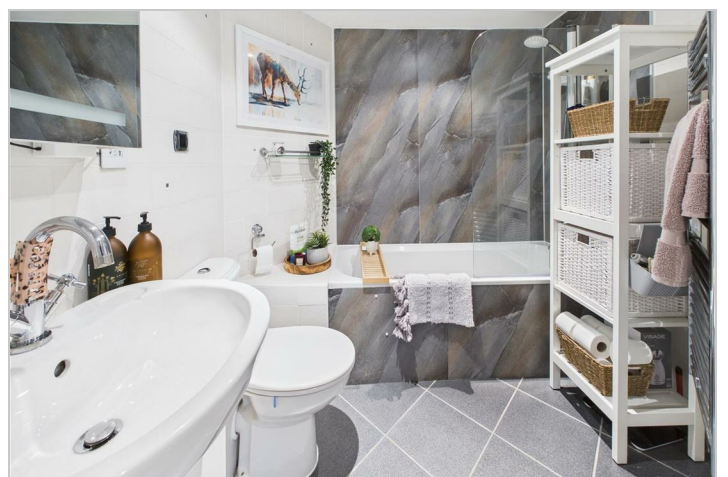
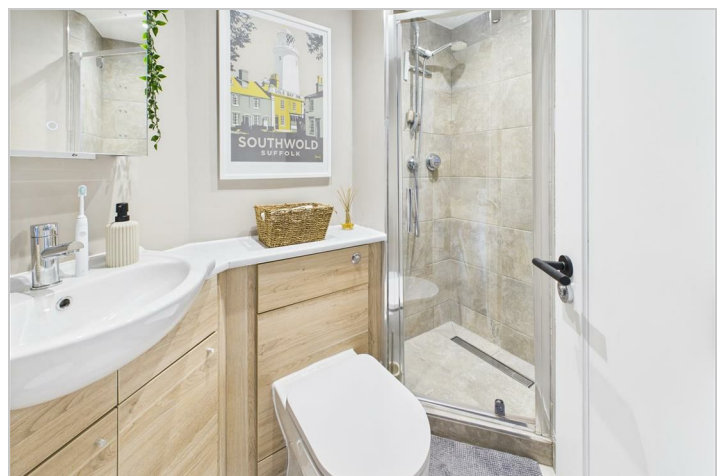
10'8 x 7'3 (3.25m x 2.21m)

Enclosed area with windows and glass blocks to the front. Door to Balcony

Exterior

Allocated Parking

Communal Seating Area with Water Fountains



Road Map



Hybrid Map



Terrain Map



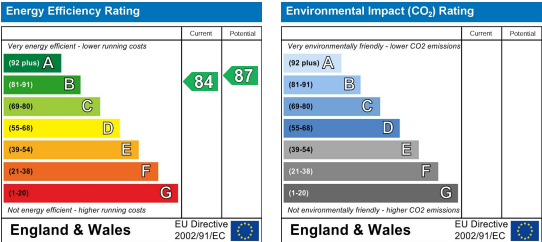
Floor Plan



Viewing

Please contact our Chelmsford Office on 01245 330764 if you wish to arrange a viewing appointment for this property or require further information.

Energy Efficiency Graph



These particulars, whilst believed to be accurate are set out as a general outline only for guidance and do not constitute any part of an offer or contract. Intending purchasers should not rely on them as statements of representation of fact, but must satisfy themselves by inspection or otherwise as to their accuracy. No person in this firms employment has the authority to make or give any representation or warranty in respect of the property.