



127 Nipsells Chase

Mayland, CM3 6EJ

Asking price £490,000



127 Nipsells Chase

Mayland, CM3 6EJ

Asking price £490,000



Entrance Hall

22'4 x 4'4 (6.81m x 1.32m)

Entrance door, radiator, door to garage, door to small utility cupboard (to be completed) radiator, stairs to first floor.

Downstairs cloakroom

WC, wash hand basin. Tiled flooring.

Kitchen

13'4 x 8'3 (4.06m x 2.51m)

Window to front, door to side. Range of fitted storage cupboards. Integrated fridge/freezer, electric oven, washing machine and dishwasher. Work surfaces incorporate sink unit with mixer taps.

Living Room

21'2 x 11'11 (6.45m x 3.63m)

Window to rear, log burner, laminate flooring, radiator, open to:

Dining Room

12'6 x 10'8 (3.81m x 3.25m)

Window to rear and doors to side, laminate flooring, radiator.

First Floor

Landing

6'3 x 5'11 (1.91m x 1.80m)

Window to side, stairs to ground floor, access to loft. Airing cupboard.

Bedroom One

12'2 x 11'10 (3.71m x 3.61m)

Window to rear, radiator, carpet.

Bedroom Two

12'2 x 9'9 (3.71m x 2.97m)

Window to front, radiator.

Bedroom Three

12' x 8'9 (3.66m x 2.67m)

Window to rear, radiator.

Bedroom Four

8'11 x 8'9 (2.72m x 2.67m)

Window to front, radiator, carpet.

Family Bathroom

6'11 x 5'5 (2.11m x 1.65m)

Window to side. Walk in shower cubicle, close coupled WC, vanity wash hand basin, radiator.

Exterior

Front Garden

Gravel driveway providing off road parking, access to rear garden and garage.

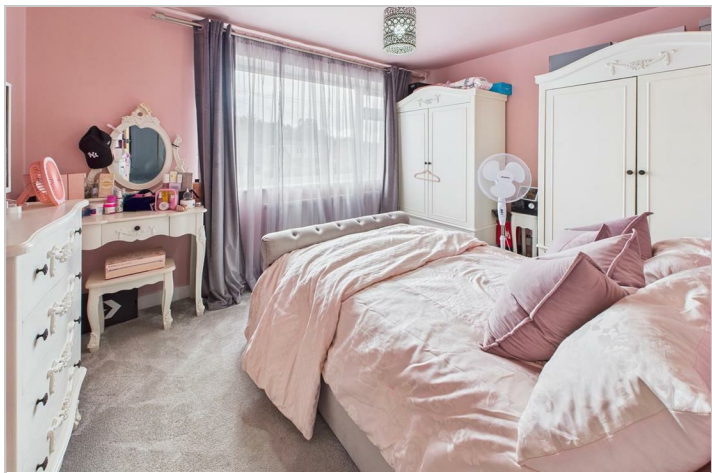
Garage

Up and over door to front, power and light connected.

Rear Garden

Paved patio area and artificial grass, fencing to boundaries, access to front.

Tel: 01245 330764



Road Map



Hybrid Map



Terrain Map



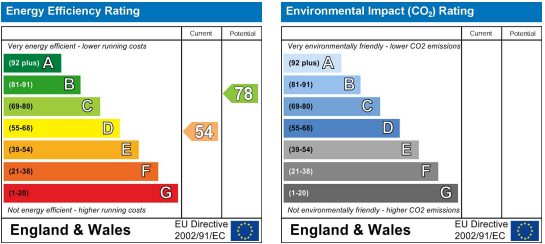
Floor Plan



Viewing

Please contact our Chelmsford Office on 01245 330764 if you wish to arrange a viewing appointment for this property or require further information.

Energy Efficiency Graph



These particulars, whilst believed to be accurate are set out as a general outline only for guidance and do not constitute any part of an offer or contract. Intending purchasers should not rely on them as statements of representation of fact, but must satisfy themselves by inspection or otherwise as to their accuracy. No person in this firms employment has the authority to make or give any representation or warranty in respect of the property.