



6 Pickerells View Dunmow Road

Ongar, CM5 0NP

£2,700 Per month



6 Pickerells View Dunmow Road

Ongar, CM5 0NP

£2,700 Per month



Entrance

Entrance door, stairs to first floor.

Living Room

17'6 x 15' (5.33m x 4.57m)

Window to front, radiator, wood effect flooring. Open to:

Kitchen

16'4 x 12'8 (4.98m x 3.86m)

A range of fitted storage cupboards with an integrated electric oven, dishwasher and fridge/freezer. Breakfast bar. Work surfaces incorporate sink unit with mixer taps, electric hob with extractor over. Patio doors to garden.

Utility Room

7'6 x 4'8 (2.29m x 1.42m)

Space and plumbing for washing machine.

Inner Hallway

8'9 x 3'3 (2.67m x 0.99m)

Storage cupboard housing waster tanks.

Bedroom

11'4 x 11' (3.45m x 3.35m)

Window to front, carpet, radiator.

Luxury Bathroom

7'11 x 7'3 (2.41m x 2.21m)

panelled bath, wash hand basin, close coupled WC, Part tiled walls, tiled floor.

Bedroom

10'10 x 10'5 (3.30m x 3.18m)

Window to rear and skylight, carpet, radiator.

First Floor

Landing

Study Area/Nursery

Carpet. Door to

Bedroom

12'11 x 12'2 (3.94m x 3.71m)

Window to front. fitted wardrobes and drawers.

Dressing Room

Range of fitted wardrobes.

Ensuite

9'5 x 9'3 (2.87m x 2.82m)

A shower cubicle, wash hand basin, close coupled WC. Part tiled.

Bedroom

12'11 x 11' (3.94m x 3.35m)

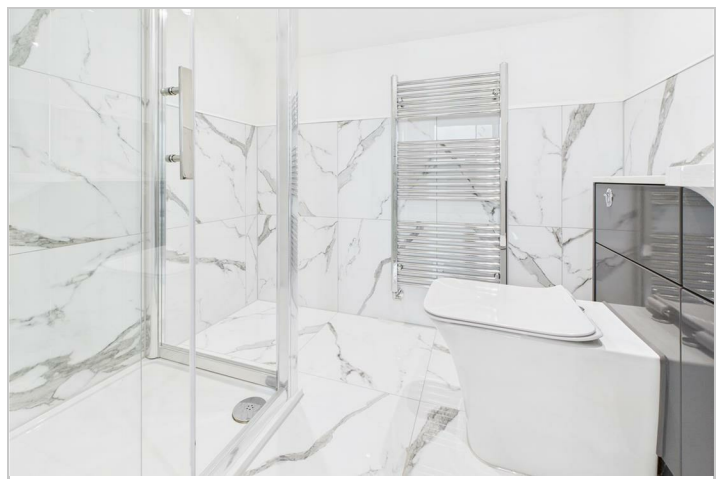
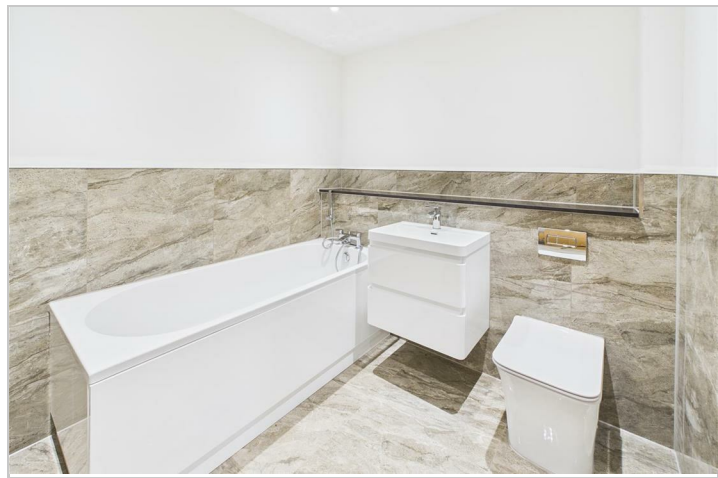
Window to front, carpet, radiator.

Ensuite

6'10 x 6' (2.08m x 1.83m)

A shower cubicle, wash hand basin, closed coupled WC, part tiled.

Tel: 01245 330764



Road Map



Hybrid Map



Terrain Map



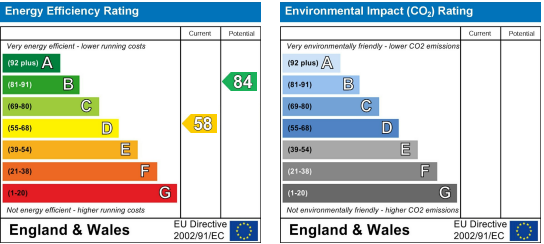
Floor Plan



Viewing

Please contact our Chelmsford Office on 01245 330764 if you wish to arrange a viewing appointment for this property or require further information.

Energy Efficiency Graph



These particulars, whilst believed to be accurate are set out as a general outline only for guidance and do not constitute any part of an offer or contract. Intending purchasers should not rely on them as statements of representation of fact, but must satisfy themselves by inspection or otherwise as to their accuracy. No person in this firm's employment has the authority to make or give any representation or warranty in respect of the property.