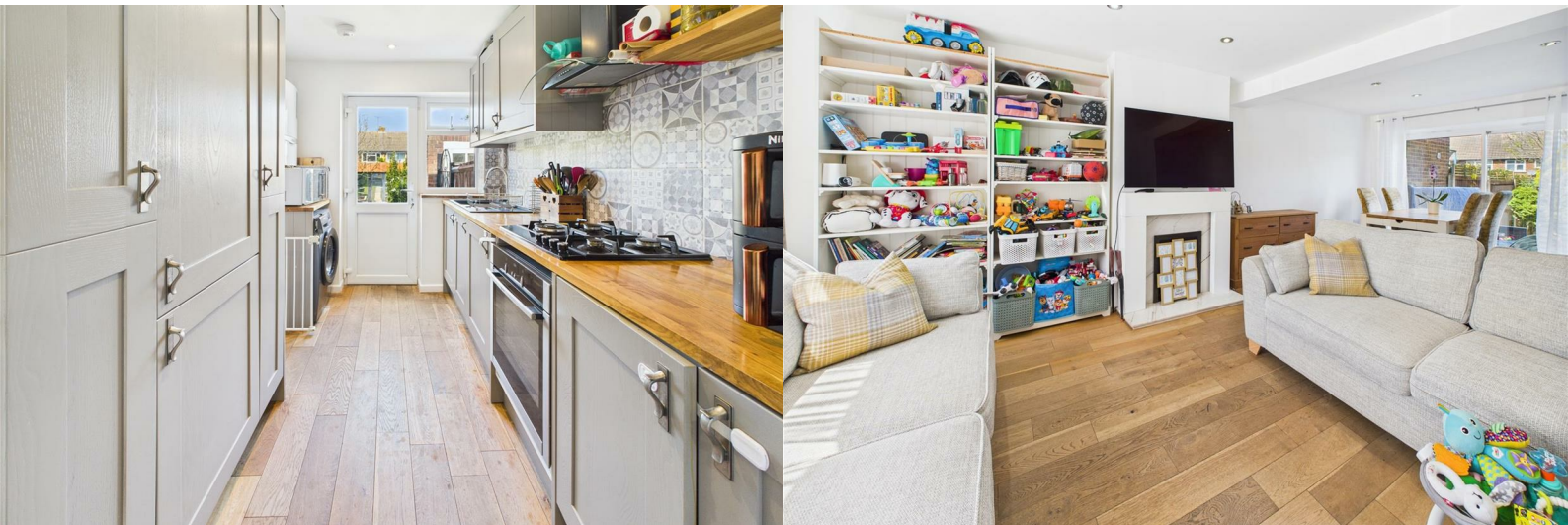




18 Linden Close
Chelmsford, CM2 9JQ

Guide price £410,000



18 Linden Close

Chelmsford, CM2 9JQ

Guide price £410,000



Entrance Hall

12'2 x 5'7 (3.71m x 1.70m)

Entrance door, Stairs to first floor, Oak flooring.

Kitchen

10'3 x 7'8 (3.12m x 2.34m)

A range of fitted storage cupboards, integrated fridge/freezer and electric oven. Space and plumbing for washing machine. Work surfaces incorporates a sink unit with mixer taps and a gas hob with extractor hood over.

Lounge/Diner

22'9 x 11'6 (6.93m x 3.51m)

Window to front, doors to rear. Oak flooring, feature fireplace.

First Floor

Landing

5'11 x 3'7 (1.80m x 1.09m)

Window to side, stairs to ground floor, access to loft.

Bedroom One

12'6 x 11' (3.81m x 3.35m)

Window to front, Oak flooring.

Bedroom Two

10'11 x 9'11 (3.33m x 3.02m)

Window to rear, Oak flooring.

Bedroom Three

9'5 x 6'2 (2.87m x 1.88m)

Window to front, Oak flooring.

Bathroom

6'3 x 5'4 (1.91m x 1.63m)

Window to rear. Panelled bath with shower over, vanity wash hand basin, tiled walls.

Exterior

Front

Block Paved Driveway providing ample off road parking.

Garage

Rear Garden

A paved patio area, remainder laid to lawn, gate to side, door to garage.

Detached Log Cabin/Workshop

Power and light connected, ideal home office or workshop.



Road Map



Hybrid Map



Terrain Map



Floor Plan



Viewing

Please contact our Chelmsford Office on 01245 330764 if you wish to arrange a viewing appointment for this property or require further information.

Energy Efficiency Graph



These particulars, whilst believed to be accurate are set out as a general outline only for guidance and do not constitute any part of an offer or contract. Intending purchasers should not rely on them as statements of representation of fact, but must satisfy themselves by inspection or otherwise as to their accuracy. No person in this firm's employment has the authority to make or give any representation or warranty in respect of the property.