



## 27 Albyns

Langdon Hills, Basildon, SS16 6LH

Offers in excess of £250,000



# 27 Albyns

Langdon Hills, Basildon, SS16 6LH

Offers in excess of £250,000



## Entrance

Entrance door with stairs to the upper and lower levels.  
Storage cupboards.

## Bedroom Three

12'8 x 5'5 (3.86m x 1.65m)

A single bedroom with a double glazed window to the front. Radiator.

## WC

Close coupled WC

## Bathroom

Panelled bath with shower over, wash hand basin and tiled walls. double glazed window to the front.

## Upper Level

### Lounge/Diner

An 'L' shaped room with double glazed patio doors and window to the rear. Radiator.

## Kitchen

12' x 10' (3.66m x 3.05m)

A range of fitted storage cupboards with space and plumbing for a washing machine, fridge, freezer and electric oven.

## Lower Level

### Bedroom One

16' x 9' (4.88m x 2.74m)

A Double bedroom with a storage cupboard and a double glazed window to the rear. Radiator.

### Bedroom Two

14' x 9' (4.27m x 2.74m)

A double bedroom with a door to the rear, radiator.

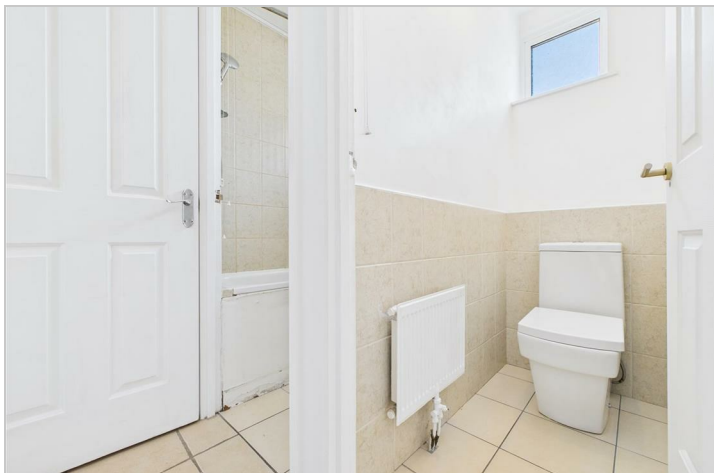
## Exterior

### Front Garden

### Rear Garden

A split level decked garden area with gate to the rear.





Road Map



Hybrid Map



Terrain Map



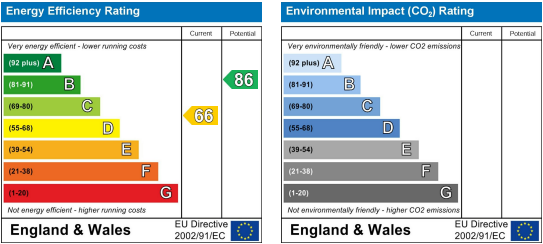
Floor Plan



Viewing

Please contact our Chelmsford Office on 01245 330764 if you wish to arrange a viewing appointment for this property or require further information.

Energy Efficiency Graph



These particulars, whilst believed to be accurate are set out as a general outline only for guidance and do not constitute any part of an offer or contract. Intending purchasers should not rely on them as statements of representation of fact, but must satisfy themselves by inspection or otherwise as to their accuracy. No person in this firm's employment has the authority to make or give any representation or warranty in respect of the property.