



## 2 Middlemead

West Hanningfield, Chelmsford, CM2 8UT

Asking price £450,000



A three bedroom semi detached family home located within the very much sought after location of West Hanningfield. The property offers THREE good size bedrooms, two reception rooms and a modern finish throughout. Externally a GARAGE and great sized garden is on offer. Extra benefits include no onward chain.



Entrance Hallway

Living Room 12'11 x 12'5 (3.94m x 3.78m)  
Double glazed window to front, radiator.

Dining Room 10'10 x 10'10 (3.30m x 3.30m)  
Double glazed window to rear, radiator.

Kitchen 11'8 x 8'9 (3.56m x 2.67m)  
A range of fitted storage cupboards. Space and plumbing for washing machine, fridge/freezer and oven.

First Floor

Landing  
Stairs to ground floor. Access to loft

Bedroom One 10'9 x 10'7 (3.28m x 3.23m)  
Double glazed window to front, radiator, fitted wardrobes.

Bedroom Two 13'3 x 10'10 (4.04m x 3.30m)  
Double Glazed window to rear, radiator

Bedroom Three 9'2 x 7'5 ( 2.79m x 2.26m)  
Double glazed window to front, radiator

Bathroom  
Double glazed window to rear. Bath with shower over, low level WC, wash hand basin, radiator.

Exterior

Front Garden  
Small lawned area, side access.

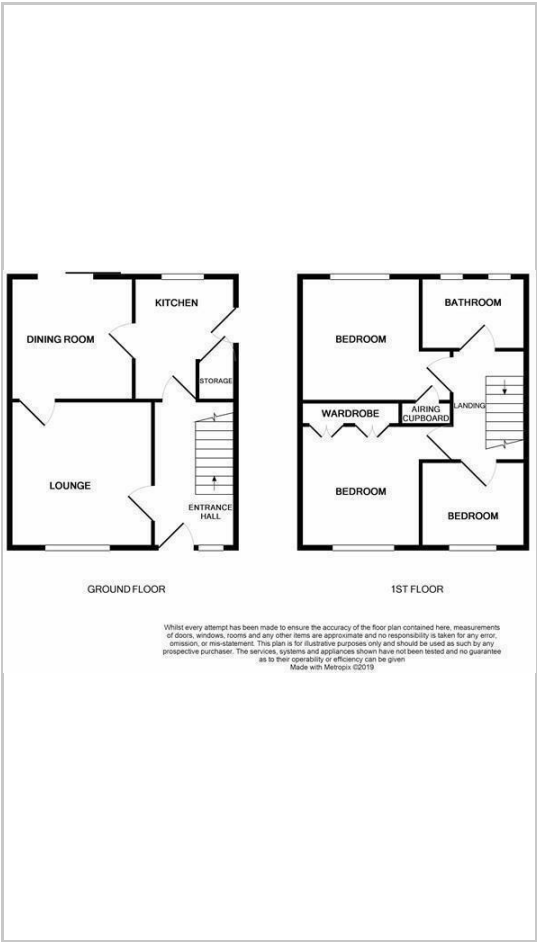
Rear Garden  
A good sized garden, mainly laid to lawn

Garage in Block  
Up and over door.

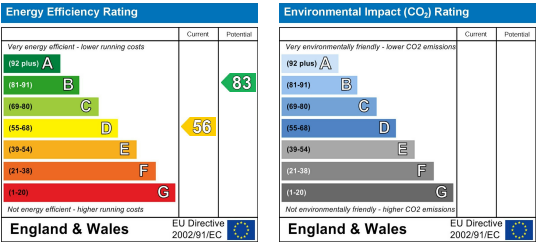
Area Map



Floor Plans



Energy Efficiency Graph



These particulars, whilst believed to be accurate are set out as a general outline only for guidance and do not constitute any part of an offer or contract. Intending purchasers should not rely on them as statements of representation of fact, but must satisfy themselves by inspection or otherwise as to their accuracy. No person in this firms employment has the authority to make or give any representation or warranty in respect of the property.