



10 Rose Glen

Chelmsford, CM2 9EN

Asking price £390,000



10 Rose Glen

Chelmsford, CM2 9EN

Asking price £390,000



Entrance Hall

16'8 x 5'11 (5.08m x 1.80m)

A bright and airy hallway with storage and stairs to the first floor.

Living Room

12'11 x 10'8 (3.94m x 3.25m)

A lovely room to relax in with a window to the front and laminate flooring.

Kitchen/Diner

17' x 9'7 (5.18m x 2.92m)

Offering a range of storage units with an integrated electric oven, there's space and plumbing for the Fridge/freezer, washing machine and dishwasher. The room offers enough space for a dining table overlooking the rear garden.

First Floor

Landing

Access to the loft, stairs to ground floor.

Bedroom One

13'2 x 10'4 (4.01m x 3.15m)

A double bedroom with a window to front.

Bedroom Two

10'4 x 9'10 (3.15m x 3.00m)

A double bedroom with a window to the rear.

Bedroom Three

8'7 x 6'3 (2.62m x 1.91m)

A single bedroom with a window to the front.

Family Bathroom

7'9 x 6' (2.36m x 1.83m)

A white bathroom suite comprising a bath with shower over, close coupled WC and wash hand basin. Tiled walls and heated towel rail.

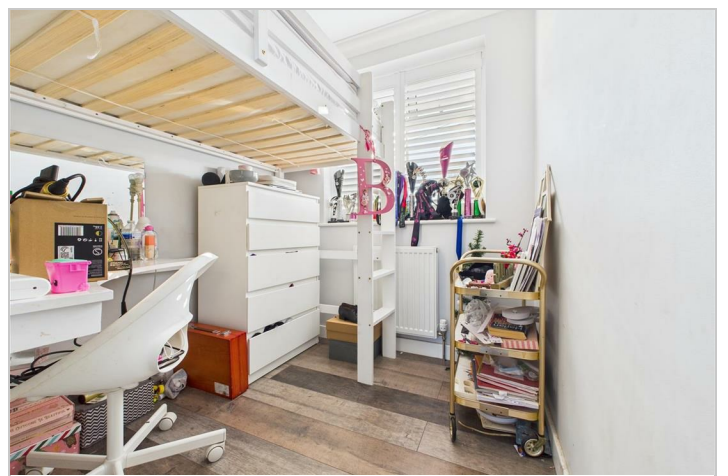
Exterior

Off Road Parking

Hardstanding providing off road parking for two cars.

Rear Garden

A great sized garden with a paved patio area, remainder laid to lawn.



Road Map



Hybrid Map



Terrain Map



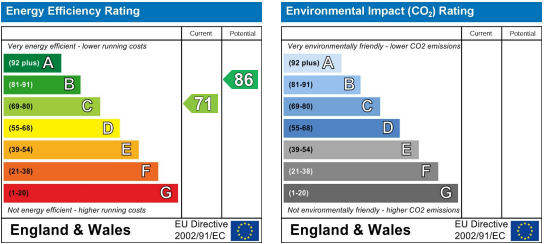
Floor Plan



Viewing

Please contact our Chelmsford Office on 01245 330764 if you wish to arrange a viewing appointment for this property or require further information.

Energy Efficiency Graph



These particulars, whilst believed to be accurate are set out as a general outline only for guidance and do not constitute any part of an offer or contract. Intending purchasers should not rely on them as statements of representation of fact, but must satisfy themselves by inspection or otherwise as to their accuracy. No person in this firms employment has the authority to make or give any representation or warranty in respect of the property.