

KILN & LODGE

ESTATE AGENTS : REDEFINED



61 Norfolk Road, London, E6 2NH

Nestled in the heart of East Ham, this charming mid-terrace house on Norfolk Road offers a delightful blend of character and modern living.

With two well-proportioned bedrooms, this home is perfect for small families, couples, or even as a savvy investment opportunity. The property features a spacious reception room, ideal for entertaining guests or enjoying quiet evenings in.

One of the standout features of this property is its central location. Residents will appreciate the ease of access to local amenities, shops, and parks, all within a short stroll. Furthermore, the proximity to the Underground station makes commuting to central London and beyond exceptionally convenient, appealing to those who work in the city but prefer the tranquillity of suburban living.

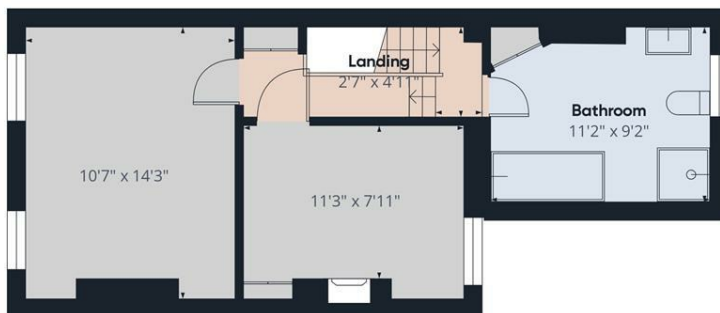
The area is known for its vibrant community and is highly sought after, making this property an attractive option for those looking to settle in a popular neighbourhood. With no chain involved, the process of moving in can be swift and hassle-free, allowing you to start enjoying your new home without delay.

- No Onward Chain
- Two Bedrooms
- Spacious Ground Floor Living
- Close to Underground Station
- Popular Location
- Keys Held for Viewings

£400,000



Floor 0



Floor 1

Approximate total area¹⁰
882.11 ft²

(1) Excluding balconies and terraces

While every attempt has been made to ensure accuracy, all measurements are approximate, not to scale. This floor plan is for illustrative purposes only.

Calculations are based on RICS IPMS 3C standard.

GIRAFFE360

