



16 Becketts

Basildon, SS15 6QP

Asking price £330,000



16 Becketts

, Basildon, SS15 6QP

Asking price £330,000



Entrance Porch

Entrance Door, door to

WC

Low level WC, wash hand basin

Study Area, Reception

12'5 x 8'10 (3.78m x 2.69m)

Stairs to first floor, radiator.

Kitchen

11'8 x 8 (3.56m x 2.44m)

Window and door to rear. Range of fitted units to eye and base level. Space and plumbing for fridge, freezer, washing machine and oven. Work surfaces incorporate sink unit with mixer taps.

Lounge/Diner

22'5 x 10'4 (6.83m x 3.15m)

Window to front and rear, radiator.

Landing

Stairs to ground floor, airing cupboard.

Bedroom One

14'4 x 10'3 (4.37m x 3.12m)

Window to front, radiator.

Bedroom Two

11'6 x 9' (3.51m x 2.74m)

Window to front, radiator.

Bedroom Three

10'2 x 7'10 (3.10m x 2.39m)

window to rear, radiator.

Bathroom

8'7 x 5'7 (2.62m x 1.70m)

Window to rear, panelled bath with shower over. Pedestal wash hand basin, low level WC.

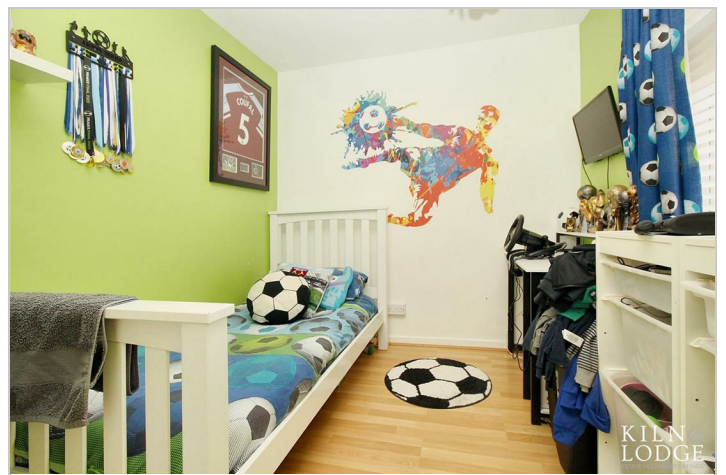
Exterior

Front Garden

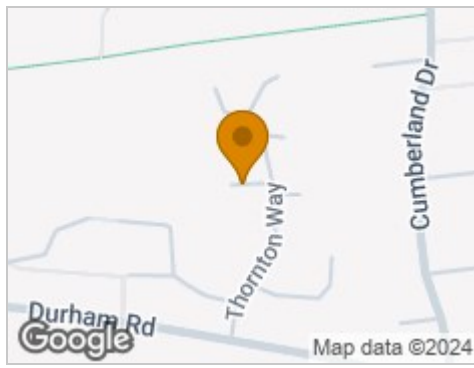
Rear Garden

Commencing with a paved patio and a decked seating area.

Communal Parking



Road Map



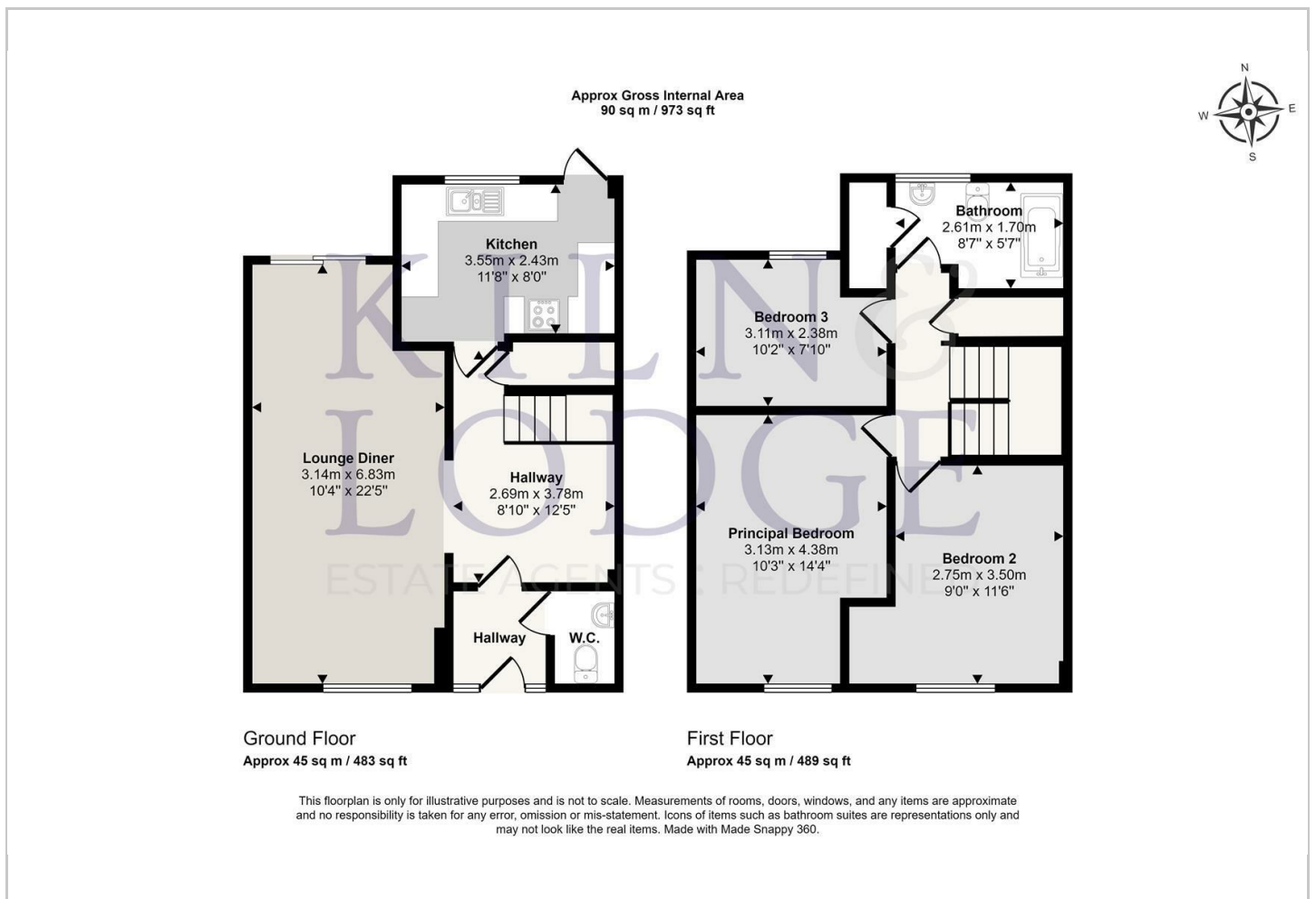
Hybrid Map



Terrain Map



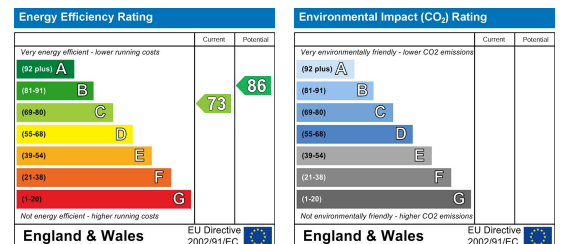
Floor Plan



Viewing

Please contact our Chelmsford Office on 01245 330764 if you wish to arrange a viewing appointment for this property or require further information.

Energy Efficiency Graph



These particulars, whilst believed to be accurate are set out as a general outline only for guidance and do not constitute any part of an offer or contract. Intending purchasers should not rely on them as statements of representation of fact, but must satisfy themselves by inspection or otherwise as to their accuracy. No person in this firm's employment has the authority to make or give any representation or warranty in respect of the property.