



145 Keene Way

Chelmsford, CM2 8NR

Offers in excess of £500,000



145 Keene Way

Chelmsford, CM2 8NR

Offers in excess of £500,000



Entrance Hall

Entrance door, stairs to first floor, radiator. Amtico flooring.

Study

Radiator, Carpet.

Lounge

Window to front, radiator, carpet.

Dining Room

Doors to rear, radiator, 'Amtico' flooring.

Kitchen

Window to rear. Range of fitted storage units, integrated electric oven and fridge/freezer. Work surfaces incorporate sink unit with mixer taps and gas hob with extractor over. Amtico flooring.

Utility Room

Window and door to rear, range of storage cupboards. Wall mounted boiler. Space and plumbing for washing machine, tumble dryer, fridge, freezer and dishwasher.

Shower Room

Shower Cubicle, low level WC, Wash hand basin, radiator.

Landing

Stairs to ground floor, access to loft. Carpet.

Bedroom One

Window to front, radiator, fitted wardrobes. Carpet.

Bedroom Two

Window to front, radiator. Carpet.

Bedroom Three

Window to rear, radiator, carpet.

Bedroom Four

Window to rear, radiator, carpet.

Family Bathroom

Window to rear, panelled bath, wash hand basin close coupled wc, Radiator.

Exterior

Driveway

Hardstanding for numerous cars, brick retaining wall.

Rear Garden

Paved patio area, lawn, brick built storage shed.



Road Map



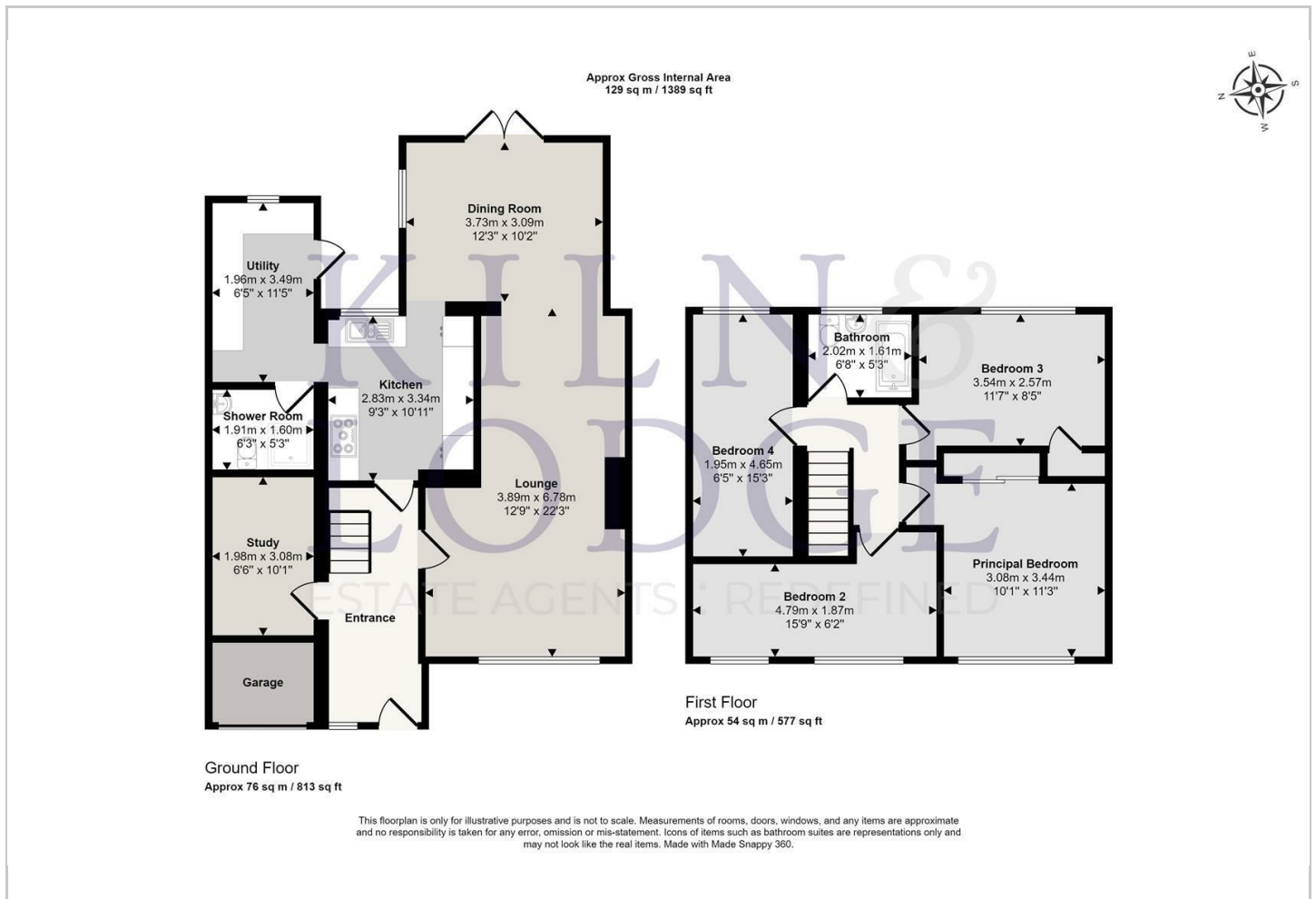
Hybrid Map



Terrain Map



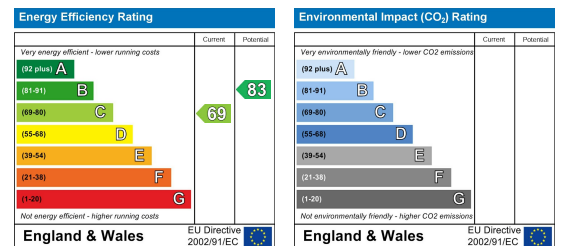
Floor Plan



Viewing

Please contact our Chelmsford Office on 01245 330764 if you wish to arrange a viewing appointment for this property or require further information.

Energy Efficiency Graph



These particulars, whilst believed to be accurate are set out as a general outline only for guidance and do not constitute any part of an offer or contract. Intending purchasers should not rely on them as statements of representation of fact, but must satisfy themselves by inspection or otherwise as to their accuracy. No person in this firm's employment has the authority to make or give any representation or warranty in respect of the property.