



53 Dennington Crescent

Basildon, SS14 2FF

Offers in excess of £420,000



53 Dennington Crescent

Basildon, SS14 2FF

Offers in excess of £420,000



Entrance Hall

Entrance door, stairs to first floor, radiator.

WC

Close coupled WC, wash hand basin, radiator.

Second Reception/Bedroom Four

9'3 x 9'2 (2.82m x 2.79m)

Window to front, radiator.

Living Room

16'8 x 12'8 (5.08m x 3.86m)

Open to rear, radiator, storage cupboard.

Kitchen

16'5 x 9'7 (5.00m x 2.92m)

Window and door to rear. Range of fitted units to eye and base level. Integrated electric double oven and fridge/freezer. Space and plumbing for washing machine. Work surfaces incorporate sink unit with mixer taps and gas hob with extractor hood over.

Landing

Stairs to ground floor, access to loft, airing cupboard.

Bedroom One

9'10 x 9'8 (3.00m x 2.95m)

Window to rear, radiator.

Ensuite

Shower cubicle, close coupled WC, wash hand basin, radiator.

Bedroom Two

12'7 x 6'8 (3.84m x 2.03m)

Window to front, radiator.

Bedroom Three

9' x 7'3 (2.74m x 2.21m)

Window to front, radiator, fitted wardrobes.

Family Bathroom

6'5 x 6 (1.96m x 1.83m)

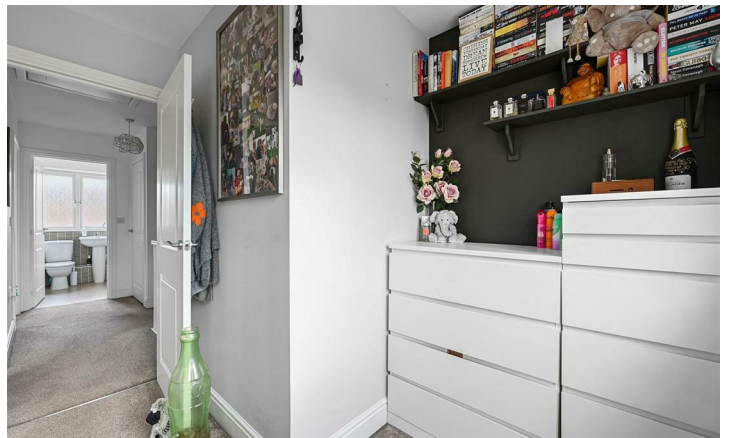
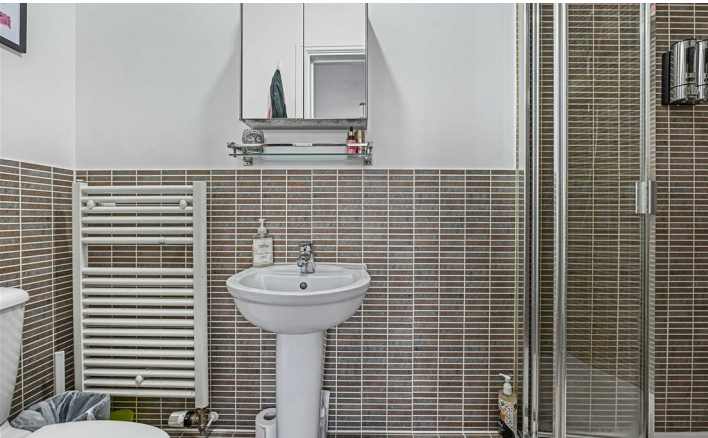
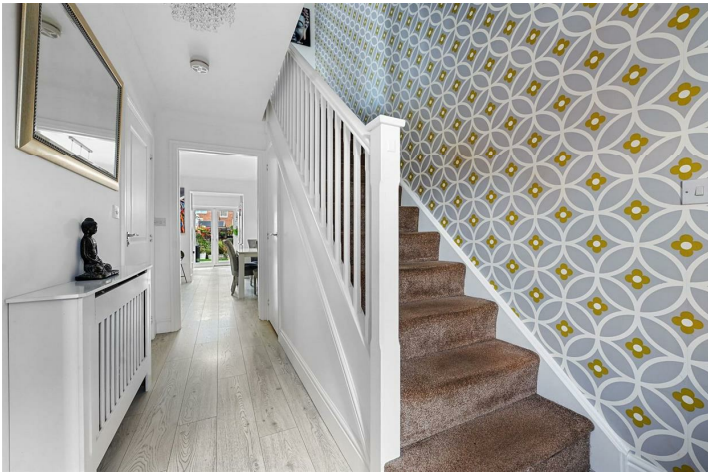
Window to rear, close coupled WC, wash hand basin, walk in shower cubicle.

Frontage

Flowers and Shrubs, Side Access.

Rear Garden

Decked area, remainder laid to lawn, fencing to boundaries, timber shed.



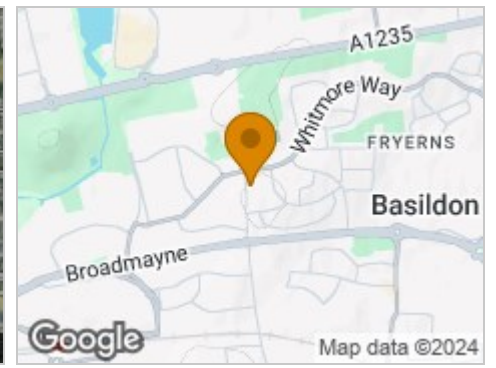
Road Map



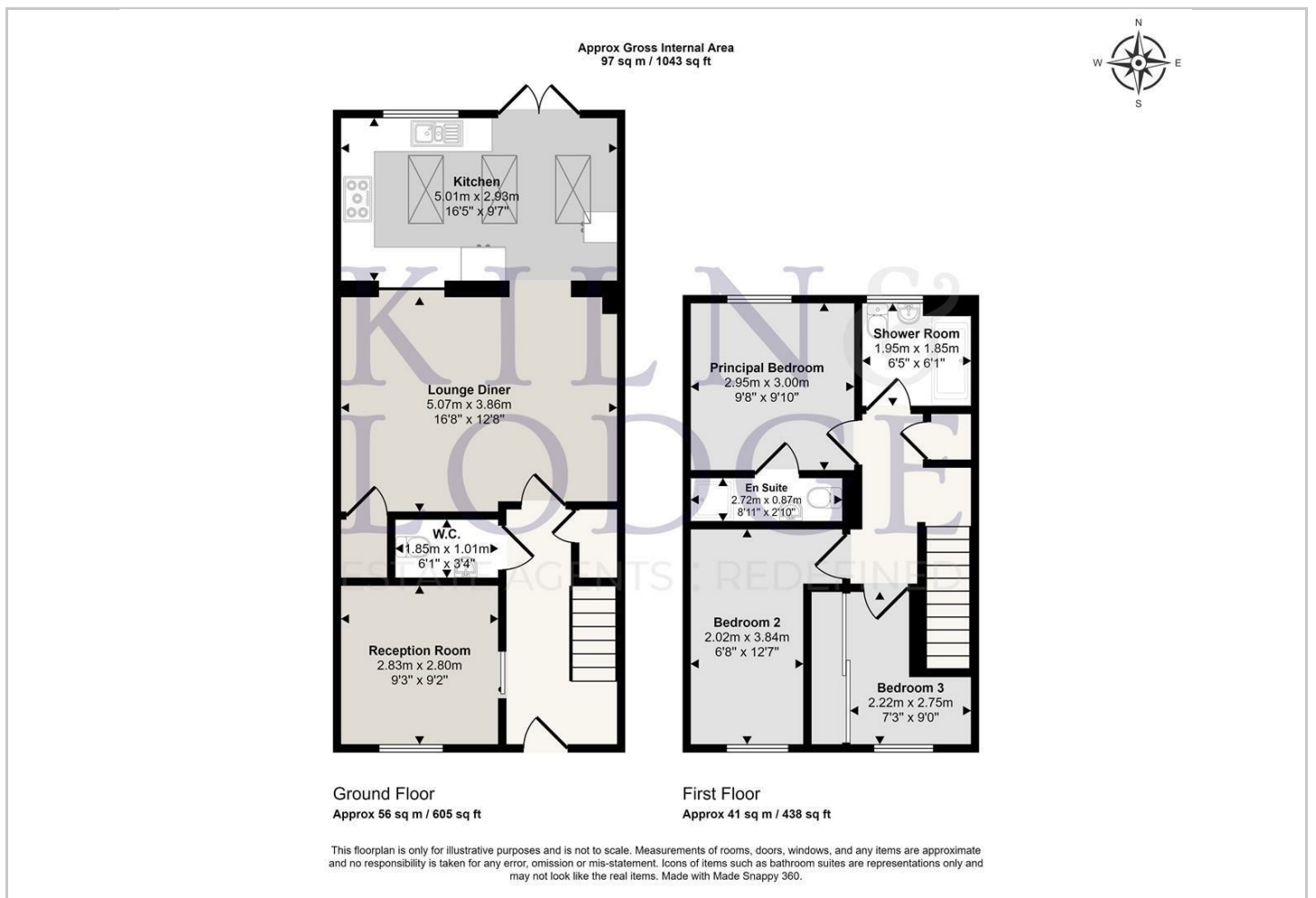
Hybrid Map



Terrain Map



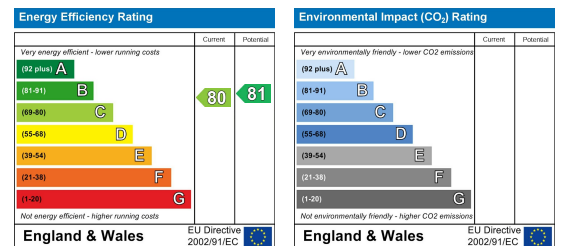
Floor Plan



Viewing

Please contact our Chelmsford Office on 01245 330764 if you wish to arrange a viewing appointment for this property or require further information.

Energy Efficiency Graph



These particulars, whilst believed to be accurate are set out as a general outline only for guidance and do not constitute any part of an offer or contract. Intending purchasers should not rely on them as statements of representation of fact, but must satisfy themselves by inspection or otherwise as to their accuracy. No person in this firm's employment has the authority to make or give any representation or warranty in respect of the property.