



14 Skylark Walk

Chelmsford, CM2 8BB

Guide price £350,000



14 Skylark Walk

, Chelmsford, CM2 8BB

Guide price £350,000



Entrance Porch

Entrance door, window to side.

Living Room

14'7 x 14'5 (4.45m x 4.39m)

Window to front, spot lights, stairs to first floor, open to:

Dining Room

12'9 x 8'3 (3.89m x 2.51m)

Window and doors to rear, radiator, open to:

Kitchen

12'10 x 6'6 (3.91m x 1.98m)

Window to rear. Range of fitted storage units to eye and base level. Space and plumbing for washing machine, fridge/freezer and dishwasher. Integrated electric oven. Work surfaces incorporate sink unit with mixer taps and the gas hob with extractor over.

First Floor

Landing

Stairs to ground floor, access to loft.

Bathroom

7'7 x 6' (2.31m x 1.83m)

Window to rear. A re-fitted suite comprising a dual ceramic sink unit, a LED mirror, panelled bath with shower over, close coupled WC, fully tiled. Radiator.

Bedroom One

14'2 x 9' (4.32m x 2.74m)

Window to front, built in storage cupboard, radiator.

Bedroom Two

9'10 x 7'5 (3.00m x 2.26m)

Window to rear, built in storage, radiator.

Bedroom Three

8'11 x 6' (2.72m x 1.83m)

Window to front, built in storage, radiator.

Exterior

Front

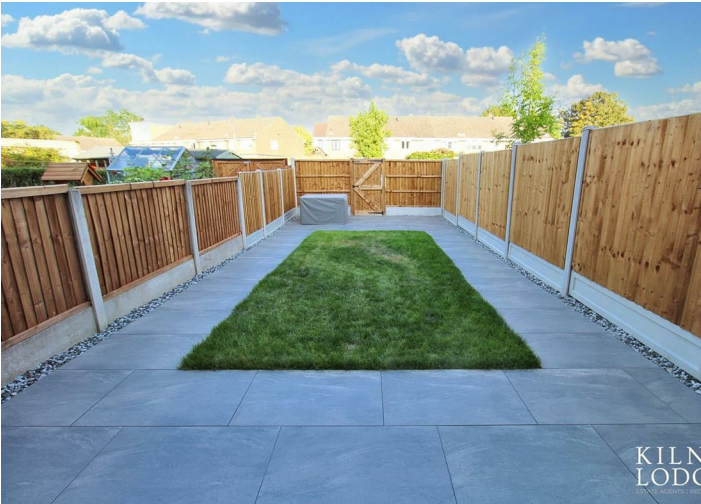
Lawned Area, with a fruit tree.

Landscaped Rear Garden

Paved patio area, remainder laid to lawn, rear gate to:

Off Road Parking

Parking for two cars.



Road Map



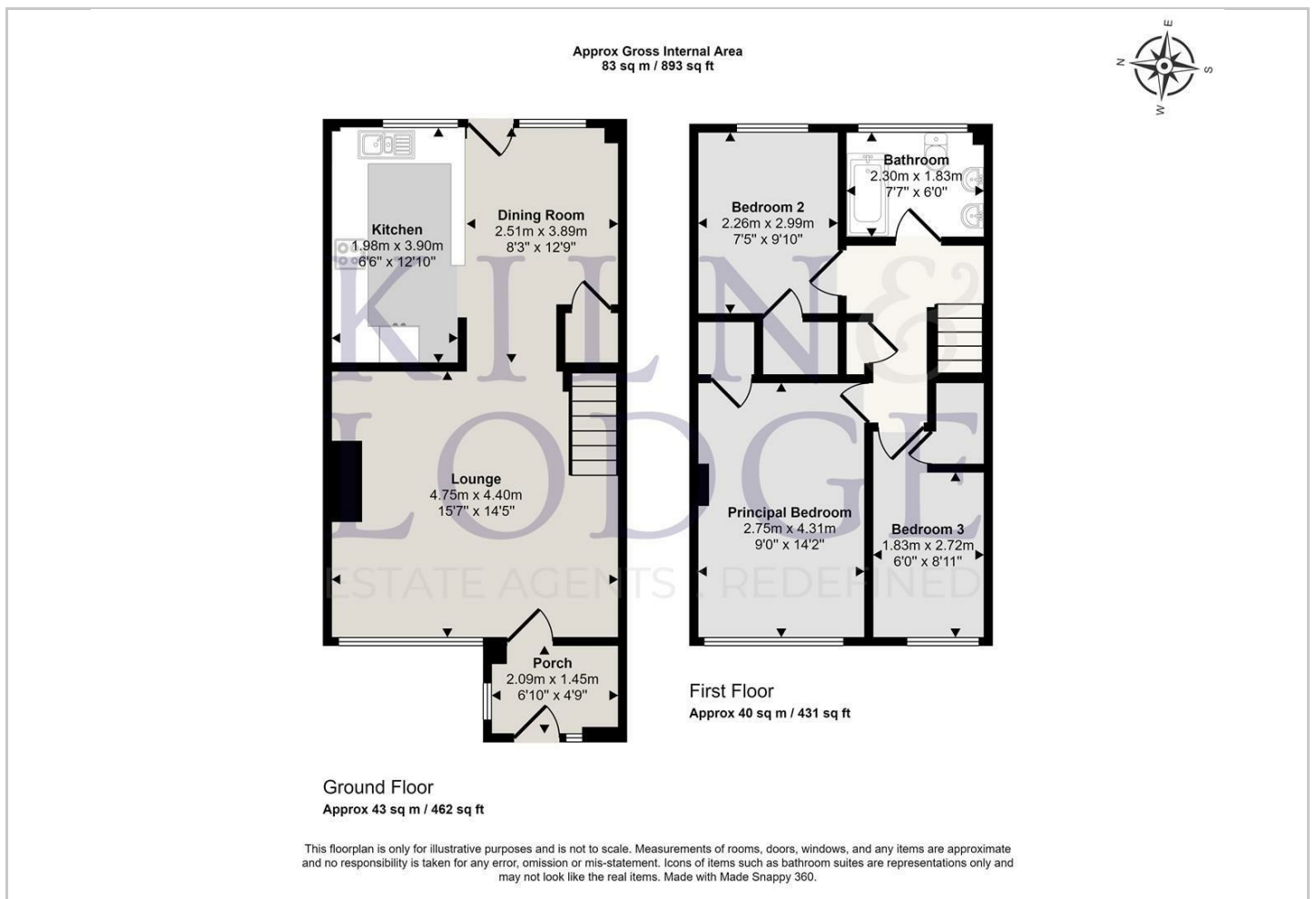
Hybrid Map



Terrain Map



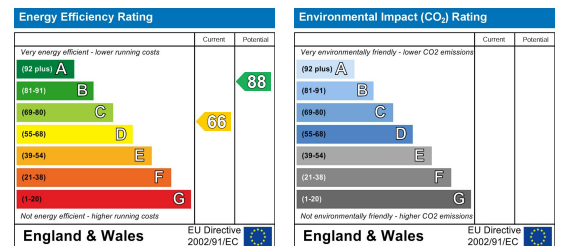
Floor Plan



Viewing

Please contact our Chelmsford Office on 01245 330764 if you wish to arrange a viewing appointment for this property or require further information.

Energy Efficiency Graph



These particulars, whilst believed to be accurate are set out as a general outline only for guidance and do not constitute any part of an offer or contract. Intending purchasers should not rely on them as statements of representation of fact, but must satisfy themselves by inspection or otherwise as to their accuracy. No person in this firm's employment has the authority to make or give any representation or warranty in respect of the property.