



KILN &  
LODGE

## 1 Dove Lane

Chelmsford, CM2 8AX

Asking price £450,000



KILN &  
LODGE



KILN &  
LODGE



# 1 Dove Lane

Chelmsford, CM2 8AX

Asking price £450,000



Entrance Porch

Hallway

WC

Living Room

13'7 x 11'4 (4.14m x 3.45m)

Window to front, radiator, fireplace.

Dining Room

12'2 x 7'10 (3.71m x 2.39m)

Door to conservatory, door to kitchen, radiator.

Kitchen

9'10 x 8'11 (3.00m x 2.72m)

Window to side. Range of fitted storage units to eye and base level. Space and plumbing for oven. Work surfaces incorporate sink unit with mixer taps.

Utility Room

6'6 x 5'7 (1.98m x 1.70m)

Window to rear, door to conservatory. Space and plumbing for washing machine and tumble dryer.

Conservatory

Window to side and rear, door to rear.

First Floor

Landing

Window to side, stairs to ground floor.

Bedroom One

13'1 x 10'9 (3.99m x 3.28m)

Window to front, fitted wardrobes, radiator.

Bedroom Two

10'3 x 10'3 (3.12m x 3.12m)

Window to rear, radiator, fitted storage.

Bedroom Three

10' x 7'1 (3.05m x 2.16m)

Window to front, radiator, storage cupboard.

Bathroom

7'9 x 5'5 (2.36m x 1.65m)

Window to rear. Shower cubicle, low level WC, wash hand basin.

Exterior

Frontage

Lawned area with brick retaining wall.

Garage & Parking

Up and over door. Ample parking to the front.

Rear Garden

Patio area, remainder laid to lawn, Pergola, Apple Tree, fencing to boundaries.







Road Map



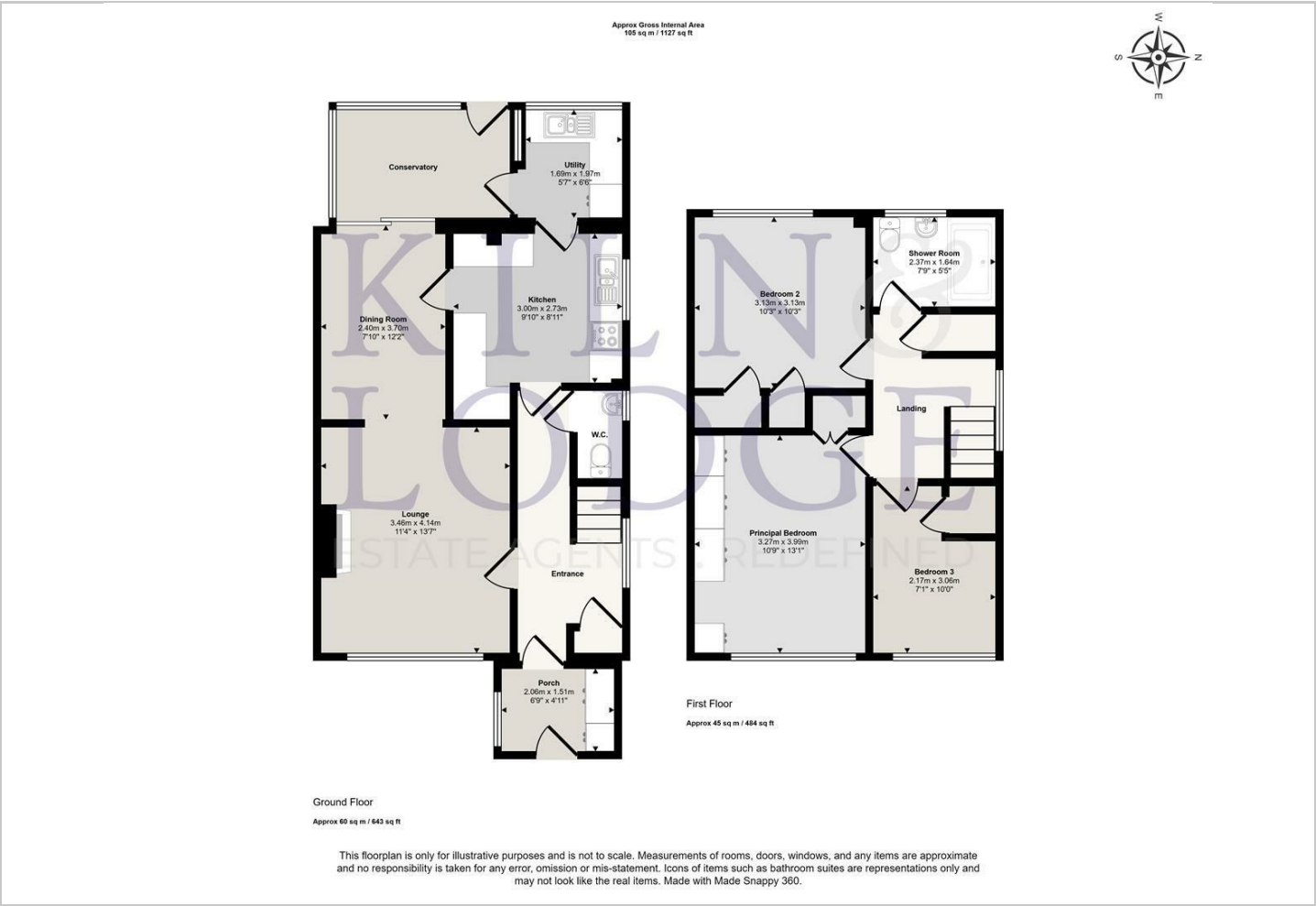
Hybrid Map



Terrain Map



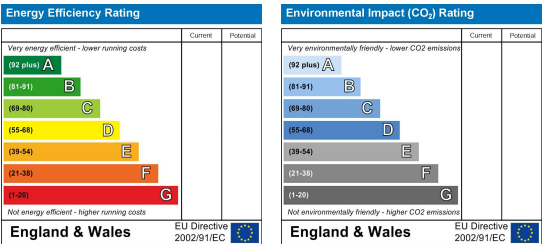
Floor Plan



Viewing

Please contact our Chelmsford Office on 01245 330764 if you wish to arrange a viewing appointment for this property or require further information.

Energy Efficiency Graph



These particulars, whilst believed to be accurate are set out as a general outline only for guidance and do not constitute any part of an offer or contract. Intending purchasers should not rely on them as statements of representation of fact, but must satisfy themselves by inspection or otherwise as to their accuracy. No person in this firms employment has the authority to make or give any representation or warranty in respect of the property.