



3 King Edwards Road

South Woodham Ferrers, Chelmsford, CM3 5PQ

Asking price £800,000



3 King Edwards Road

South Woodham Ferrers, Chelmsford, CM3 5PQ

Asking price £800,000



ACCOMMODATION

Ground Floor

Entrance Hall

Bedroom Four

13'8 x 12'3 (4.17m x 3.73m)

Shower Room

8'9 x 7'10 (2.67m x 2.39m)

Kitchen/Family Room

24'8 x 18'1 (7.52m x 5.51m)

Utility Room

11'4 x 7'4 (3.45m x 2.24m)

Dining Room

17'6 x 12'9 (5.33m x 3.89m)

Living Room

19'8 x 14'8 (5.99m x 4.47m)

Third Reception

13'4 x 12'11 (4.06m x 3.94m)

First Floor

Landing

Bedroom One

21'1 max x 17' max (6.43m max x 5.18m max)

Bedroom Two

18'8 x 9'11 (5.69m x 3.02m)

Bedroom Three

15'5 x 9'5 (4.70m x 2.87m)

Bedroom Five

15'8 x 12'2 (4.78m x 3.71m)

Bedroom Six

9'5 x 7'6 (2.87m x 2.29m)

Family Bathroom

Exterior

Front

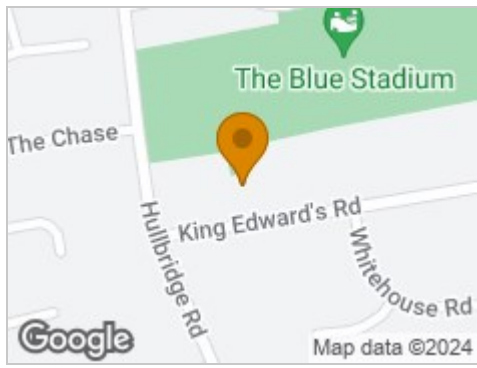
Ample off street parking. Planning Permission Granted for a detached garage.

Rear Garden

Large decked area with a shed and hot tub. Remainder laid to lawn. Planning Permission Granted for Self contained annexe/games room.



Road Map



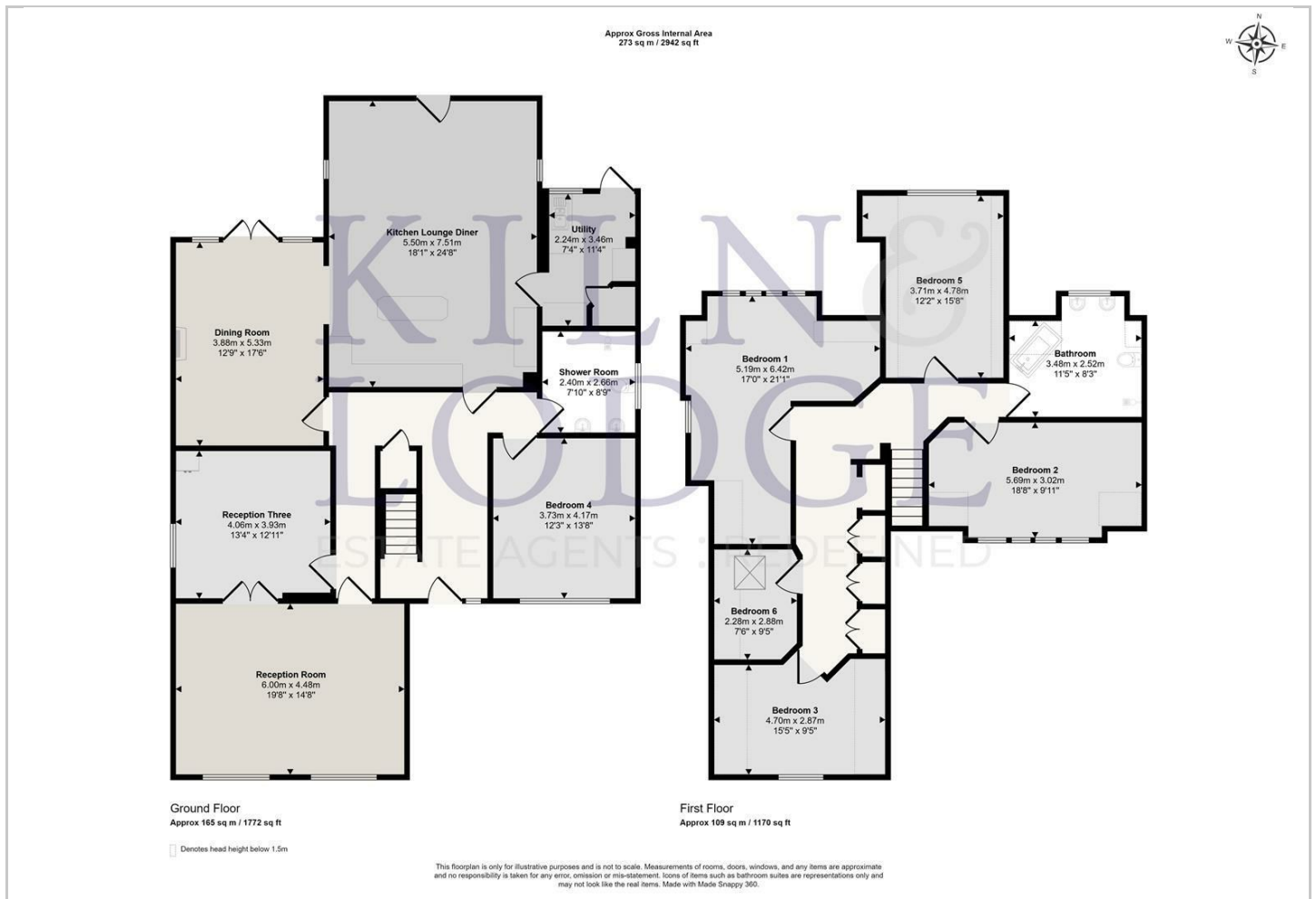
Hybrid Map



Terrain Map



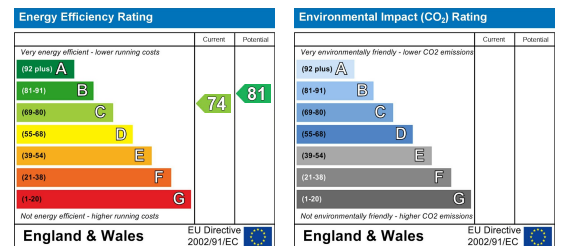
Floor Plan



Viewing

Please contact our Chelmsford Office on 01245 330764 if you wish to arrange a viewing appointment for this property or require further information.

Energy Efficiency Graph



These particulars, whilst believed to be accurate are set out as a general outline only for guidance and do not constitute any part of an offer or contract. Intending purchasers should not rely on them as statements of representation of fact, but must satisfy themselves by inspection or otherwise as to their accuracy. No person in this firm's employment has the authority to make or give any representation or warranty in respect of the property.