

KILN & LODGE

ESTATE AGENTS : REDEFINED



KILN & LODGE
ESTATE AGENTS : REDEFINED

19 Dove Lane

Chelmsford, CM2 8AX

Asking price £415,000



KILN & LODGE
ESTATE AGENTS : REDEFINED

KILN & LODGE
ESTATE AGENTS : REDEFINED

19 Dove Lane

, Chelmsford, CM2 8AX

Asking price £415,000



Entrance Hall

Kitchen

13'5 x 9'8 (4.09m x 2.95m)

Window to front, door to side. Range of storage units. Space and plumbing for washing machine, oven and fridge/freezer. Work surfaces incorporate sink unit.

Lounge/Diner

18'10 x 11'10 (5.74m x 3.61m)

Window to front. fireplace, radiator.

Inner Hallway

Bedroom One

16'7 x 8'9 (5.05m x 2.67m)

Window to rear, radiator. Fitted wardrobes.

Bedroom Two

9'7 x 7'7 (2.92m x 2.31m)

Window to side, radiator.

Bedroom Three/Second Reception

12'11 x 11'4 (3.94m x 3.35m)

Doors to conservatory, radiator. Storage cupboard.

Conservatory

11'3 x 7' (3.43m x 2.13m)

Window to rear and side, doors to garden.4

Shower Room

7'11 x 5'5 (2.41m x 1.65m)

Window to side. Shower cubicle, low level WC, pedestal wash hand basin. Radiator.

Exterior

Frontage

Hardstanding providing off road parking. Mature bushes and shrubs.

Side Access

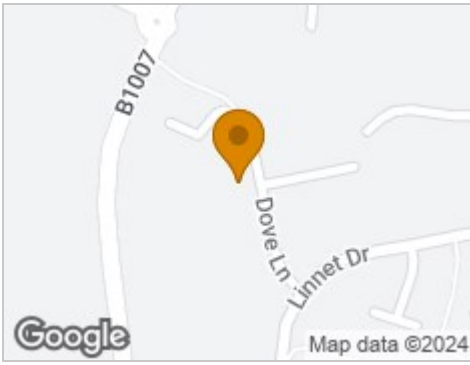
A spacious hardstanding, ideal for addition parking leading to rear garden.

Secluded Rear Garden

Paved patio area leading to a secluded and well stocked garden.



Road Map



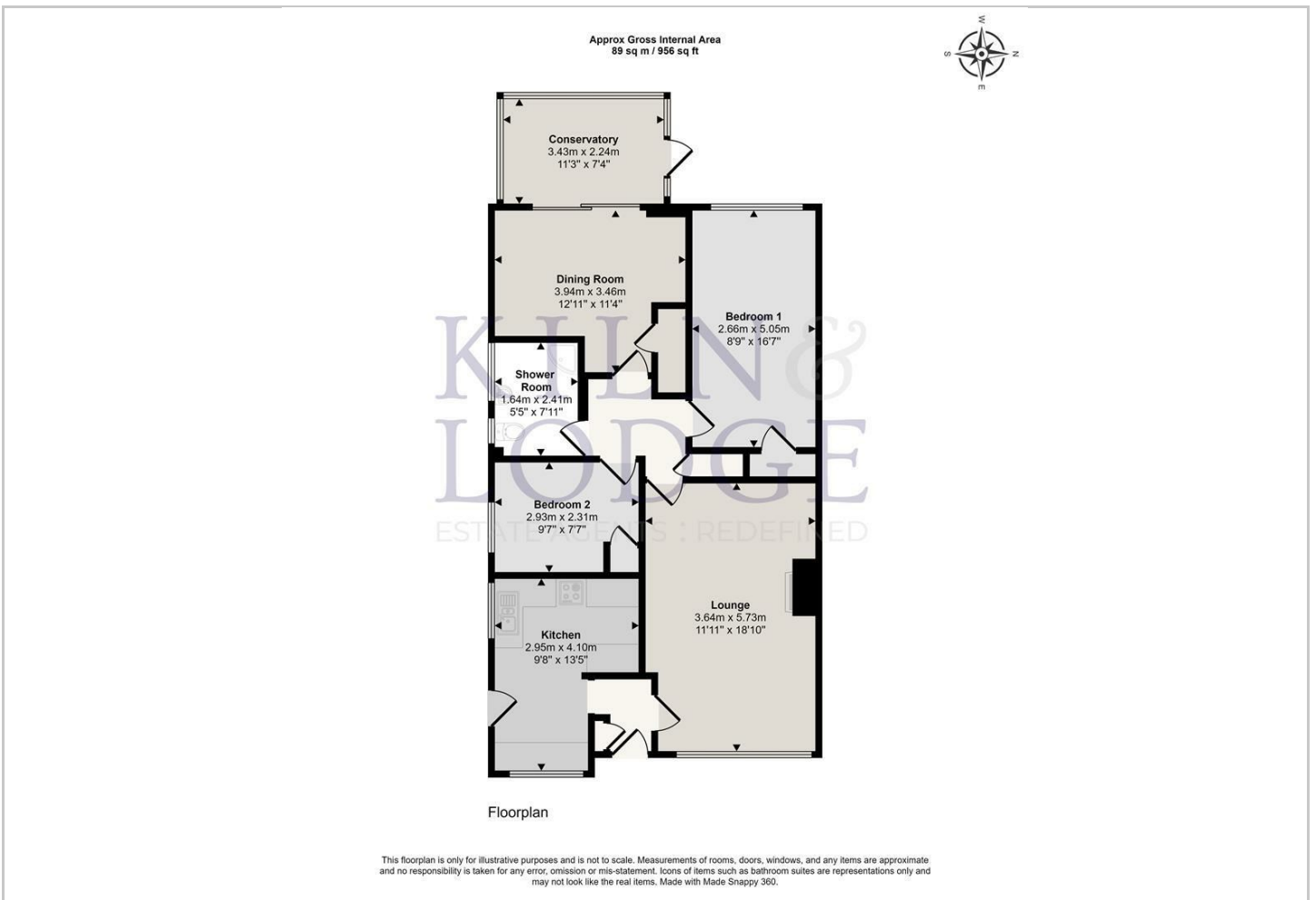
Hybrid Map



Terrain Map



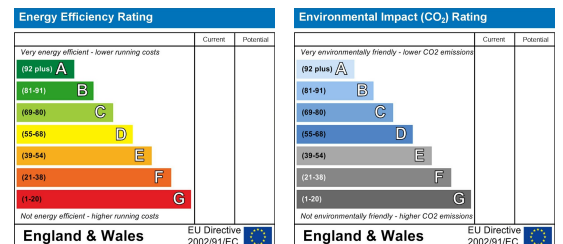
Floor Plan



Viewing

Please contact our Chelmsford Office on 01245 330764 if you wish to arrange a viewing appointment for this property or require further information.

Energy Efficiency Graph



These particulars, whilst believed to be accurate are set out as a general outline only for guidance and do not constitute any part of an offer or contract. Intending purchasers should not rely on them as statements of representation of fact, but must satisfy themselves by inspection or otherwise as to their accuracy. No person in this firm's employment has the authority to make or give any representation or warranty in respect of the property.