

KILN & LODGE

ESTATE AGENTS : REDEFINED



Tillingham Church South Street

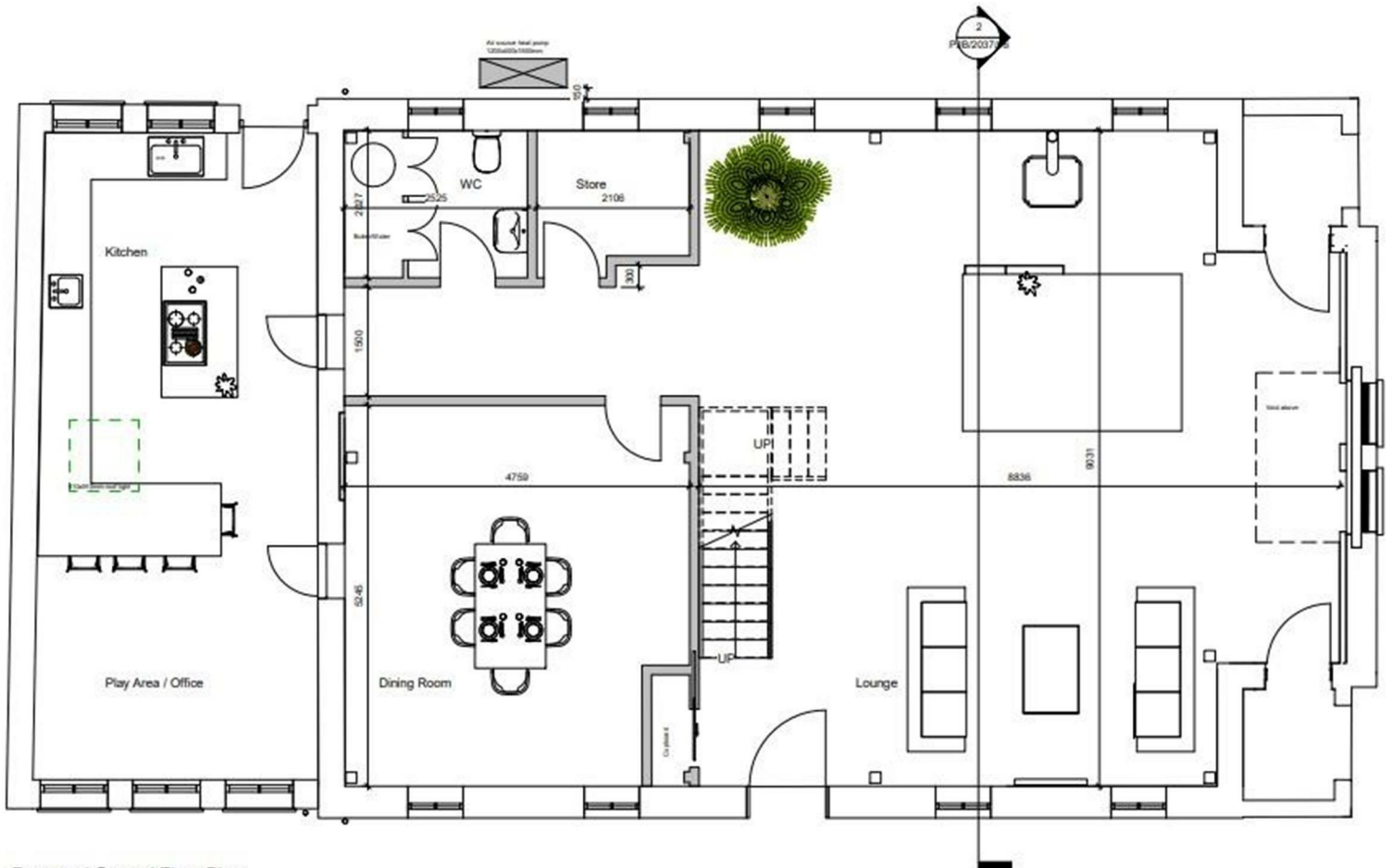
Tillingham, Southminster, CM0 7TH

Asking price £265,000

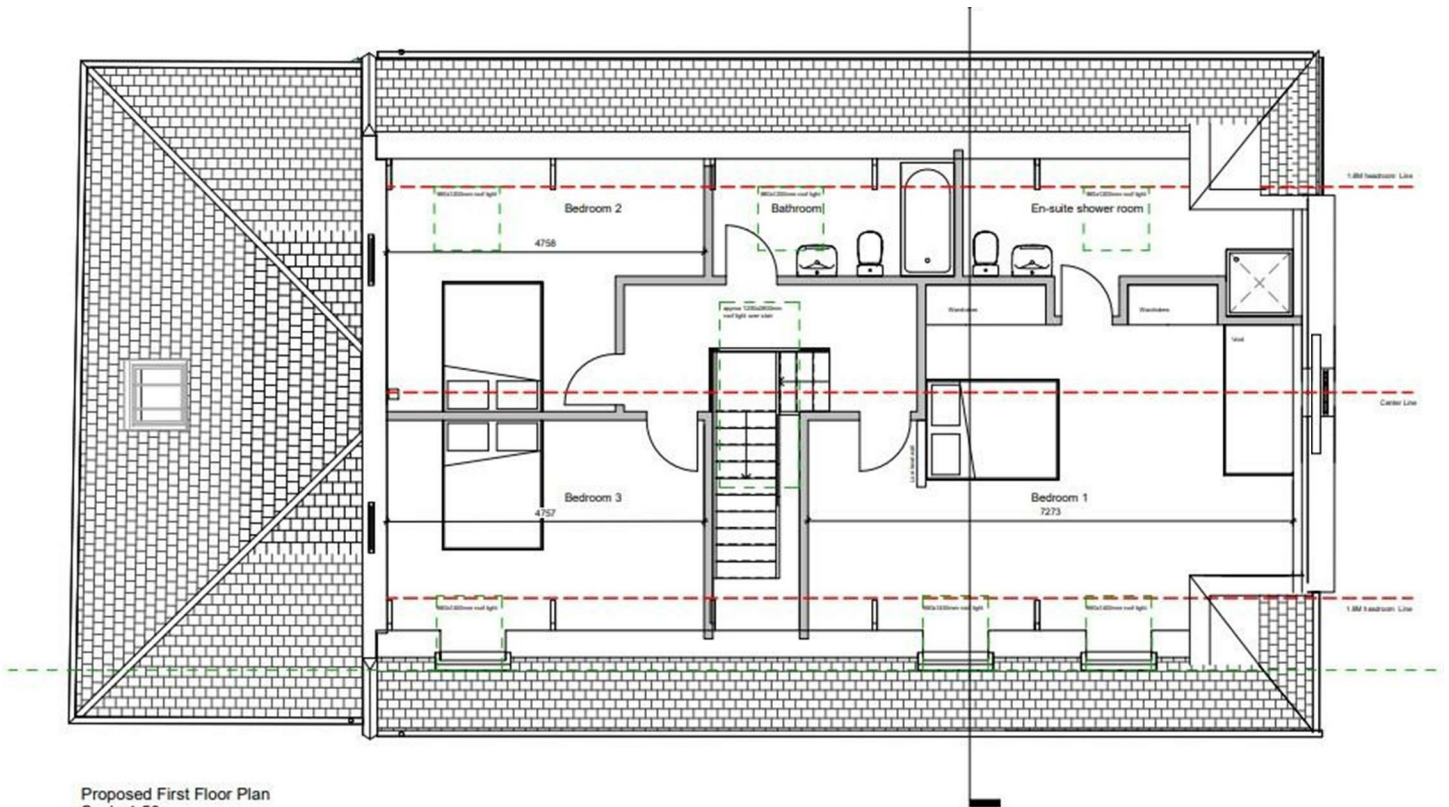
Tillingham Church South Street

Tillingham, Southminster, CM0 7TH

Asking price £265,000



Proposed Ground Floor Plan
Scale 1:50



Road Map



Hybrid Map



Terrain Map



Floor Plan

Approx Gross Internal Area
161 sq m / 1728 sq ft

Church
9.30m x 3.84m
30'6" x 12'7"

Church
9.22m x 11.33m
30'3" x 37'2"

Reception Room
5.76m x 2.11m
18'11" x 6'11"

KILN & LODGE
ESTATE AGENTS : REDEFINE

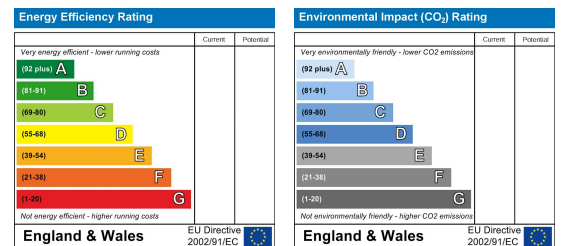
Floorplan

This floorplan is only for illustrative purposes and is not to scale. Measurements of rooms, doors, windows, and any items are approximate and no responsibility is taken for any error, omission or mis-statement. Icons of items such as bathroom suites are representations only and may not look like the real items. Made with Made Snappy 360.

Viewing

Please contact our Chelmsford Office on 01245 330764 if you wish to arrange a viewing appointment for this property or require further information.

Energy Efficiency Graph



These particulars, whilst believed to be accurate are set out as a general outline only for guidance and do not constitute any part of an offer or contract. Intending purchasers should not rely on them as statements of representation of fact, but must satisfy themselves by inspection or otherwise as to their accuracy. No person in this firm's employment has the authority to make or give any representation or warranty in respect of the property.