



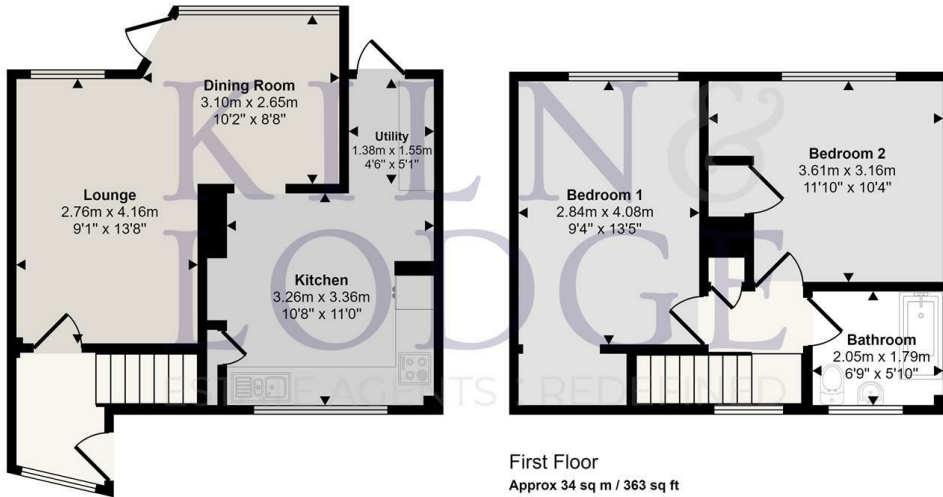
33 Clopton Green, Basildon, SS14 2JE

You will love this immaculate two bedroom home situated within a popular and peaceful location.

The property has been re-decorated to a high standard throughout which also includes an impressive re-fitted kitchen. There's plenty of living space on the ground with the lounge/diner. The first floor provides two double bedrooms and the re-fitted family bathroom. Externally, there's a great sized rear garden to enjoy throughout the year!

- Two double bedrooms
- Good sized garden
- Family bathroom
- Modern kitchen
- High spec throughout
- Close to Shops & Schools
- Views of greensward
- Close to Gloucester Park

Approx Gross Internal Area
72 sq m / 771 sq ft



This floorplan is only for illustrative purposes and is not to scale. Measurements of rooms, doors, windows, and any items are approximate and no responsibility is taken for any error, omission or mis-statement. Icons of items such as bathroom suites are representations only and may not look like the real items. Made with Made Snappy 360.

