

KILN & LODGE

ESTATE AGENTS : REDEFINED



58 Lower Anchor Street, Chelmsford, CM2 0AU

This three bedroom terraced 'Victorian' cottage would be the ideal choice.

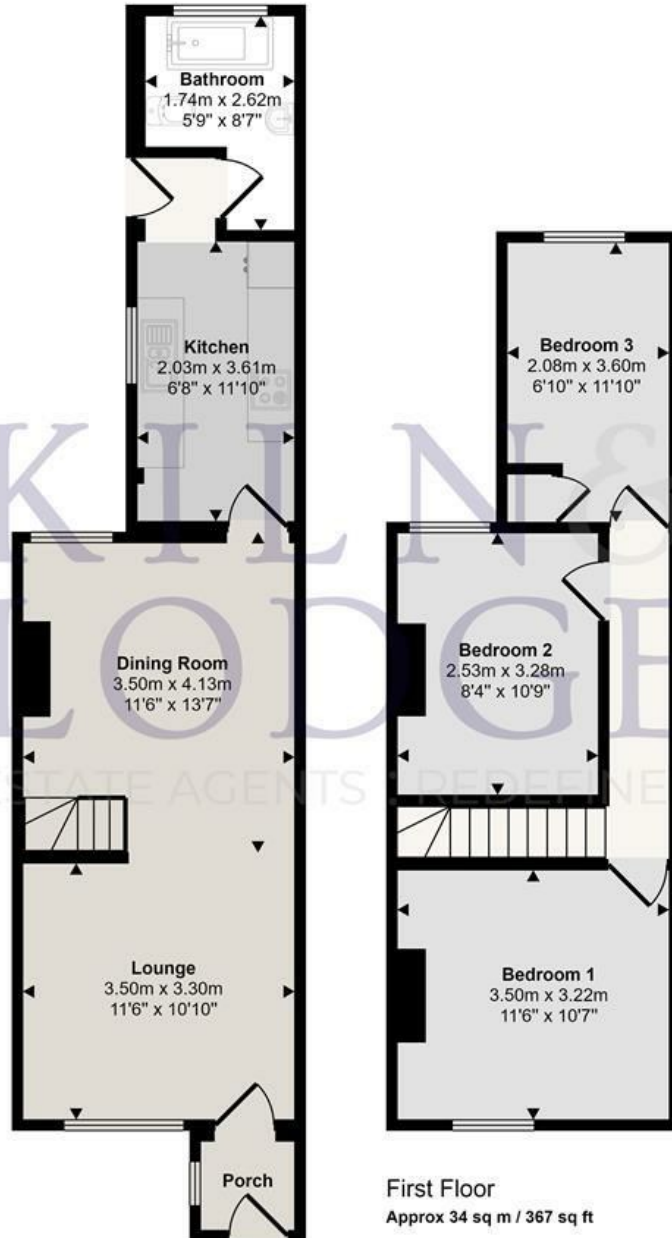
The ground floor offers a living room that opens into the dining room, followed the kitchen and bathroom. The first floor provides the three good sized bedrooms.

Externally, there's a South facing rear garden to enjoy throughout the year.

- No Onward Chain
- Three Bedrooms
- Lounge & Dining Room
- South Facing Garden
- Popular Location
- Keys Held for Viewings

£385,000

Approx Gross Internal Area
74 sq m / 794 sq ft



This floorplan is only for illustrative purposes and is not to scale. Measurements of rooms, doors, windows, and any items are approximate and no responsibility is taken for any error, omission or mis-statement. Icons of items such as bathroom suites are representations only and may not look like the real items. Made with Made Snappy 360.

Energy Efficiency Rating		Current	Potential
Very energy efficient - lower running costs			
(92 plus) A			85
(81-91) B			
(69-80) C			
(55-68) D			
(39-54) E			
(21-38) F			
(1-20) G			
Not energy efficient - higher running costs			
England & Wales		EU Directive 2002/91/EC	

Environmental Impact (CO ₂) Rating		Current	Potential
Very environmentally friendly - lower CO ₂ emissions			
(92 plus) A			85
(81-91) B			
(69-80) C			
(55-68) D			
(39-54) E			
(21-38) F			
(1-20) G			
Not environmentally friendly - higher CO ₂ emissions			
England & Wales		EU Directive 2002/91/EC	