

KILN & LODGE

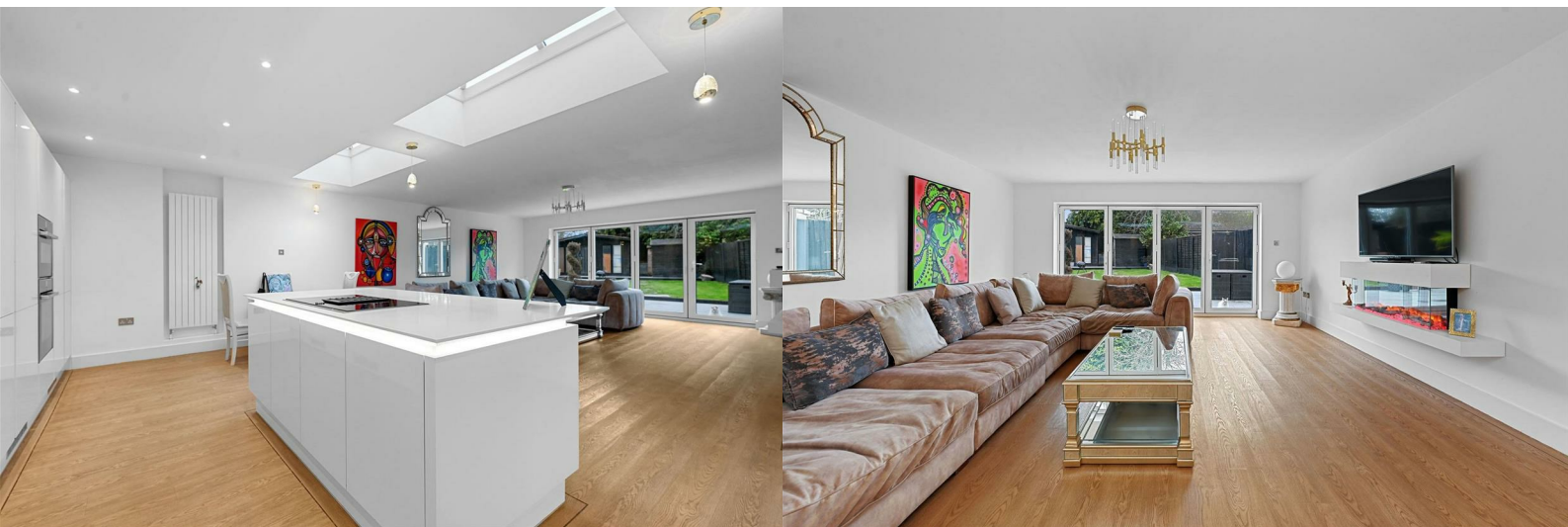
ESTATE AGENTS : REDEFINED



Jasmine Hook End Road

Hook End, Brentwood, CM15 0HB

Offers in excess of £675,000



Jasmine Hook End Road

Hook End, Brentwood, CM15 0HB

Offers in excess of £675,000



Accommodation

Entrance Hall

Entrance door, stairs to first floor.

Family Bathroom

10'6 x 8' (3.20m x 2.44m)

Window to front, panelled bath, low level WC, pedestal wash hand basin, tiled walls and floor.

Bedroom Three

11'2 x 9'2 (3.40m x 2.79m)

Window to front, radiator, storage cupboard.

Open Plan Kitchen/Dining Room

20'3 x 13'9 (6.17m x 4.19m)

A range of modern units fitted to eye and base level, integrated fridge freezer, dishwasher and washing machine. Island providing additional storage along with a Neff Oven, Top Oven with microwave and induction hob with extractor fan. Amtico flooring, underfloor heating.

Living Room

17'1 x 16'8 (5.21m x 5.08m)

By-folding doors to rear, fireplace, Amtico flooring, underfloor heating.

First Floor

Landing

Stairs to ground floor, carpet.

Bedroom One

20'5 x 8'6 (6.22m x 2.59m)

Windows to front, radiator, fitted storage, carpet.

Bedroom Two

16'7 x 9'9 (5.05m x 2.97m)

Window to rear, radiator carpet.

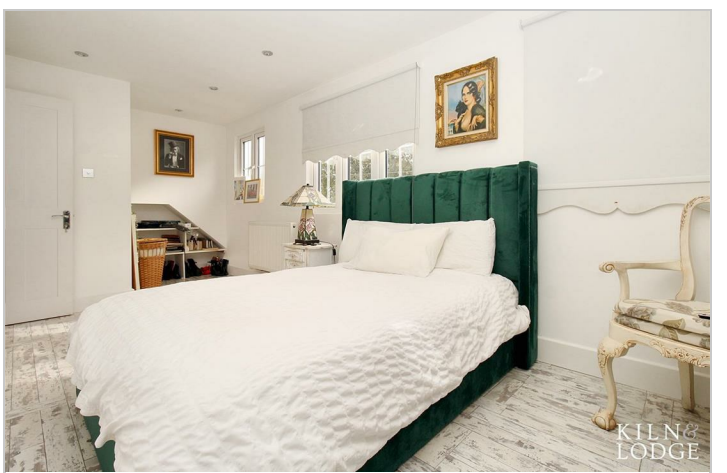
Exterior

Front Garden & Off Road Parking

Hardstanding providing off road parking, access to rear garden,

Rear Garden

Paved patio area, remainder laid to lawn, summer house and sheds to remain.



Road Map



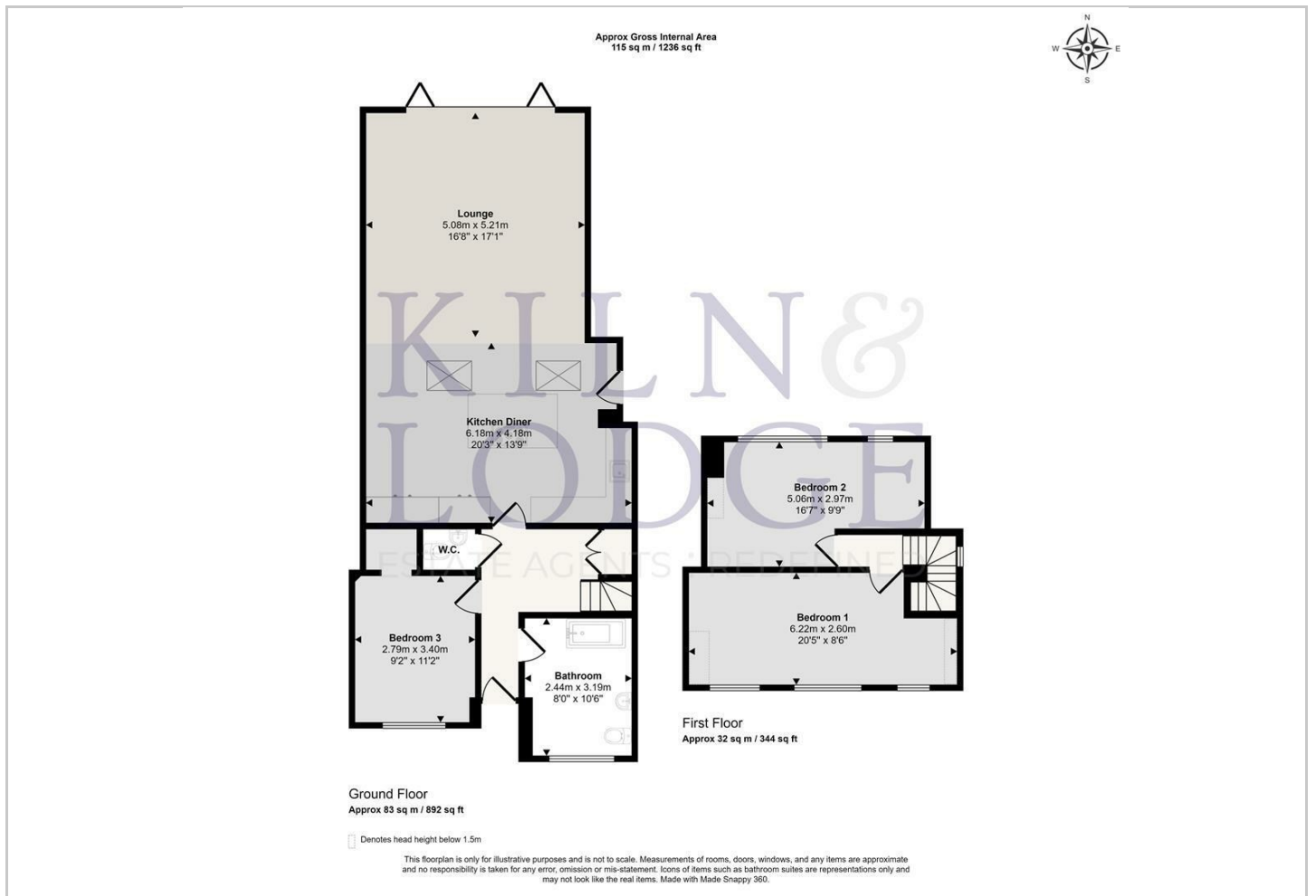
Hybrid Map



Terrain Map



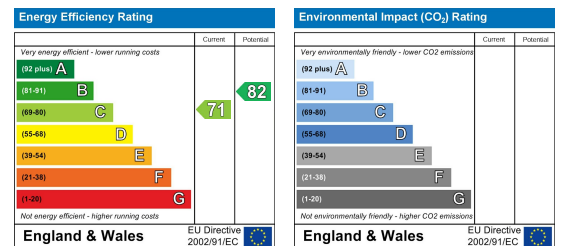
Floor Plan



Viewing

Please contact our Chelmsford Office on 01245 330764 if you wish to arrange a viewing appointment for this property or require further information.

Energy Efficiency Graph



These particulars, whilst believed to be accurate are set out as a general outline only for guidance and do not constitute any part of an offer or contract. Intending purchasers should not rely on them as statements of representation of fact, but must satisfy themselves by inspection or otherwise as to their accuracy. No person in this firm's employment has the authority to make or give any representation or warranty in respect of the property.