



pc.

135 St. Margarets Road, Stanstead Abbots
£750,000



pc.
PETER CUFFARO
ESTATE AGENTS



pc.
PETER CUFFARO
ESTATE AGENTS

135 St. Margarets Road

Stanstead Abbots, Ware

Four bedroom semi-detached home, offering a harmonious blend of comfort, convenience, and style in a desirable location. Do not miss the opportunity to make this residence your new family home.

Council Tax band: E

Tenure: Freehold

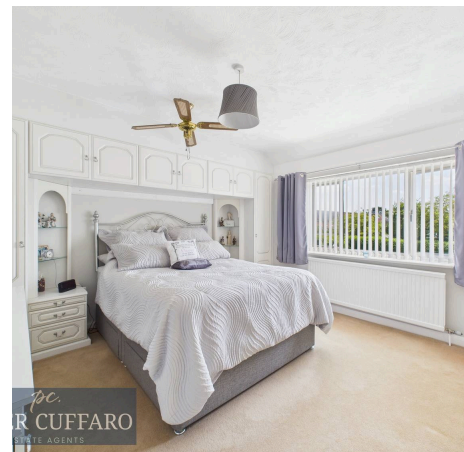
- Extended Four Bedroom Family Home in Sought After Location
- Lounge/Diner and Separate Living Room
- Fitted Kitchen
- Conservatory
- Ground Floor Cloakroom
- First Floor Offers Four Generous Bedrooms a Family Bathroom with a separate Shower and a additional shower.
- The Front Drive Offers Off Street Parking For Five Vehicles Plus Access to a Double Garage. Whilst The Beautifully Landscaped Rear Garden is a Perfect Retreat
- Walking Distance To Schooling For All Ages
- Walking Distance To St Margarets Station and Stanstead Abbots High Street.
- Easy Access To Major Road Links including A10, A414, M11 and M25



pc.
PETER CUFFARO
ESTATE AGENTS



pc.
PETER CUFFARO
ESTATE AGENTS



pc.
PETER CUFFARO
ESTATE AGENTS

pc.
PETER CUFFARO
ESTATE AGENTS



Entrance Porch

9' 2" x 3' 7" (2.79m x 1.08m)

Entrance Hall

6' 0" x 5' 3" (1.82m x 1.60m)

Living Room

20' 1" x 11' 9" (6.12m x 3.57m)

Lounge/Diner

22' 6" x 8' 10" (6.87m x 2.70m)

Kitchen

11' 3" x 9' 5" (3.43m x 2.87m)

Hallway

6' 6" x 35' 8" (1.99m x 10.88m)

Conservatory

11' 2" x 9' 5" (3.40m x 2.87m)

Ground Floor Cloakroom

6' 2" x 2' 6" (1.88m x 0.76m)

Landing

Bedroom One

12' 0" x 11' 11" (3.65m x 3.62m)

Bedroom Two

12' 1" x 8' 9" (3.69m x 2.67m)

Bedroom Three

11' 3" x 9' 6" (3.42m x 2.89m)

Bedroom Four

7' 10" x 5' 10" (2.38m x 1.77m)

Family Bathroom

11' 3" x 6' 10" (3.44m x 2.09m)

Integral Double Garage

18' 11" x 14' 1" (5.76m x 4.30m)





pc.
PETER CUFFARO
 ESTATE AGENTS

Approximate total area⁽¹⁾
 1662 ft²
 154.6 m²

(1) Excluding balconies and terraces

Calculations reference the RICS IPMS 3C standard. Measurements are approximate and not to scale. This floor plan is intended for illustration only.

GIRAFFE360

MONEY LAUNDERING REGULATIONS: Purchasers need to produce identification documentation at a later stage, and we would ask for your co-operation in order that there will be no delay in agreeing the sale. We endeavour to make our sales particulars accurate/reliable; they are only a guide to the property. Measurements indicated are supplied for guidance only and must be considered incorrect. Please note we have not tested the services or equipment/appliances in this property, we strongly advise prospective buyers to commission their own survey and service reports before finalising an offer to purchase. THESE PARTICULARS ARE ISSUED IN GOOD FAITH BUT DO NOT CONSTITUTE OR REPRESENT FACT OR FORM PART OF ANY OFFER/CONTRACT. THE MATTERS REFERRED TO IN THE PARTICULARS SHOULD BE INDEPENDENTLY VERIFIED BY PROSPECTIVE BUYERS/TENANTS. NEITHER PETER CUFFARO ESTATE AGENTS OR ANY OF ITS EMPLOYEES/AGENTS HAVE AUTHORITY TO MAKE/GIVE ANY REPRESENTATION OR WARRANTY IN RELATION TO THIS PROPERTY.