

172 Devizes Road,
Salisbury, Wiltshire SP2 7LT

£275,000 Freehold

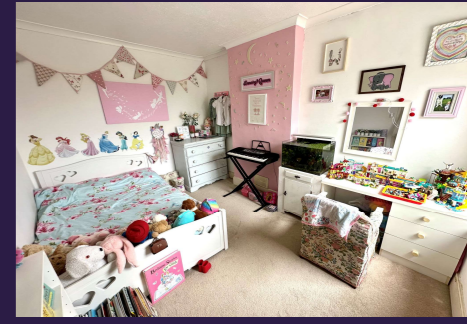
Northwood Salisbury are delighted to bring to market this charming, well presented, three bedroom, semi-detached property on Devizes Road. The ground floor accommodation comprises of: entrance hallway, living area, measuring 11'11" Max X 10'3" Max dining area, kitchen, modern bathroom, and utility area/conservatory leading to the patio and garden. The first floor offers: a single bedroom, a double bedroom, a WC, and a generously sized master bedroom. The property is Double Glazed, excluding the conservatory. Gas Central Heating. EPC: C. Council Tax Band: C

IMPORTANT: We would like to inform prospective purchasers that these sales particulars have been prepared as a general guide only. A detailed survey has not been carried out, nor the services, appliances and fittings tested. Room sizes should not be relied upon for furnishing purposes and are approximate. If floorplans are included they are for guidance and illustration purposes only and may not be to scale. If there are any important matters likely to affect your decision to buy, please contact us before viewing the property.



Overview

- THREE BEDROOM SEMI-DETACHED
- PRIVATE REAR GARDEN
- LARGE MASTER BEDROOM
- MODERN BATHROOM
- UTILITY AREA / CONSERVATORY
- OPEN PLAN LIVING / DINING AREA
- UPSTAIRS WC
- VIEWING ESSENTIAL
- DOUBLE GLAZING
- GAS CENTRAL HEATING



ENTRANCE HALLWAY

LIVING AREA (11'11" Max X 10'03" Max)

DINING AREA (11'11" Max X 10'03" Max)

KITCHEN (7'10" Max X 8'01" Max)

BATHROOM (5'11 Max X 7'02 Max)

UTILITY AREA / CONSERVATORY (12'04" Max X 7'09")

BEDROOM 1 (12'00" Max X 13'08" Max)

BEDROOM 2 (11'10" Max X 8'08" Max)

BEDROOM 3 (6'09" Max X 7'02" Max)

WC

Tenure - Freehold

EPC: C

Council Tax Band: C

Agents Note - Draft Copy of Particulars.

Sales Disclaimer (OVM)

These particulars are believed to be correct and have been verified by or on behalf of the Vendor. However any interested party will satisfy themselves as to their accuracy and as to any other matter regarding the Property or its location or proximity to other features or facilities which is of specific importance to them. Distances and areas are only approximate and unless otherwise stated fixtures contents and fittings are not included in the sale. Prospective purchasers are always advised to commission a full inspection and structural survey of the Property before deciding to proceed with a purchase.