



Northern Rose Close , Bury St. Edmunds, IP32 7PB

Isaac Estates are delighted to market this well presented three bedroom three storey town house situated on the Popular Moreton Hall Development.

The property is set over three floors and offers entrance hallway, cloakroom, utility room, bedroom 3/study to the ground floor, the first floor offers modern kitchen with integrated single oven and gas hob, integrated Dishwashers, Fridge and freezer included/dining room with Juliet balcony doors, sitting room.

The third floor offers two double bedrooms, master bedroom with en-suite shower room and a further bathroom with separate bath and shower cubicle.

Externally the property offers an enclosed rear garden, single garage and parking.

Video tour available upon request.

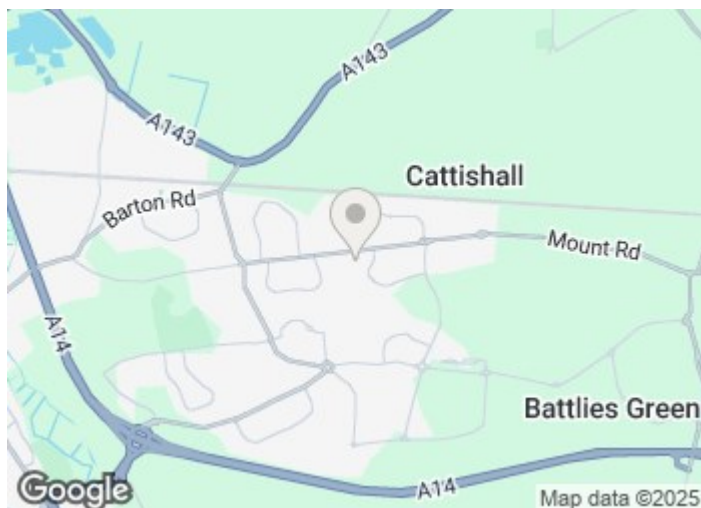
£1,450 Per month

Northern Rose Close

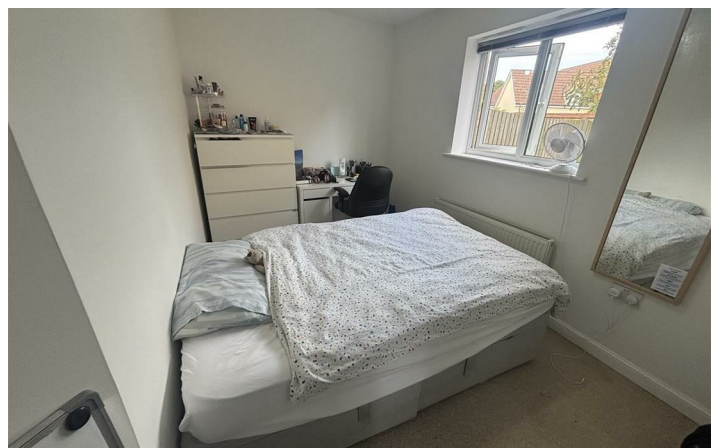
, Bury St. Edmunds, IP32 7PB



- WELL PRESENTED THREE STOREY TOWN HOUSE
- FIRST FLOOR MODERN KITCHEN WITH INTEGRATED APPLIANCES INCLUDED / DINING ROOM
- FURTHER DOUBLE BEDROOM, FAMILY BATHROOM WITH SEPARATE BATH AND SHOWER CUBICLE
- EPC 72C, COUNCIL TAX BAND D, VIEWING HIGHLY RECOMMENDED
- ENTRANCE HALLWAY, CLOAKROOM
- SITTING ROOM WITH BALCONY
- ENCLOSED REAR GARDEN, SINGLE GARAGE AND PARKING SPACE
- UTILITY ROOM WITH WATER SOFTENER, GROUND FLOOR BEDROOM / STUDY
- MASTER BEDROOM WITH EN-SUITE SHOWER ROOM
- GAS CENTRAL HEATING, MINIMUM TERM CONTRACT TWELVE MONTHS



Directions





Floor Plan

These particulars, whilst believed to be accurate are set out as a general outline only for guidance and do not constitute any part of an offer or contract. Intending purchasers should not rely on them as statements of representation of fact, but must satisfy themselves by inspection or otherwise as to their accuracy. No person in this firms employment has the authority to make or give any representation or warranty in respect of the property.

