



Barwick Avenue , Bury St. Edmunds, IP32 6TW

Isaac Estates are pleased to offer this well presented two bedroom semi detached house located on the Popular Marham Park Development, conveniently located within easy access to the A14

The property is set over two floors and offers entrance hallway, sitting room, kitchen / dining room with integrated electric oven and gas hob, separate utility area, cloakroom. The first floor offers master bedroom with en-suite shower room, further second double bedroom and family bathroom. Externally the property offers a rear garden with garden shed, driveway parking for at least two vehicles.

Viewing highly recommended

£1,250 Per month

Barwick Avenue

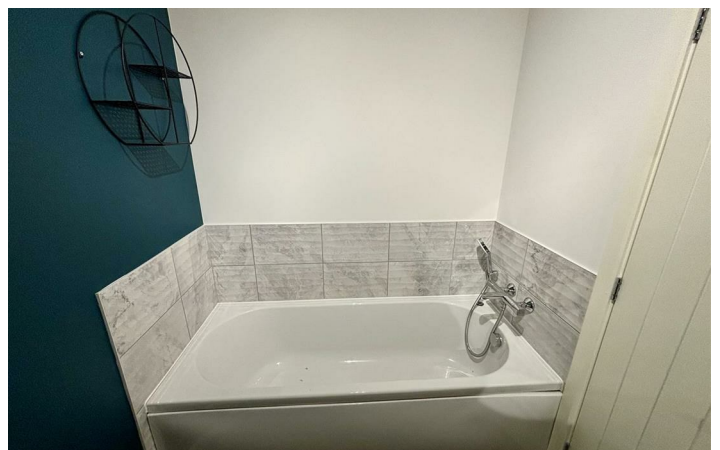
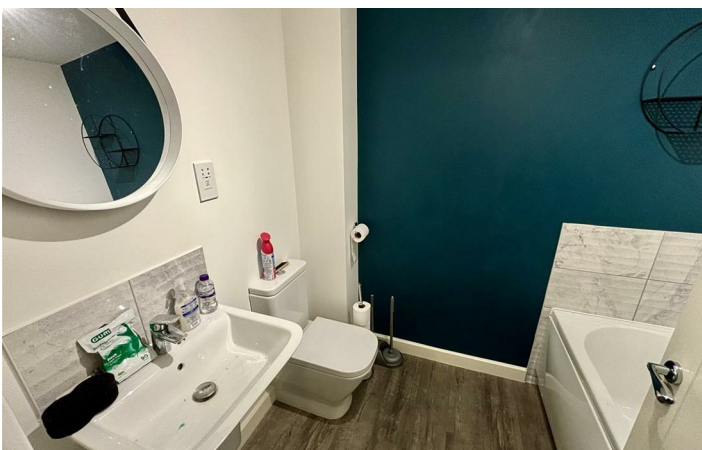
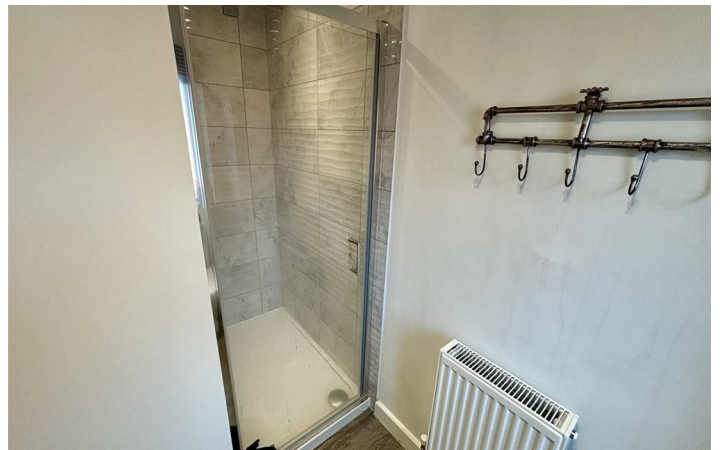
, Bury St. Edmunds, IP32 6TW



- SEMI DETACHED HOUSE LOCATED ON THE POPULAR MARHAM PARK DEVELOPMENT
- SEPARATE UTILITY ROOM, CLOAKROOM
- ENCLOSED REAR GARDEN WITH GARDEN SHED
- ENTRANCE HALLWAY, SITTING ROOM
- MASTER BEDROOM WITH EN-SUITE SHOWER ROOM
- DRIVEWAY PARKING, GAS CENTRAL HEATING, EPC 83B
- KITCHEN WITH INTEGRATED OVEN AND GAS HOB AND PATIO DOORS LEADING TO THE REAR GARDEN
- FURTHER DOUBLE BEDROOM, FAMILY BATHROOM
- MINIMUM TERM CONTRACT TWELVE MONTHS



[Directions](#)





Floor Plan

These particulars, whilst believed to be accurate are set out as a general outline only for guidance and do not constitute any part of an offer or contract. Intending purchasers should not rely on them as statements of representation of fact, but must satisfy themselves by inspection or otherwise as to their accuracy. No person in this firm's employment has the authority to make or give any representation or warranty in respect of the property.

12 Langton Place, Hatter Street, Bury St Edmunds, Suffolk, IP33 1NE
Tel: 01284 620011 Email: ryan@isaacestates.co.uk www.isaacestates.co.uk

