



## St. Peters Court , Bury St. Edmunds, IP33 3LY

Isaac Estates are pleased to market this three bedroom maisonette situated a short distance from the town centre and West Suffolk Hospital.

The property offers stairway to first floor, entrance hallway, kitchen with electric oven and hob (other appliances can remain), spacious sitting room / dining room, three double bedrooms and family bathroom.

There have been some new electric heaters installed. The property benefits from one allocated parking space.

Video tour available upon request

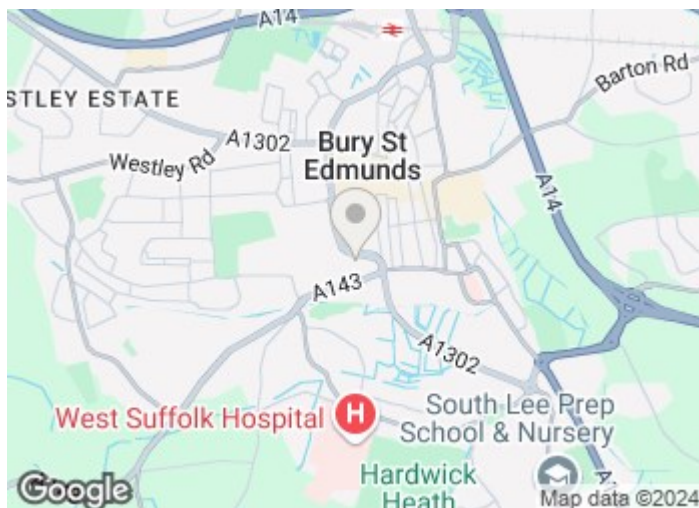
£1,200 Per month

# St. Peters Court

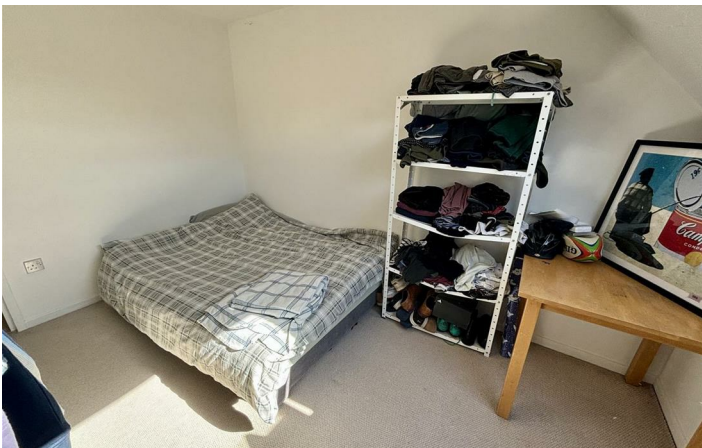
, Bury St. Edmunds, IP33 3LY



- MODERN FIRST FLOOR MAISONETTE
- SITTING ROOM / DINING ROOM
- SITUATED A SHORT WALK TO THE TOWN CENTRE AND WEST SUFFOLK HOSPITAL.
- STAIRS LEADING TO ENTRANCE HALLWAY
- THREE DOUBLE BEDROOMS, FAMILY BATHROOM
- MINIMUM TERM CONTRACT TWELVE MONTHS
- KITCHEN WITH ELECTRIC OVEN AND HOB (OTHER APPLIANCES CAN REMAIN)
- ONE ALLOCATED PARKING SPACE, SOME NEW ELECTRIC HEATERS INSTALLED



[Directions](#)





# Floor Plan

These particulars, whilst believed to be accurate are set out as a general outline only for guidance and do not constitute any part of an offer or contract. Intending purchasers should not rely on them as statements of representation of fact, but must satisfy themselves by inspection or otherwise as to their accuracy. No person in this firm's employment has the authority to make or give any representation or warranty in respect of the property.

12 Langton Place, Hatter Street, Bury St Edmunds, Suffolk, IP33 1NE  
Tel: 01284 620011 Email: [ryan@isaacestates.co.uk](mailto:ryan@isaacestates.co.uk) [www.isaacestates.co.uk](http://www.isaacestates.co.uk)

Energy Efficiency Rating		Current	Potential
<i>Very energy efficient - lower running costs</i>			
(92 plus) <b>A</b>			
(81-91) <b>B</b>			
(69-80) <b>C</b>			
(55-68) <b>D</b>			
(39-54) <b>E</b>			
(21-38) <b>F</b>			
(1-20) <b>G</b>			
<i>Not energy efficient - higher running costs</i>			
<b>England &amp; Wales</b>		EU Directive 2002/91/EC	