

Codling Road , Bury St. Edmunds, IP32 7HE

Beautifully presented two bedroom terraced house located on the popular Moreton Hall Development.

The house is set over two floors and offers front porch, sitting room, refitted kitchen with new electric oven and hob to be fitted & integrated fridge freezer included / dining room, two bedrooms with freestanding wardrobes included and refitted shower room. Externally there is a low maintenance rear garden and two allocated parking spaces.

Video tour available upon request.

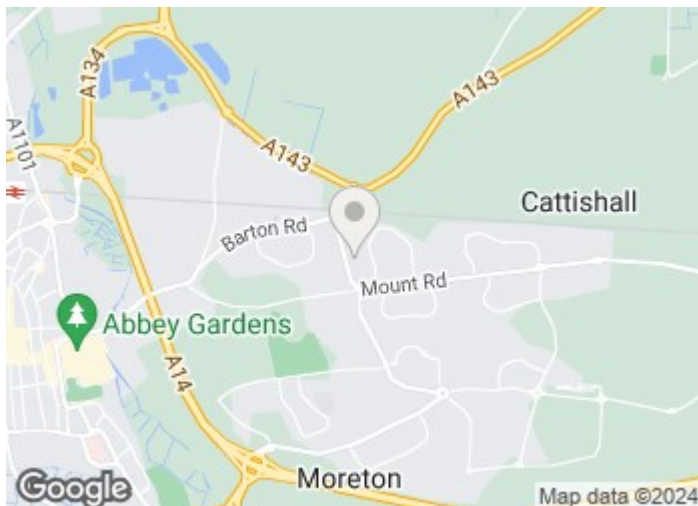
£1,100 Per month

Codling Road

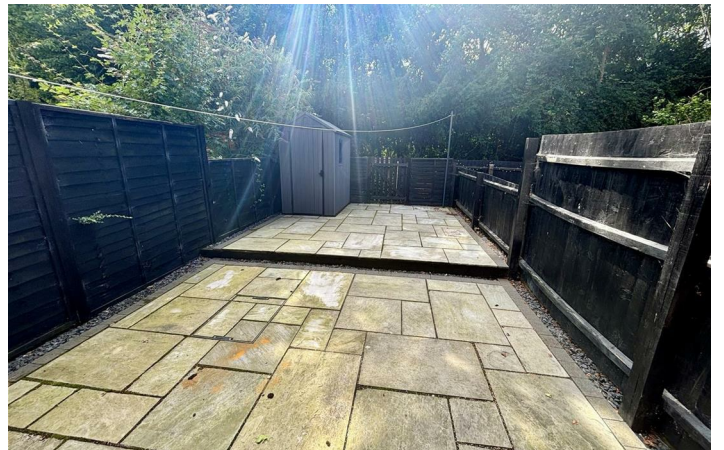
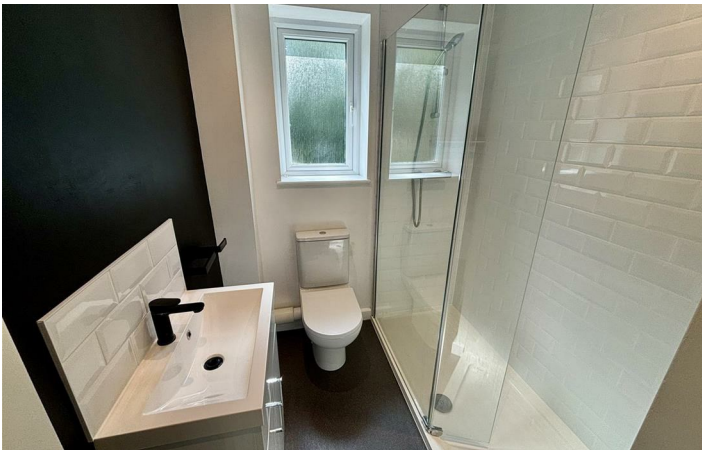
, Bury St. Edmunds, IP32 7HE



- MODERN TERRACED HOUSE SITUATED ON MORETON HALL
- TWO BEDROOMS, BOTH WITH FREESTANDING WARDROBES AND WOOD LAMINATE FLOORING
- TWO ALLOCATED PARKING SPACES, GAS CENTRAL HEATING
- FRONT PORCH, SITTING ROOM
- REFITTED SHOWER ROOM
- MINIMUM TERM CONTRACT TWELVE MONTHS
- REFITTED KITCHEN WITH NEW ELECTRIC OVEN AND HOB TO BE FITTED, INTEGRATED FRIDGE FREEZER / DINING ROOM
- ENCLOSED LOW MAINTENANCE REAR GARDEN



[Directions](#)





Floor Plan

These particulars, whilst believed to be accurate are set out as a general outline only for guidance and do not constitute any part of an offer or contract. Intending purchasers should not rely on them as statements of representation of fact, but must satisfy themselves by inspection or otherwise as to their accuracy. No person in this firm's employment has the authority to make or give any representation or warranty in respect of the property.

12 Langton Place, Hatter Street, Bury St Edmunds, Suffolk, IP33 1NE
Tel: 01284 620011 Email: ryan@isaacestates.co.uk www.isaacestates.co.uk

