



## Aspen Way Red Lodge, IP28 8GU

Isaac Estates are delighted to market this beautiful four bedroom detached house which offers spacious accommodation through out. The property is situated a short drive from both RAF Lakenheath and Mildenhall.

The property is set over two floors and offers entrance hallway, cloakroom, sitting room with patio doors leading to the rear garden, modern kitchen with integrated with double oven and gas hob, integrated dishwasher and fridge freezer, utility room, separate dining room and study room.

The first floor offers two good sized bedrooms, both with fitted wardrobes and en-suite bathrooms, two further double bedrooms (one with fitted wardrobes) and family bathroom.

External, there is a rear garden, single garage and parking to front.

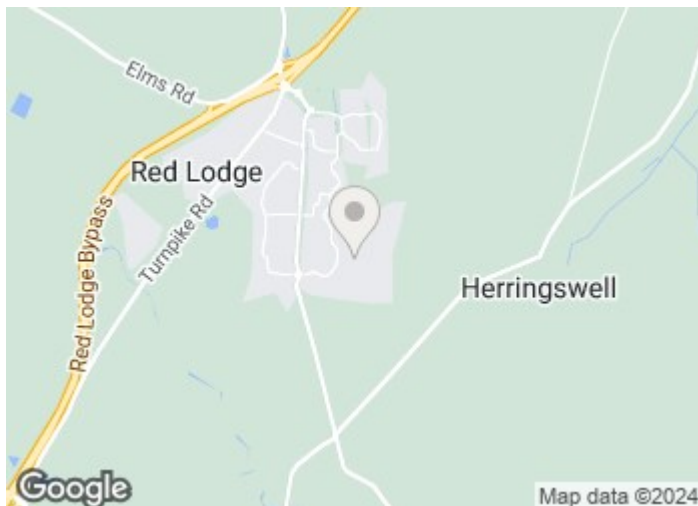
£1,995 Per month

# Aspen Way

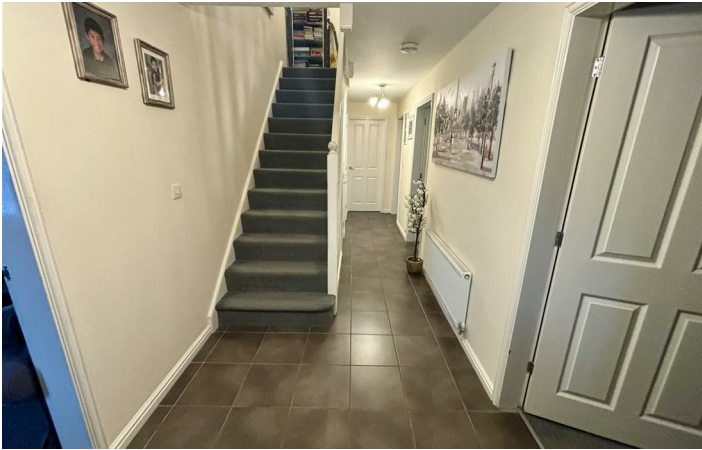
## Red Lodge, IP28 8GU



- SPACIOUS FOUR BEDROOM DETACHED HOUSE
- SITTING ROOM WITH PATIO DOORS TO GARDEN
- TWO FURTHER DOUBLE BEDROOMS (ONE WITH FITTED WARDROBES), FAMILY BATHROOM
- SITUATED A SHORT DRIVE TO RAF MILDENHALL AND LAKENHEATH
- ENTRANCE HALLWAY, CLOAKROOM
- SEPARATE DINING ROOM, STUDY
- REAR GARDEN, SINGLE GARAGE AND PARKING, EPC 80 C
- MODERN KITCHEN WITH INTEGRATED DOUBLE OVEN. AND GAS HOB, FRIDGE / FREEZER AND DISHWASHER
- TWO BEDROOMS, BOTH WITH FITTED WARDROBES AND EN-SUITE SHOWER ROOMS
- GAS CENTRAL HEATING, MINIMUM TERM CONTRACT TWELVE MONTHS



[Directions](#)





# Floor Plan

These particulars, whilst believed to be accurate are set out as a general outline only for guidance and do not constitute any part of an offer or contract. Intending purchasers should not rely on them as statements of representation of fact, but must satisfy themselves by inspection or otherwise as to their accuracy. No person in this firm's employment has the authority to make or give any representation or warranty in respect of the property.

12 Langton Place, Hatter Street, Bury St Edmunds, Suffolk, IP33 1NE  
Tel: 01284 620011 Email: [ryan@isaacestates.co.uk](mailto:ryan@isaacestates.co.uk) [www.isaacestates.co.uk](http://www.isaacestates.co.uk)

