



## Melford Road, SE22

£875,000

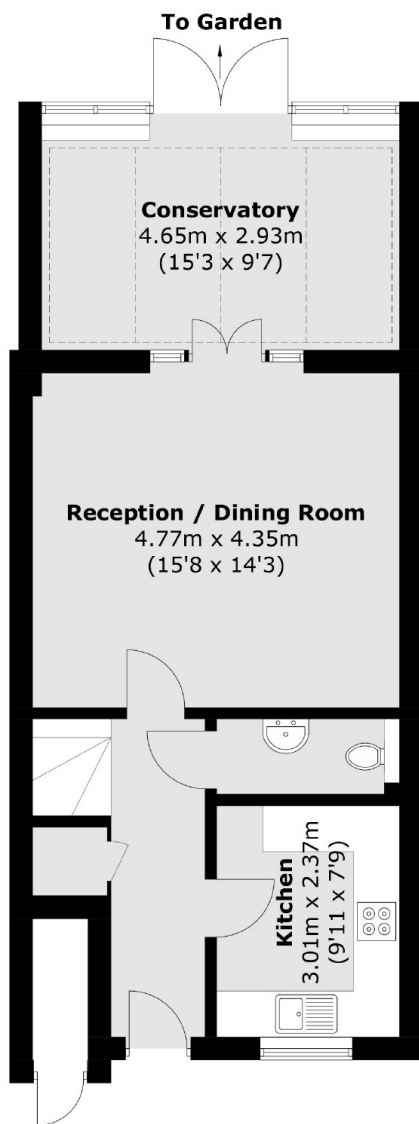
The house was built in 2002. Accommodation is bright and spacious throughout. Downstairs offers a wonderfully large reception area leading you out to a conservatory area and then onto a sunny South Facing garden. Upstairs has an excellent balance of bedrooms and bathrooms, with the main bedroom benefitting from an en suite shower room and a good family bathroom serving the remaining three bedrooms.

Melford Road is quietly and securely tucked away off Lordship Lane perfectly placed to enjoy the vibrant mix of independent bars, restaurants, and well-known high street names. With excellent transport links, West Dulwich, East Dulwich and Forest Hill stations are a short walk or bus away providing frequent rail services to London Bridge, Victoria, and the City.

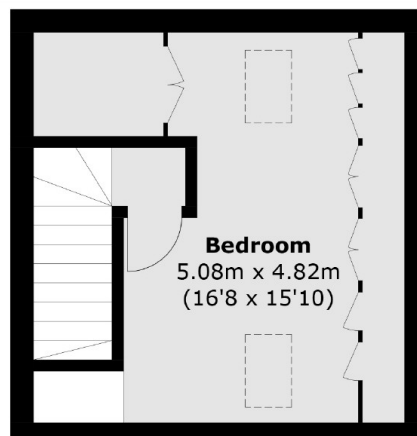
### Features

- Four Bedrooms
- Two Bathrooms
- Off Street Parking
- Conservatory
- South Facing Garden
- Quiet Location

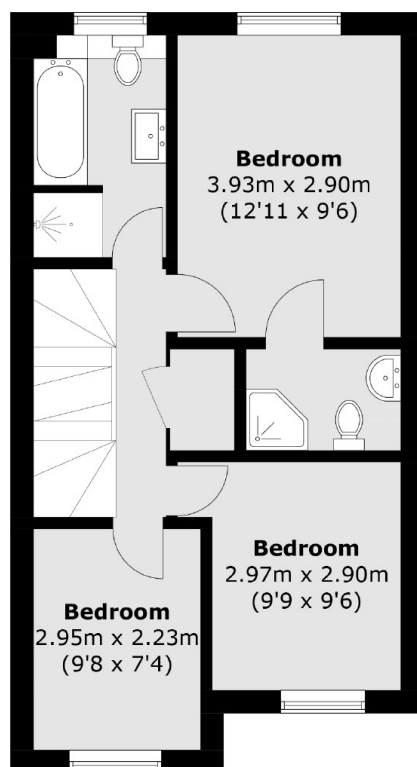
# Melford Road, London, SE22



**Ground Floor**



**Second Floor**



**First Floor**

Total area (approx.): 121.6 sq. m (1,308.9 sq. ft)