



Lordship Lane, SE22

£550,000

Set within a modern purpose-built development, this beautifully presented two bedroom, two bathroom top floor flat offers stylish living with a truly exceptional roof terrace.

Gloucester Court is a modern development situated along Lordship Lane and perfectly placed for many of the areas amenities, including independent restaurants, local shops and bars. The green open spaces of Dulwich Park are close at hand as are frequent rail connections from Forest Hill (Overground) and West Dulwich stations.

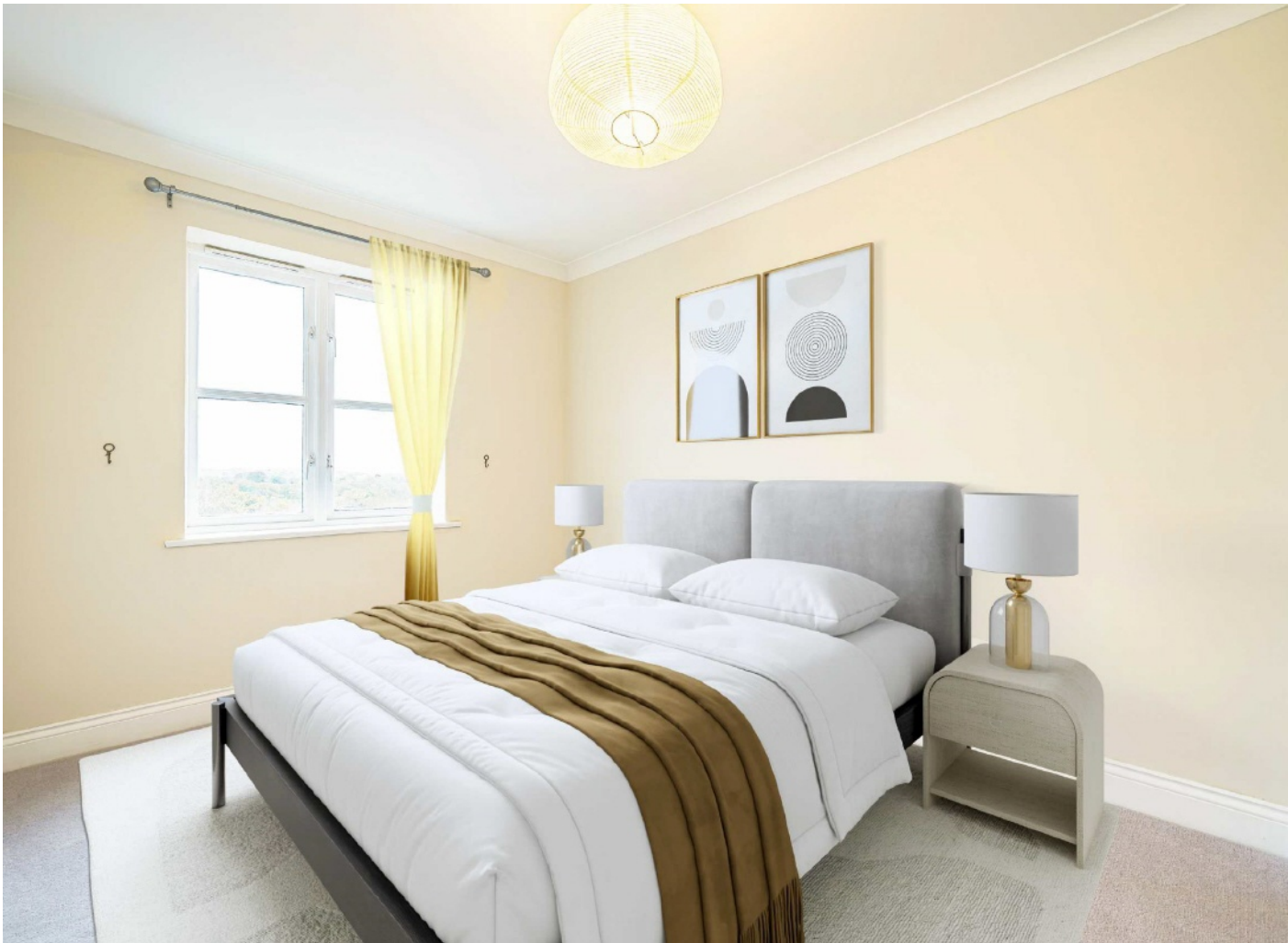
Features

- Modern Development
- Two Double Bedrooms
- Good Decorative order
- Allocated Parking Space
- Communal Gardens
- No Onward Chain

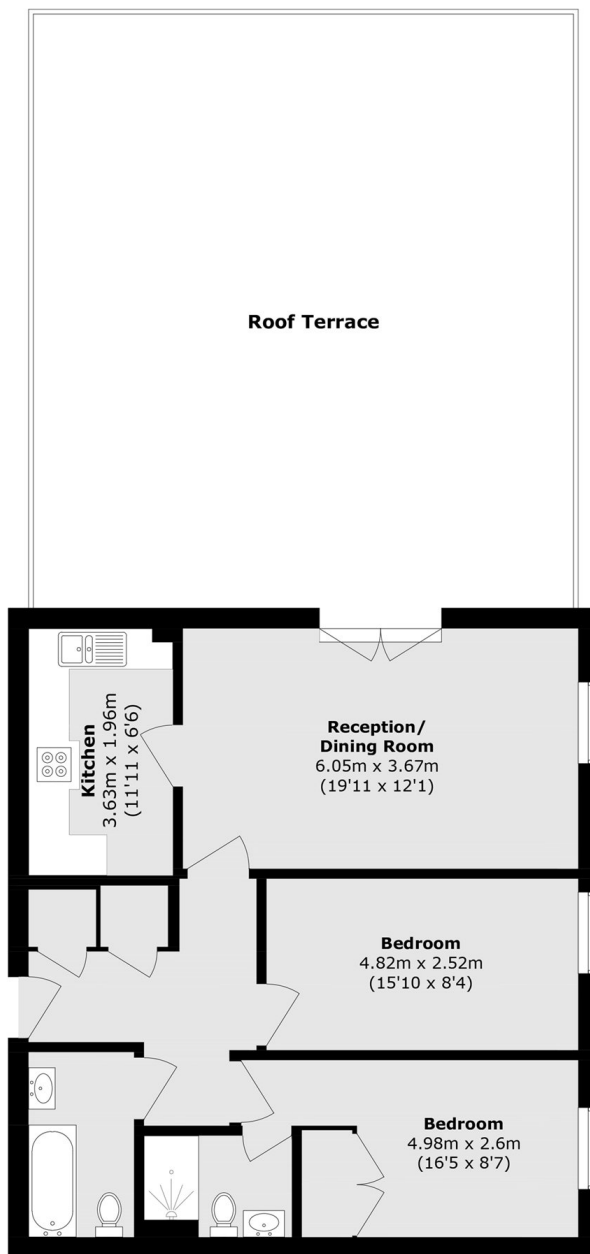


Lordship Lane, SE22

The property is decorated to a high standard throughout and is ready to be enjoyed. The accommodation includes two generous double bedrooms, one of which benefits from a en-suite bathroom, along with a further well-appointed family bathroom. The spacious reception/dining room is bright and inviting and features semi open-plan access to a modern fitted kitchen. From the reception, French doors open directly onto a huge private roof terrace, a real standout feature of the home, boasting green views across East Dulwich perfect for summer dining, entertaining, or simply enjoying the peace and outlook. Additional benefits include allocated off-street parking and secure entry to the building.



Lordship Lane, London, SE22



Total area (approx.): 72.3 sq. m (778.4 sq. ft)

Roof Terrace (approx.): 69.4 sq. m (747 sq. ft)

Dexters

East Dulwich
98 Grove Vale
London
SE22 8DR

Sales
020 8742 4142

Energy Rating: D. We aim to make our particulars both accurate and reliable. However they are not guaranteed; nor do they form part of an offer or contract. If you require clarification on any points then please contact us, especially if you're traveling some distance to view. Please note that appliances and heating systems have not been tested and therefore no warranties can be given as to their good working order.

 **RICS** | Regulated
Estate Agent
and Letting Agent

[dexters.co.uk](https://www.dexters.co.uk)