



## Lordship Lane, SE22

### £550,000

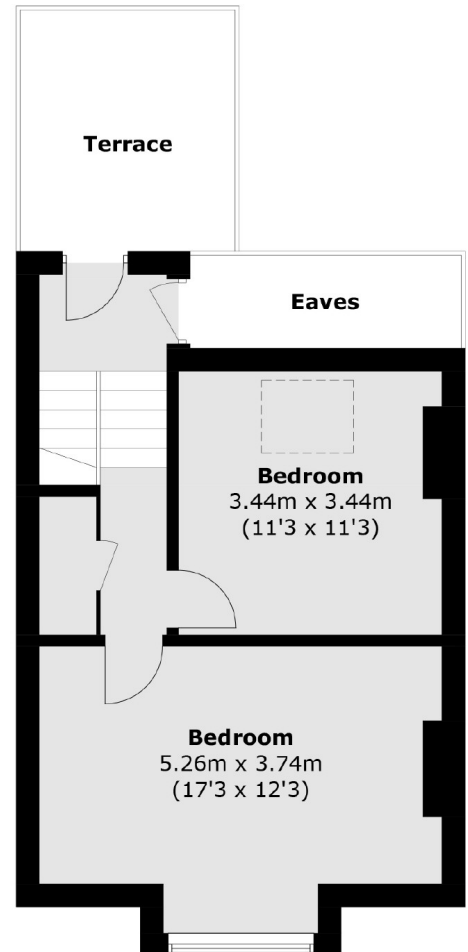
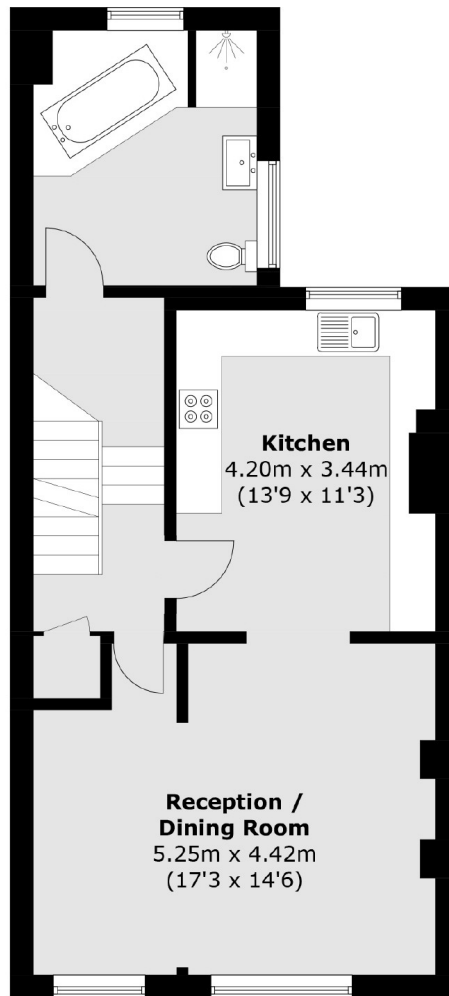
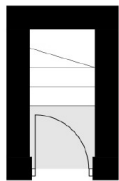
A spacious and characterful split-level two double bedroom apartment set along vibrant Lordship Lane, covering over 1000sq ft and the property is being sold chain free.

Perfectly positioned on Lordship Lane, the property is moments from beautiful Dulwich Park and the area's vibrant selection of cafés, restaurants and independent shops. Excellent transport links are available via East Dulwich and Forest Hill Stations, providing easy access to London Bridge and beyond.

### Features

- South West Facing Terrace
- Impressive Open Plan
- Spacious Double Bedrooms
- Chain Free
- Great Location
- Edwardian Conversion

Lordship Lane,  
London, SE22



**Ground Floor**

**First Floor**

**Second Floor**

Total area (approx.): 96.5 sq. m (1,038.6 sq. ft)  
(Excluding Eaves)  
Terrace: 8.8 sq. m (94.7 sq. ft)