



Crystal Palace Road, SE22

£1,475,000

Dexters

Crystal Palace Road, SE22

A beautifully presented and fully extended Victorian semi-detached home offering over 1,580 sq feet of living space across three floors, this impressive property is ideal for growing families seeking space, style, and a prime SE22 location.

A welcoming hallway leads to a spacious double reception room, semi open-plan in design, with beautiful solid wood flooring, high ceilings, and a characterful bay window. A standout feature is the large internal window between the reception and kitchen/diner, designed to flood the entire ground floor with natural light. To the rear, the home truly comes to life in the extended kitchen/diner the heart of the home. Featuring an apex roof wraparound extension, this space is flooded with light and provides ample room for modern family living. The fully fitted kitchen includes a central breakfast bar and seamlessly connects to the spacious dining area. Full-width bi-fold doors open onto a stunning east-facing garden. The garden itself is beautifully landscaped, with a stone patio perfect for al fresco dining, and steps leading to a lawn area framed by mature plants and shrubs. The first floor hosts three generously sized double bedrooms along with a spacious family bathroom complete with modern fittings and a full-sized bathtub. The thoughtfully designed loft conversion provides a further two double bedrooms, including the principal suite. This luxurious space features an en-suite shower room and a charming Juliette balcony.

Features

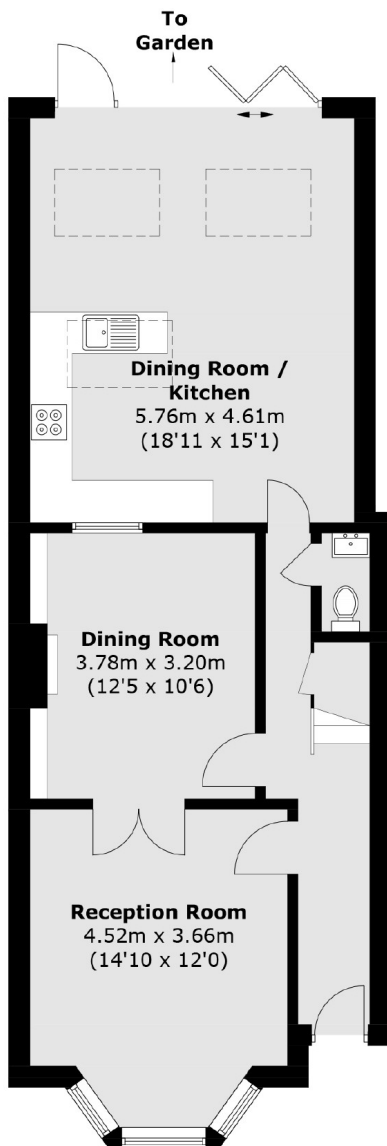
- Five Bedrooms
- Semi-Detached House
- Proximity To Schools
- Open Plan Living
- East Facing Mature Garden
- Fully Extended



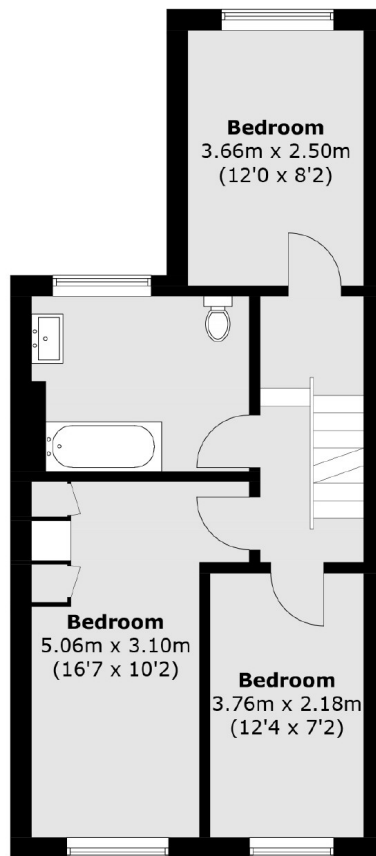




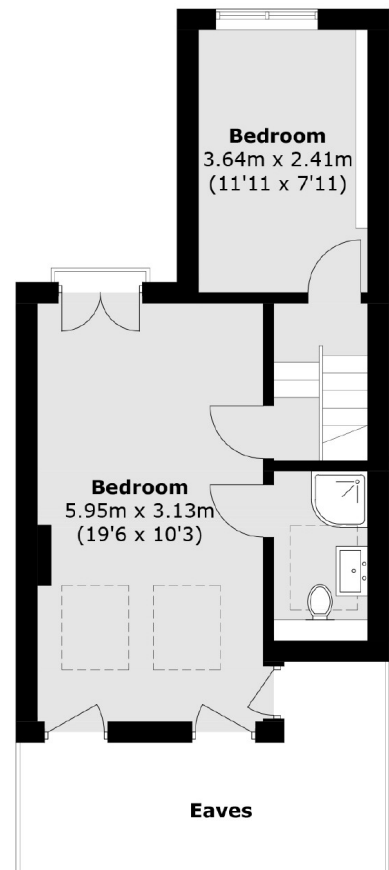
Crystal Palace Road, London, SE22



Ground Floor



First Floor



Second Floor

Total area (approx.): 147.4 sq. m (1,586.4 sq. ft)
(Excluding Eaves)