



Peckham Rye, SE22

£450,000

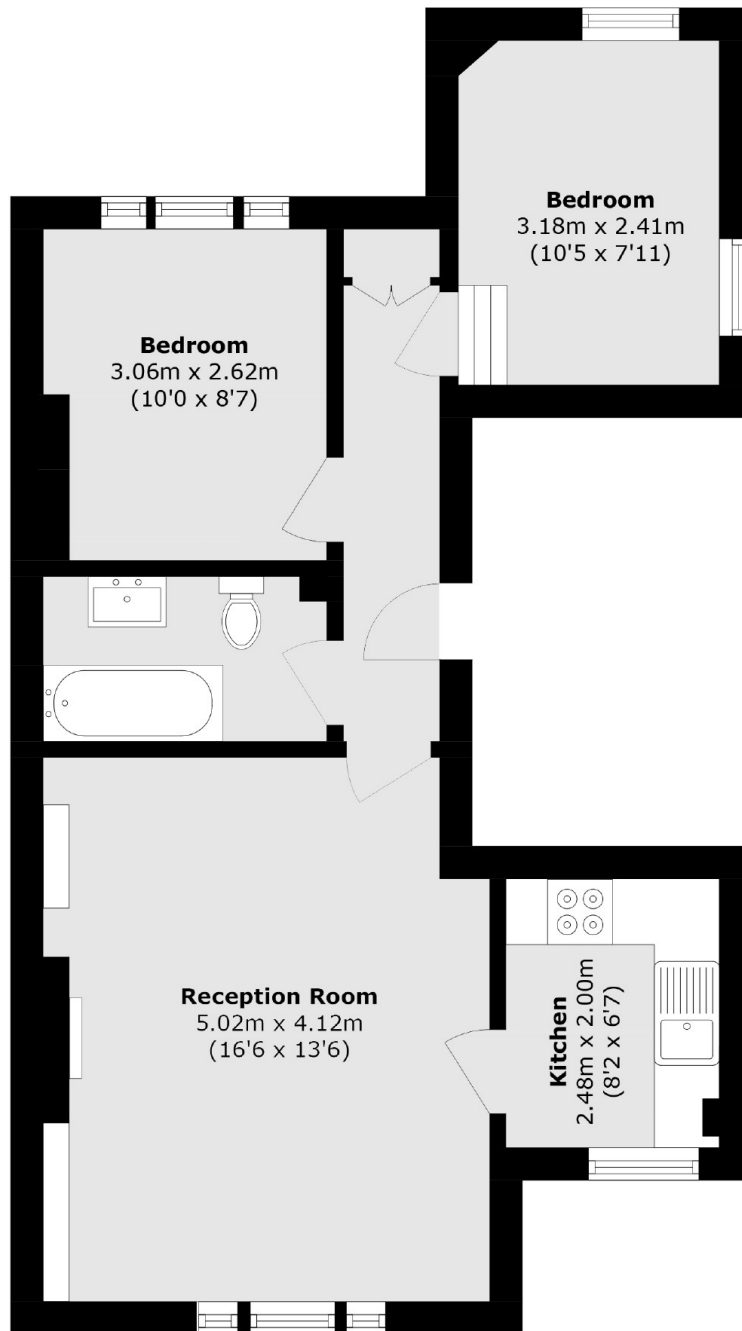
A unique opportunity to acquire this charming, first floor two bedroom flat with picturesque views of Peckham Rye Park. Located within an imposing Victorian semi-detached building, this property boasts original floorboards and a character fireplace, making this the ultimate first purchase for anyone looking to own in one of South London's most desirable locations.

Peckham Rye is located in the heart of East Dulwich moments from an abundance of shopping amenities and excellent restaurants and bars along Lordship Lane. Peckham Rye & East Dulwich stations provides rail links to the city with the open spaces of Peckham Rye Park on your doorstep.

Features

- Views Of Peckham Rye Park
- Spacious Living Area
- Original Victorian Features
- 550 Square Foot
- Great Location
- Excellent Condition

Peckham Rye, London, SE22



Total area (approx.): 51.1 sq. m (550.0 sq. ft)

Dexters

East Dulwich
98 Grove Vale
London
SE22 8DR
Sales
020 8742 4142

Energy Rating: D. We aim to make our particulars both accurate and reliable. However they are not guaranteed; nor do they form part of an offer or contract. If you require clarification on any points then please contact us, especially if you're traveling some distance to view. Please note that appliances and heating systems have not been tested and therefore no warranties can be given as to their good working order.

 **RICS** | Regulated
Estate Agent
and Letting Agent

[dexters.co.uk](https://www.dexters.co.uk)