



Ryedale, SE22

£750,000

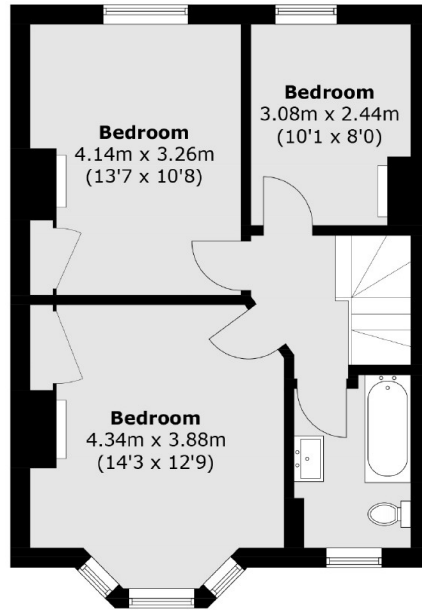
A three bedroom Victorian terraced freehold house in need of updating throughout. The house has over 1000 square feet of living space, a sunny garden and is being sold with no onward chain.

Ryedale is perfectly located between Peckham Rye Common, Camberwell Old Cemetery and amenities of Forest Hill Road with its bars, cafes, restaurants and independent shops. There are excellent transport links from Forest Hill Road busses within easy reach to Peckham Rye and Honor Oak Stations, as well as bus connections into the neighbouring Dulwich Village, Forest Hill, Peckham and Honor Oak.

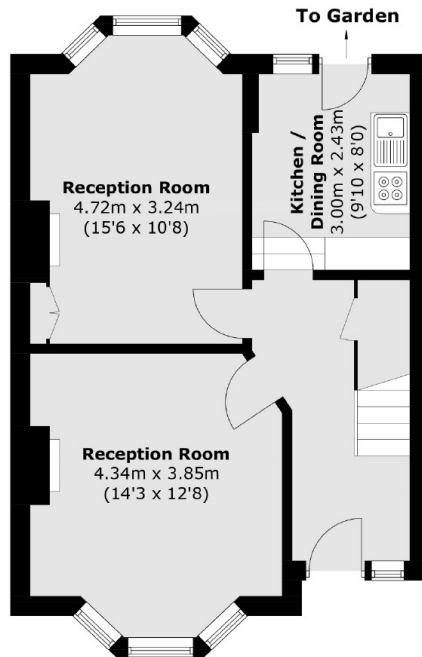
Features

- Three Bedrooms
- Original Victorian Features
- Private Garden
- Great Location
- Cellar
- Extension Potential STPP

Ryedale, London, SE22



First Floor



Ground Floor

Total area (approx.): 95.3 sq. m (1,025.8 sq. ft)
External WC: 1.0 sq. m (10.8 sq. ft)