



## Bessingham Walk, SE4

£525,000

A fantastic opportunity to acquire a split level, three bedroom maisonette with 948sq/ft of space, on the Crofton Park / Brockley borders.

Conveniently located within walking distance of Brockley, Crofton Park & Nunhead train stations with links to Blackfriars, City Thameslink, Farringdon, St Pancras and Victoria. Peckham Rye and Nunhead Cemetery are within close proximity, with Ivydale primary also on your doorstep.

### Features

- Private Garden
- Three Bedrooms
- Split Level Maisonette
- 948 Sq Ft
- No Onward Chain
- Great Transport Links



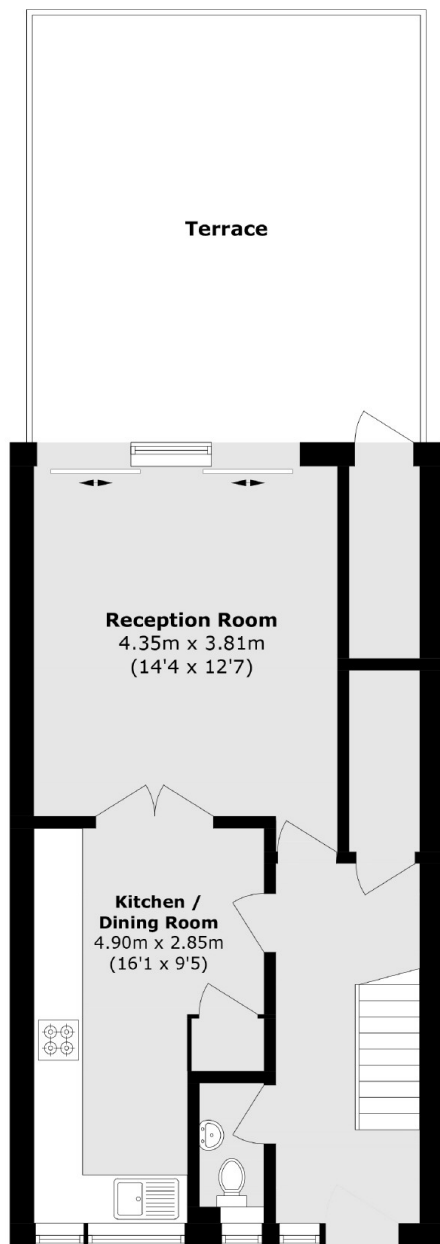
## Bessingham Walk, SE4

On the ground floor there is a fully equipped kitchen / dining room, large reception room with ample storage, and sliding doors opening up onto a landscaped private garden. There is also a downstairs WC. Upstairs there are three bedrooms and a family bathroom, all of which are well proportioned.

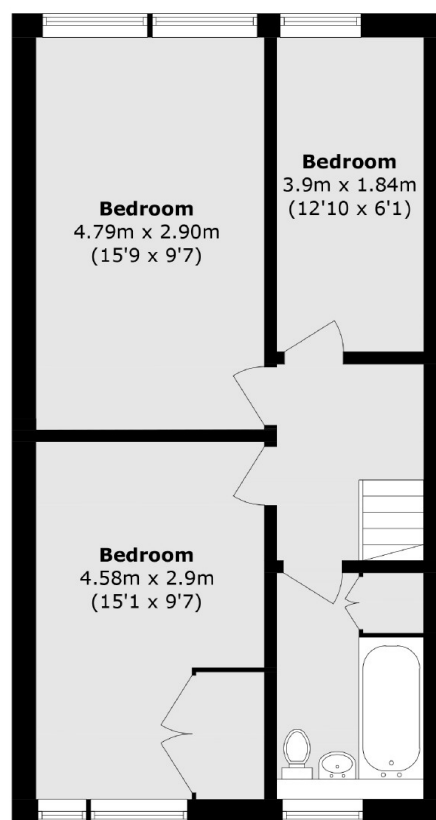




# Bessingham Walk, London, SE4



**First Floor**



**Second Floor**

Total internal area (approx.): 88.1 sq. m (948.3 sq. ft)

Terrace (approx.): 25.5 sq. m (274.4 sq. ft)

External storage (approx.): 2.1 sq. m (22.6 sq. ft)