



Crebor Street, SE22

£625,000

A beautifully presented two double bedroom Victorian conversion situated on the first floor of a Victorian terrace, the flat benefits from a share of the freehold and a private section of the garden, making it an exceptional opportunity for homeowners seeking character, space, and a garden to enjoy.

Convenient transport links include East Dulwich and Honor Oak Park Stations which combined offer services into London Bridge and Victoria as well as Overground links into Shoreditch and Canada Water. Lordship Lane is in easy reach for it's fantastic array shops, cafes, bars and restaurants and Peckham Rye Park is just round the corner.

Features

- Two Double Bedrooms
- Share Of The Freehold
- Private Garden
- Period Conversion
- Excellent Location
- Great Condition

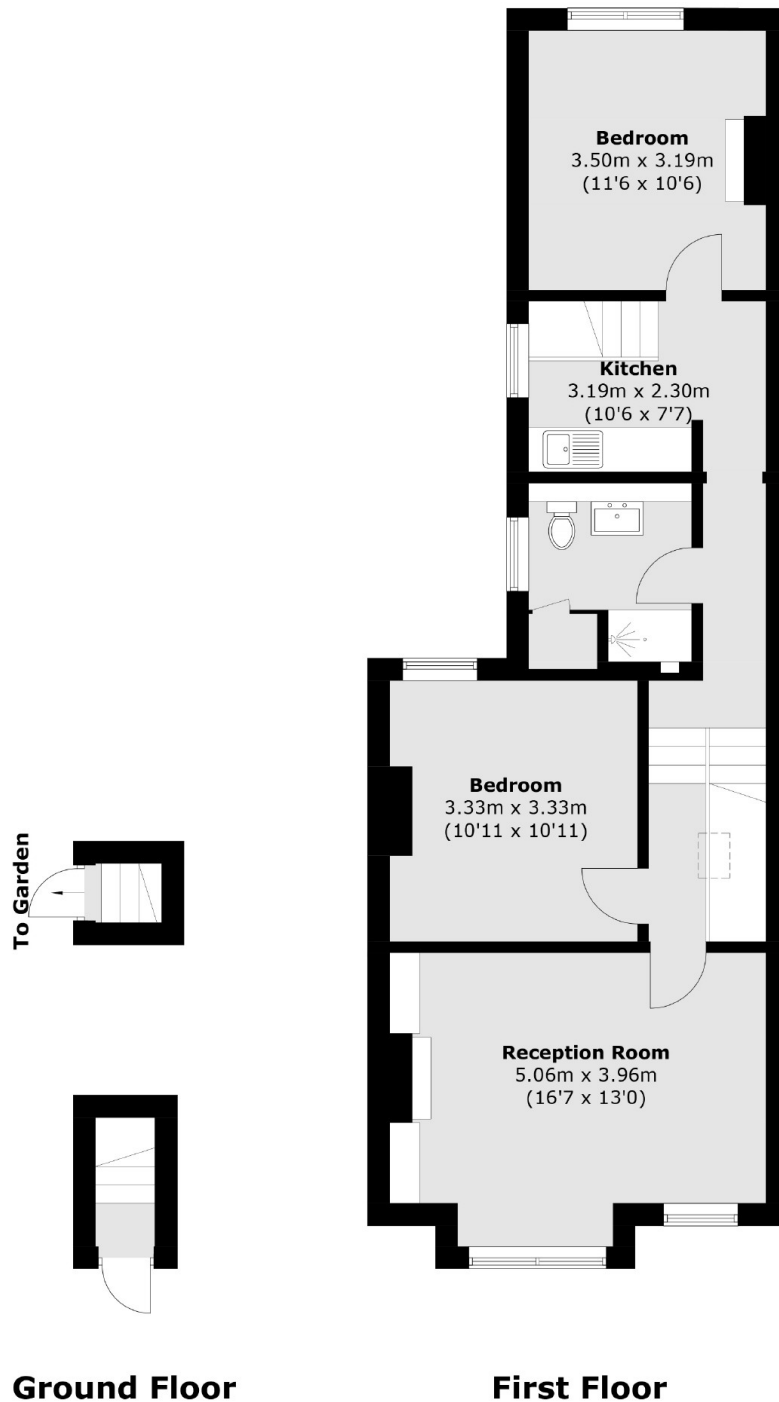


Crebor Street, SE22

The heart of the home is the bright and spacious reception room, flooded with natural light through large sash windows. With generous proportions to accommodate both living and dining areas, this room is further enhanced by a character fireplace. The property boasts two generously sized double bedrooms and a stylish modern bathroom. The well-appointed kitchen offers storage and worktop space, along with a unique hatch and staircase leading directly down to the garden where you can then access your private section.



Crebor Street, London, SE22



Total area (approx.): 67.1 sq. m (722.2 sq. ft)

Dexters

East Dulwich
98 Grove Vale
London
SE22 8DR
Sales
020 8742 4142

Energy Rating: E. We aim to make our particulars both accurate and reliable. However they are not guaranteed; nor do they form part of an offer or contract. If you require clarification on any points then please contact us, especially if you're traveling some distance to view. Please note that appliances and heating systems have not been tested and therefore no warranties can be given as to their good working order.

 **RICS** | Regulated
Estate Agent
and Letting Agent

[dexters.co.uk](https://www.dexters.co.uk)