



## Panmure Road, SE26

### £350,000

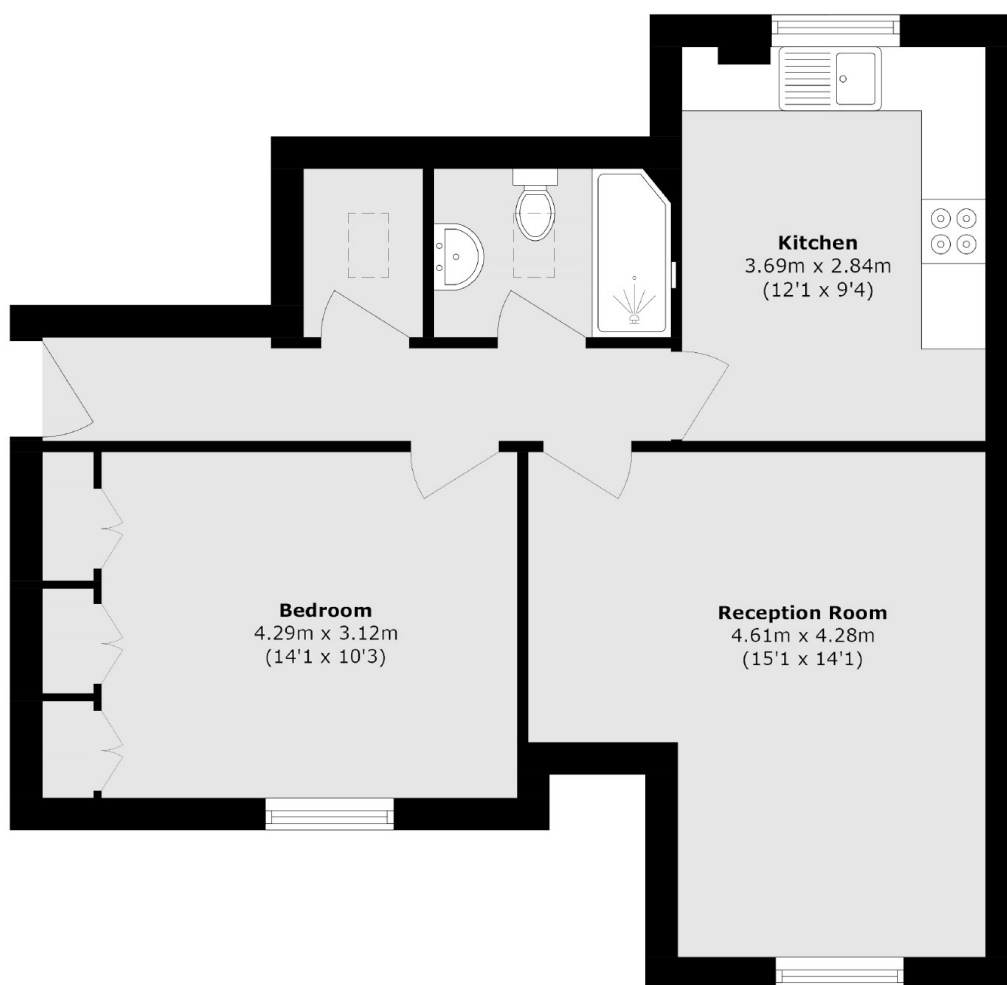
A spacious one bedroom flat situated on the top floor of a beautiful Victorian building in a peaceful cul de sac on Panmure Road in Upper Sydenham. The flat is in great condition with a modern contemporary style throughout as well as boasting a large communal garden space to enjoy.

An excellent location for it's choice of green spaces to enjoy, highlights including Crystal Palace Park, Dulwich Park and Mayow Park. You have the benefit of being able to use Sydenham & Forest Hill Stations with fast access into London Bridge. There are an abundance of amenities to enjoy nearby with local coffee shops, eateries and bars being found on Kirkdale as well as Forest Hill High Street.

### Features

- Victorian Conversion
- Top Floor
- Communal Garden
- Cul De Sac
- 589 Square Foot
- Excellent Location

# Panmure Road, London, SE26



Total area (approx.): 54.8 sq. m (589.8 sq. ft)